

# EFPM Series: *IP65 Flush Mount LCD Monitor*

IP65 Flush Mount 12.1" LCD monitor, 1024 x 768, LED 1000 nits, VGA input, WT(-30°C~70°C) with Projective Capacitive Touch (1-2mm) USB Controller

**Model: EFPM1210XHBWT-PCT**



## FEATURES HIGHLIGHTS:

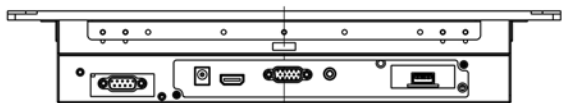
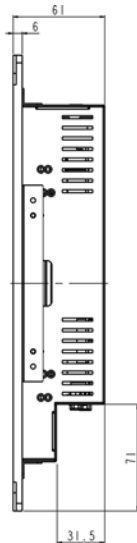
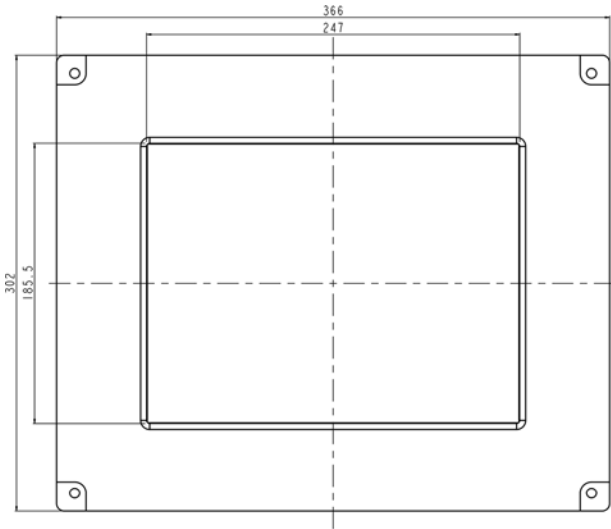
- Modularize mechanical design provides flexible product configuration and easy maintenance
- Optional build-in touch screen for interactive application
- Available with auto-brightness sensor offers application in day and night
- VGA connector with optional AV.SV.AV-Looping
- Complete custom design/solution for OEM customers

## SPECIFICATIONS:

|                            |  |  |   |
|----------------------------|--|--|---|
| <b>Panel</b>               | Cell Type / Glass Surface  | TFT LCD / Black Anti-Glare, low reflection coating         |   |
|                            | Aspect Ratio / Size  | 4 : 3 / 12.1" viewable diagonal area                       |   |
|                            | Active Area / Pixel Pitch  | 245.8(H) x 184.3(V) mm / 0.24(H) x 0.24(V) mm              |   |
|                            | Native Resolution / Colors   | 1024(H) x 768(V) / 16.2 M                                  |   |
|                            | Brightness / Contrast  | 1000 cd/m <sup>2</sup> (typ) / 700 : 1                     |   |
|                            | Response Time  | < 25 ms  |   |
|                            | Viewing Angle (typical)  | H. 160o (- 80o ~ + 80o) , V. 140o(- 70o ~ + 70o)           |   |
|                            | Light Source   | LED backlight, Long life, 35,000 hrs (typ)                 |   |
| <b>Input Sources</b>       | PC System  | Signal   | Analog RGB (0.7/1.0 V <sub>p-p</sub> , 75 ohms)         |
|                            |  | Sync   | Separate Sync, Composite Sync, Sync On Green            |
|                            |  | Frequency  | F <sub>h</sub> : 30 - 82Khz , F <sub>v</sub> : 50 -75Hz |
| Audio System               | 2W speaker x 2   |  |   |
| <b>Input Terminals</b>     | 1 x VGA (15 Pin Female D-Sub) , 1 x PC Audio (Stereo Headphone Jack) , 1 x DC Power Plug |  |   |
| <b>Convenient Features</b> | Auto Calibration , Back Light Adjustment , Plug&Play (VESA DDC/CI, DDC 2B)               |  |   |
|                            | OSD Multi-Languages , Wall Mount Ready (VESA Dimension - please refer to Drawing)        |  |   |
| <b>Power</b>               | 12V DC in  |  |   |
| <b>Power Consumption</b>   | Operation / Power Saving   | 24 watt , < 2 watt (Support DPMS)                          |   |
| <b>Operating Condition</b> | Temperature / Humidity   | -30°C ~ 70°C (-22°F ~ 158°F) , 10% ~ 90% (no condensation) |   |
| <b>Storage Condition</b>   | Temperature / Humidity   | -30°C ~ 80°C (-22°F ~ 176°F) , 10% ~ 90% (no condensation) |   |
| <b>Certification</b>       | FCC , CE   |  |   |
| <b>Dimensions</b>          | Physical   | Please refer to Drawing                                    |   |
|                            | Carton   | W x H x D = TBD  |   |
| <b>Weight</b>              | N.W. / G.W.  | 3.5 Kgs / 4.5 Kgs  |   |
| <b>Container Loaded</b>    | 20ft / 40ft / 40ft HQ  | TBD (Sets , By pallet)                                     |   |

| <b>Options</b> | Touch            | Video / TV           | Enhanced Panel           | Others                       |
|----------------|------------------|----------------------|--------------------------|------------------------------|
|                | Resistive touch  | SV + AV              | Panel with LED backlight | Digital Signage(Stand alone) |
|                | Capacitive touch | SV + AV + AV_Looping | High brightness panel    | Networking Digital Signage   |
|                | SAW touch        | SV + AV + TV         | Wide Temperature         | Motion Sensor                |
|                | Infrared touch   |                      | Sunlight Readable        | Light Sensor                 |
|                | Protected glass  |                      |                          | Auto-Dimming                 |

**MECHANICAL DRAWING:**



TOP VIEW

