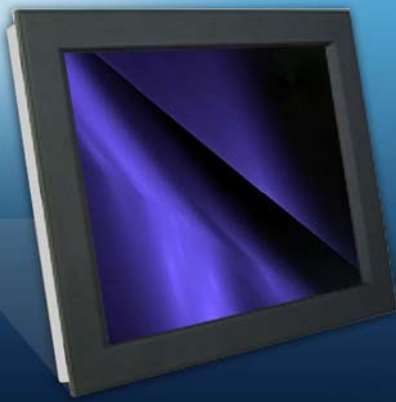


12.1" Front Aluminum LCD Panel

Model: iAP-1200



Display Benefits

- 12.1" LCD with resolution 800 x 600
- Green LED-backlit panel technology
- Rugged construction against external impact
- Protective 3mm glass

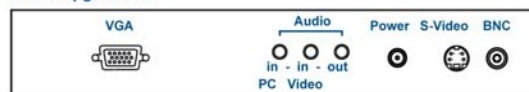
Options

- S-Video + BNC & Audio
- 12.1" Touchscreen : Capacitive, Resistive
- 48V, 24V or 12VDC power
- TV - Analog

Standard I/O



AD2.2 upgrade I/O



Specifications:

LCD Panel	
Size (diagonal) :	12.1" TFT
Max resolution :	800 x 600
Brightness (cd/m2) :	450
Backlight :	LED
Colors :	262 K
Contrast ratio (typ) :	700 : 1
Viewing angle (H/V) :	160° x 140°
Active area (mm) :	246 x 185
MTBF (hrs) :	50,000
Signal input :	VGA
Weight	
Net / Gross :	3 kgs (6.6 lbs) / 5 kgs (11 lbs)
Mounting :	
	Panel mount / VESA mount

Environmental	
Operating :	0 to 50°C Degree
Storage :	-5 to 60°C Degree
Relative humidity :	5-90%, non-condensing
Shock :	10G acceleration (11 ms duration)
Vibration :	5-500Hz 1G RMS random vibration
Casing Color :	
	Black front panel (RAL 9005) Dark grey rear case (RAL 7037)
Regulatory :	
	FCC, CE
Power	
Input :	Auto-sensing 100 to 240VAC, 50 / 60Hz
Consumption :	Max. 40 Watt, Standby 5 Watt
Dimensions	
Product :	345 x 68 x 256 mm / 13.6 x 2.7 x 10.1 inch
Packing :	515 x 117 x 429 mm / 20.3 x 4.6 x 16.9 inch

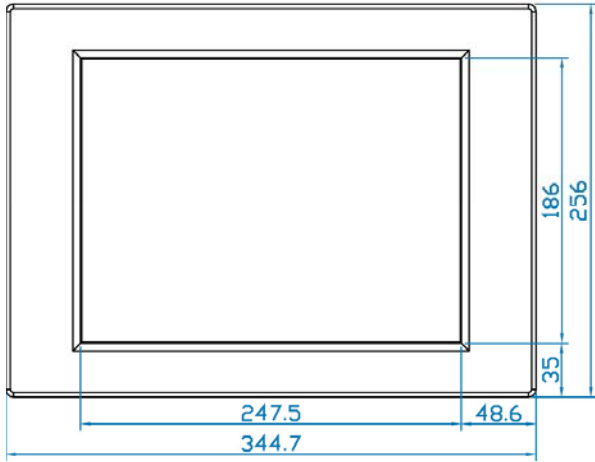
Model: iAP1200



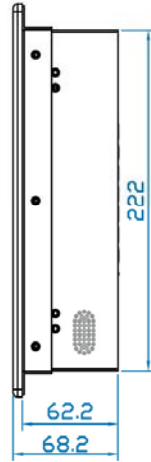
Mechanical Drawing

Diagrams (mm)

Front View



Side View



Rear View

