

CHASSIS LCD DISPLAY



Chassis LCD display Wide 12.3"-1920x720
LED-450nits VGA+HDMI signal input ports AC/DC External
power adapter with 110/220VAC auto-switching

MODEL: ECHWS1230

ECHS Series: Industrial Chassis Wall/Surface Mount Metal Housing LCD Monitor
(Optional Integrated Touch Screen/PC/ DC Input/Front NEMA4x/Front Stainless steel bezel and more...)

FEATURE HIGHLIGHTS



- Metal Chassis/Housing for higher Impact protection. (Optional for Front AR Glass or Vandal Resistant glass)
- Built-in speaker built-in speakers that allow the convenience Audio output.
- Side OSD buttons can prevent unnecessary setting changes.
- Above 24" LCD will include Front IR Sensor and Remote controller.
- Auto Video Signal ON / OFF
- Auto Always Power On



- Ultra low speed/Noise fan for extra cooling (24" LCD or above)
- VESA Mounting Hole Pattern
- Reliable built-in Power supply for 15" or above (Optional for 9-36V DC input)



- Standard VGA Input (Optional for DVI, HDMI, AV, BNC, AV looping and SDI)
- Optional for RS232 Remote Control Protocol: Command Code to set system

FEATURES

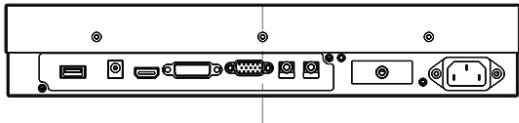
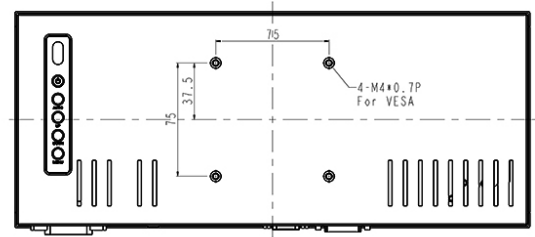
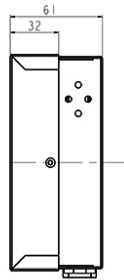
- Modular mechanism design provides flexible product configuration and easy maintenance.
- Optional with auto-brightness sensor offers application in day and night
- Optional to built-in PC eliminates external box

SPECIFICATION

Panel	Cell Type / Glass Surface	TFT LCD / Black Anti-Glare, low reflection coating	
	Size	12.3" viewable diagonal area	
	Active Area / Pixel Pitch	292.32(H)×109.62(V) mm / 0.05075(H)×RGBx0.15225(V) mm	
	Native Resolution / Colors	1920(H) x 720(V) / 16.7 Million	
	Brightness / Contrast	450 cd/m ² (typ) / 1000 : 1	
	Response Time	≤ 12 ms	
	Viewing Angle (typical)	H. 160o (- 80o ~ + 80o) , V. 160o(- 80o ~ + 80o)	
	Light Source	LED, Long life, 35,000 hrs (typ)	
Input Sources	PC System	Signal	Analog RGB (0.7/1.0 V _{p-p} , 75 ohms)
		Sync	Separate Sync, Composite Sync, Sync On Green
		Frequency	F _H : 30 - 82Khz , F _V : 50 -75Hz
	Audio System	3W speaker x 2	
Input Terminals	1 x VGA (15 Pin Female D-S ub) , 1 x HDMI, 1 x PC Audio (Stereo Headphone Jack) , 1 x DC Power		
Convenient Features	Auto Calibration , Back Light Adjustment , Plug&Play (VESA DDC/CI, DDC 2B)		
	OSD Multi-Languages , Wall Mount Ready (VESA 75 x 75 mm)		
Power	AC/DC External power adapter with 110/220VAC auto-switching		
Power Consumption	Operation / Power Saving	20 watt , < 2 watt (Support DPMS)	
Operating Condition	Temperature / Humidity	0°C ~ 50°C (32°F ~ 122°F) , 10% ~ 90% (no condensation)	
Storage Condition	Temperature / Humidity	- 20°C ~ 60°C (- 4°F ~ 140°F) , 10% ~ 90% (no condensation)	
Certification	FCC , CE		
Dimensions	Physical	With Base(W x H x D) : TBD	
		Without Base(W x H x D) : TBD	
	Carton	W x H x D = TBD	
Weight	N.W. / G.W.	TBD	

Options	Video / TV	Others
	SV + AV	Digital Signage (Stand alone)
	SV + AV + AV Looping	Networking Digital Signage
	SV + AV + TV	Motion Sensor
		Light Sensor
		Auto-Dimming

MECHANICAL DRAWINGS



LCD OPTIONS



LED Backlight Options

Introducing LED backlight options for monitors for energy efficiency and a brighter screen.



VIDEO Input Options:

For Video inputs options:

DVI, DVI+HDMI, SVideo+AV, SVideo+AV+DVI, AV+Looping, DVI+AV+Looping, HD-SDI, BNC (PAL/NTSC)



Optical Bonding Options

- Optical Bonding provides the best reduction of ambient light washout of any commercially available enhancement technology.
- Optical Bonding has a lower cost than most other competing technologies.
- Optical Bonding offers superior ruggedization, enhancing the display durability under vibration, shock and other environmental extremes.



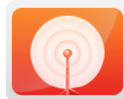
RS-232 Remote Control Options

Remote Control Protocol: Command Code to set system



9-36V DC Input Options

iTech offers a selection of DC input from 9V to 36V



Light Sensor and Motion Sensor Options

iTech LCD offers Light and Motion Sensor

Privacy Filter

Front Glass Options:

- Anti Reflective AR Glass 3mm
- Anti Reflective AR Glass 6mm Vandal-Resistance
- Anti Reflective AR Glass 8mm Vandal-Resistance
- Anti Glare AG Glass 3mm