

Secure Power Management & Control

Manage, Monitor, Report, & Control Power on Network Equipment

Power Control & Management:

- Remote Individual Outlet Switching
- On/Off/Reboot/Default Switching
- Timed On/Off/Reboot Switching
- User-Defined Power-Up Default Status and Sequencing
- Alarm, User Audit, Current, Voltage and Temperature Logging
- Plug Naming & Grouping
- Command Logging with Audit Trail

Current/Voltage/Temperature Monitoring:

- True RMS Current Monitoring
- Display via Local or Remote LED, Web Interface, SNMP, Command Line
- Threshold Alarms for Advanced Circuit Breaker Protection
- Graphing of Current/Voltage/Temperature Live, Weekly, Monthly, Yearly Readings
- Ping-No-Answer Monitoring/Reboot
- Alarm Notification via Email, SNMP, SYSLOG

Access/Security:

- Full MIB Support
- SNMP(V1, V2, V3)
- SSL Web Browser
- SSHv2 Encryption
- LDAP, Kerberos, RADIUS, TACACS
- 10/100 BaseT Ethernet Port
- (3) Aux Ports – Control up to 80 outlets via one IP Address

Power Distribution:

- Circuit Breaker Protection
- Dual Inputs for High Density Applications
- Various Input Cable Styles – Order Separately
- Cable Retainers
- Horizontal & Vertical Zero-U Models



Model MPC-8H-1



Model MPC-16H-1



Model MPC-20V-1

- ✓ 5 Year Warranty
- ✓ Stocked for Same Day Shipments
- ✓ In-House Design & Manufacturing
- ✓ Free Online Demos
- ✓ Made In USA



Model MPC-20V-2



Model MPC-8H-2



Model MPC-16H-2



MPC Series: Managed Power Controllers

Specifications:

Model Number	MPC-8H-1	MPC-8H-2	MPC-16H-1	MPC-16H-2	MPC-20V-1	MPC-20V-2	MPC-Remote
Controlled Outlets	8	8	16	16	20	20	
Outlet Type	NEMA 5-20R	IEC320 C13	NEMA 5-20R	IEC320 C13	NEMA 5-20R	IEC320 C13	
Power Inlets	(2 ea.) IEC-C20	(2 ea.) IEC-C20	(2 ea.) IEC-C20	(2 ea.) IEC-C20	(2 ea.) IEC-C20	(2 ea.) IEC-C20	RJ-45 Powered
Input Feeds	20A (2 ea.)	16A (2 ea.)	20A (2 ea.)	16A (2 ea.)	20A (2 ea.)	16A (2 ea.)	
Input Voltage 50/60 Hz	120 VAC	208/240 VAC	120 VAC	208/240 VAC	120 VAC	208/240 VAC	0.5 Watts
Rack Space	1U	1U	2U	2U	Zero-U	Zero-U	1U
Dimensions	W: 19" (48.3 cm) D: 8.7" (22.1 cm) H: 1.75" (4.5 cm)		W: 19" (48.3 cm) D: 8.7" (22.1 cm) H: 3.5" (8.9 cm)		W: 4.5" (11.4 cm) D: 3.0" (7.6 cm) H: 31" (78.7 cm)		W: 19.0" (48.3 cm) D: 1.125" (2.9 cm) H: 1.75" (4.5 cm)
Operating Temp.	32°F - 122°F (0°C - 50°C)						
Humidity	10-90% RH						

Control Ports:

Ethernet: 10/100 BaseT

Console: DB9M, RS232C

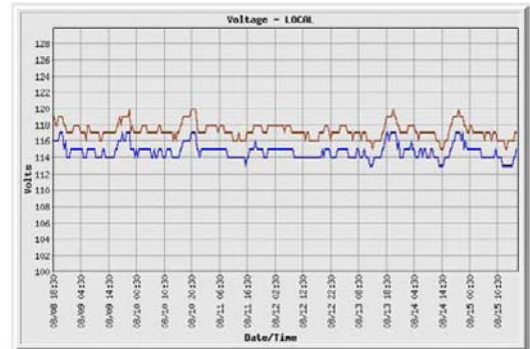
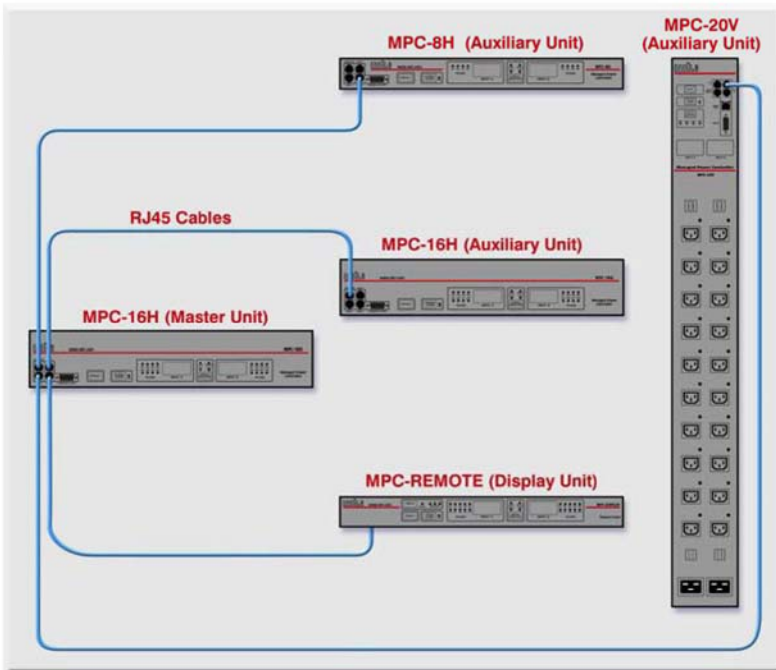
Aux/Link: (3) RJ-45, RS232C

Remote Display: (1) RJ-45, RS232C

Approvals: FCC, UL, CE (208/240 VAC Units)



Model MPC-REMOTE: Via RJ-45, remotely display plug status, amps, volts, watts & temperature of up to (4) MPC units when mounted in hard to reach areas.



Status Displays: Current, Voltage, and Temperature History Graphs



Application Example, with Master Unit, Auxiliary Units and MPC-REMOTE Display Unit



Distributed by

i-Tech Company LLC

TOLL FREE: (888) 483-2418 • EMAIL: info@i-techcompany.com • WEB: www.i-techcompany.com

© Copyright 2007 Western Telematic, Incorporated. NetReach is a trademark of Western Telematic, Incorporated