

### Expandable Web Browser Based Power Control

Control Power on Any AC Powered Device . . .  
Via Web Browser, Telnet,  
Modem or Local Terminal!



#### Applications:

Remote Power Management and Control

Reboot Servers, Routers, Web Cams  
Firewalls and Other Remote Devices

#### Features:

Web Browser Access for Easy Setup and Operation

Encrypted Password Security

Expandable to Five (5) Individual Outlets

Each Outlet can Switch a 15 Amp Load

On / Off / Reboot Switching

IP Addressed, 10 Base-T Interface

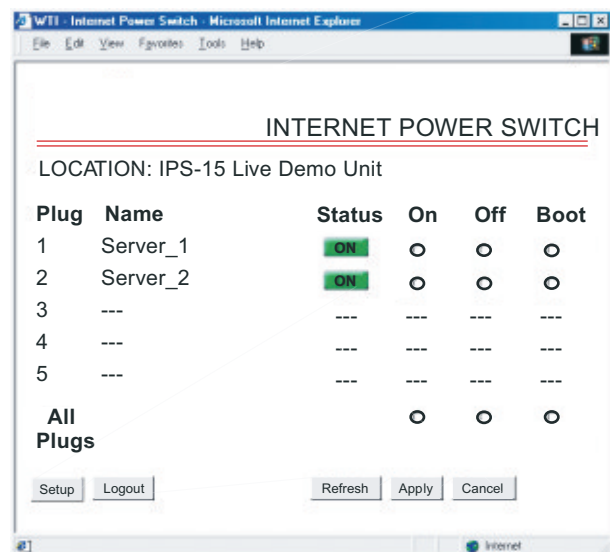
RS232 Modem / Console Port

Network Security Features

Manual Power Control Button

Servers, routers, and other electronic equipment sometimes “lock-up,” often requiring a service call to a remote site just to flip the power switch to perform a simple reboot. The IPS-15 Internet Power Switch gives you the ability to perform this function from anywhere, just point your browser to the IPS-15’s IP address, enter the secure password, and you’re just a click away from remote power control.

#### Web Browser Interface



# IPS-15 Internet Power Switch

## Two Convenient User Interfaces

The IPS-15 provides two convenient methods for accessing configuration and switching functions; The Web Browser Interface and the Command Line Interface. The Web Browser Interface consists of a series of simple, easy-to-use web page menus that allow you to select configuration parameters or initiate switching operations using your TCP/IP network and a Java Script enabled web browser. The Command Line Interface is an ASCII command line menu system, which allows you to configure and operate the IPS-15 via Telnet over TCP/IP network, via modem connection or via local PC using a terminal program such as Hyperterminal or TeraTerm.

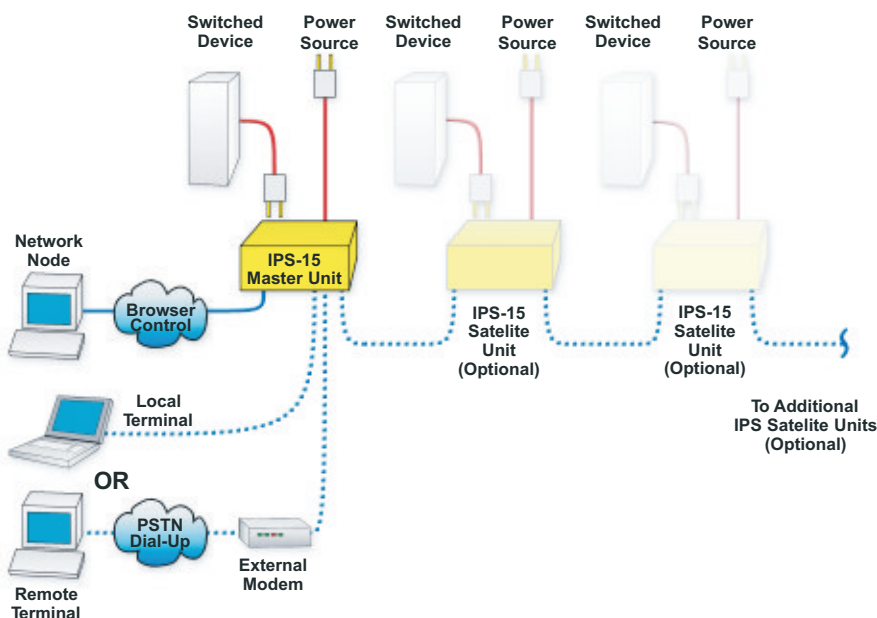
## Expandable, Flexible Design

The IPS-15 Master Unit can be linked to four optional, low cost satellite units for a total of five individually controlled outlets. This allows the IPS-15 to easily grow to fit the requirements of your power control application. Flexible mounting options are also available. A Zero U rack bracket lets you mount the IPS on the outside of a standard 19 inch rack rail. A 1U rack tray allows mounting one main unit and two satellite units in a 19 inch rack.

## Security Features

Access to the IPS-15 command mode is password protected to prevent unauthorized users from gaining access to sensitive switching and configuration functions. Both the Web Browser Interface and Command Line Interface require the user to enter a password before allowing access. Passwords transmitted via web browser, use basic 64 bit encryption techniques to ensure that passwords remain protected, and access to your equipment remains secure. Telnet Control can be defined to a discrete TCP port, or turned off to ensure that no unprotected port is present.

The IPS-15 also features two different levels of operational passwords; the System Administrator Level and the User Level. The System Level provides access to all configuration and switching functions, while the User Level is limited to switching functions only.



## Specifications

### Power Input/Output: IPS-15 (115VAC)

**AC Inputs:** 15 Amps Max

**Voltage:** 105 - 120 VAC, 60 Hz

**Connectors:** IEC-320 Inlet, Line Cord Supplied

**AC Outputs:** One (1), Expandable to Five

**Connector:** NEMA 5-15 Outlet

**Load:** 15 Amps Total

### Console / Modem Port Interface:

**Connector:** DB9M, RS232C, DTE  
(9-to-9 Pin null Cable Provided)

**Coding:** Serial ASCII, 8 Bits, No Parity

### Physical / Environmental:

#### Size:

**Height:** 1.75" (4.5 cm)

**Depth:** 7.00" (17.8 cm)

**Width:** (Master Unit): 5.80" (14.7 cm)

**Width:** (Satellite Unit): 4.60" (11.7 cm)

**Weight:** 4 Lbs. Shipping Weight

**Operation Temperature:** 32°F to 122°F  
(0°C to 50°C)

**Humidity:** 10 - 90% RH

### Ordering Information:

**IPS-15M:** Master Control Unit,  
115VAC @ 15 Amps

**IPS-15S:** Satellite Unit, 115 VAC  
@ 15 Amps

**IPS-15R:** 19" Rack Mount Tray, 1 RU  
(Mounts Master and Two Satellite Units)

**IPS-15ZU:** Bracket for Zero U Mounting



**I-TECH  
COMPANY**  
[www.i-techcompany.com](http://www.i-techcompany.com)  
**Toll Free: 1-888-483-2418**  
**USA: 1-510-429-9288**  
**Fax: 1-510-372-2736**