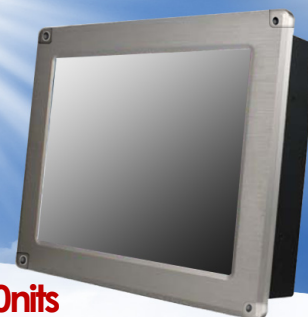


SUNLIGHT READABLE HIGH BRIGHTNESS

IP65 Front Flush Mount (Aluminum-6mm)

7" Wide Aluminum 6mm Flush mount -30 to 65C, 800x480, 1500nits LED
VGA + DVI + HDMI input, Rear OSD, 110/220V AC external adapter
with 4Wires Res. Touch (USB)

1500nits



Model: YFMW0700PHB2WT-TR

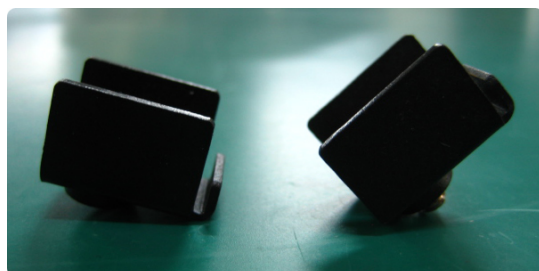
FEATURES:

- . High contrast color TFT-LCD Monitor support resolution up to 800*480.
- . Power management system conforms to VESA DPMS and EPA Energy Star standards.
- . Full consideration for touch screen installation and application.
- . Universal Power adapter.
- . Support DDC1 & DDC2B for Plug & Play compatibility.
- . Advanced OSD control for picture quality adjustment.
- . Detachable stand for wall-mounting adjustment.
- . Heavy duty monitor with steel frame.
- . Custom design by request.

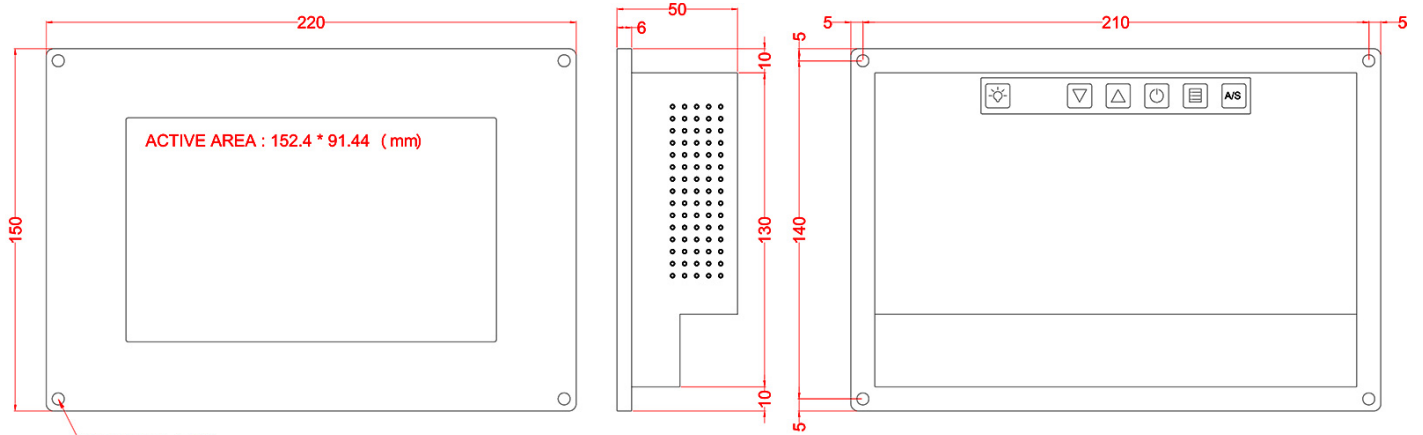
System Specifications:

Panel Type	7-inch TFT LCD
Screen Diagonal	7-inch
Active Display Area (mm)	152 (H) x 91 (V)
Pixel Pitch (mm)	0.1905 x 0.1905
Number of Pixels	800 * 480
Contrast Ratio	400:1
Color Arrangement	R.G.B. Vertical Stripe
Brightness (cd/m ²)	1500 cd/m ²
Viewing Angle(Typ.)	65/65/70/70 (R/L/U/D)
Signal Connector	VGA + DVI + HDMI
Power Source	AC110 ~ 220V, Universal +/- 10%
Power Management	VESA DPMS Compliant
Operating Temperature	-30 ~ 85°C
Storage Temperature	-30 ~ 80°C
Plug & Play	VESA DDC 1/2B

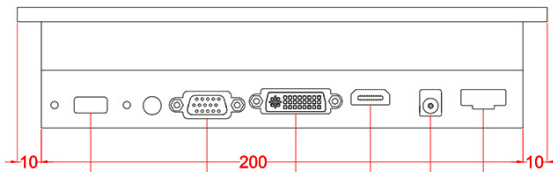
Clamp Mount



Mechanical Drawing:



USER HOLE (Ø5 *4)



TOUCH SCREEN
VGA SIGNAL INPUT
DVI SIGNAL INPUT

DC 9-36V POWER INPUT (TERMINAL BLOCK)
DC 12V POWER INPUT (DC JACK)
HDMI SIGNAL INPUT

Note :

- (1) Unit : mm °
- (2) Unspecified tolerances are +/- 0.5mm.