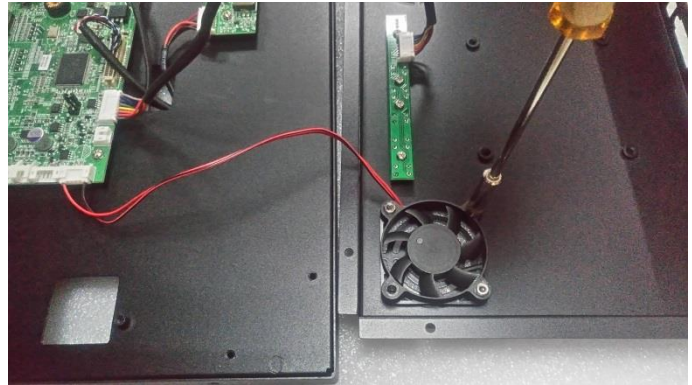


The SOP to Replace Fan

Step1.

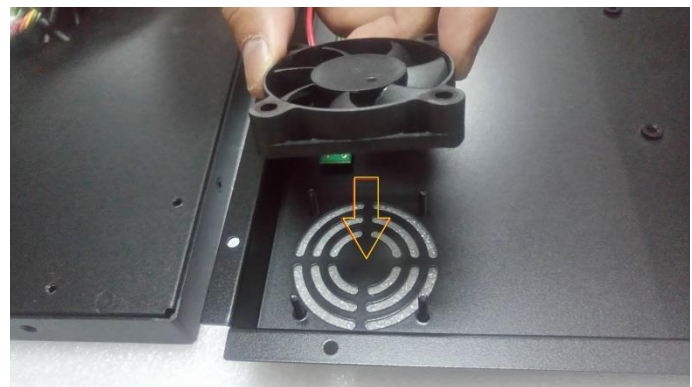
Prepare screw driver to do following steps.

Please remove M3 nuts,
M3x15 screws and broken fan.



Step2.

Put screws and new fan onto its position.
Screw the M3 nuts tightly.



Step3

Connect cable of new fan to A/D board.

Note the connect position.



(Finish all the steps.)