

# Metal Housing High Brightness LCD

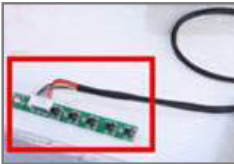


Industrial Open Frame Metal Housing High Brightness 20.1" Open frame / 1600x1200 / 500nits / VGA+DVI+HDMI / Hot key control brightness / DC 9-36V input / External OSD  
DAY003-HDMI AD board support SXGA 1280x1024

**Model: YOP2000HBV1**

## FEATURES:

- Sunlight Readable.
- LED Backlight.
- 20.1" SXGA TFT LCD with resolution up to 1600 x 1200
- Suitable computer and Office equipment, Communications equipment, Test and Measurement equipment, Machine tools, Industrial robots, Audio and Visual equipment.
- **External OSD**

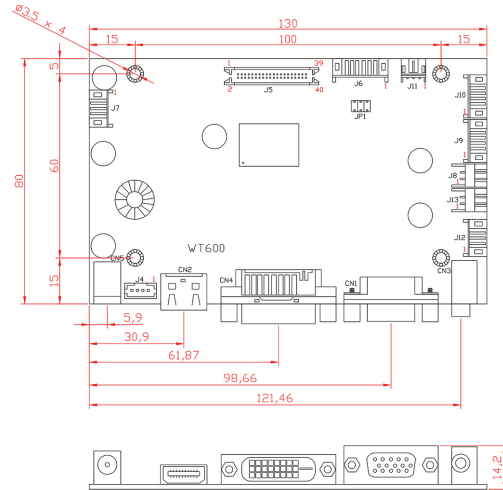
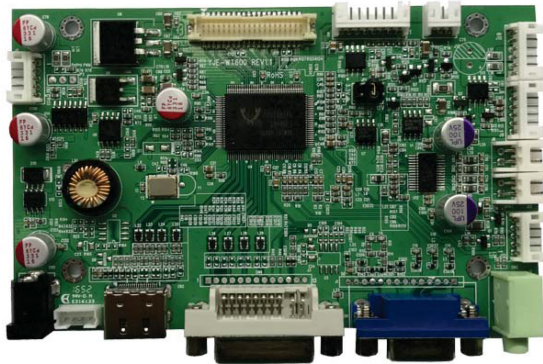


## SYSTEM SPECIFICATIONS

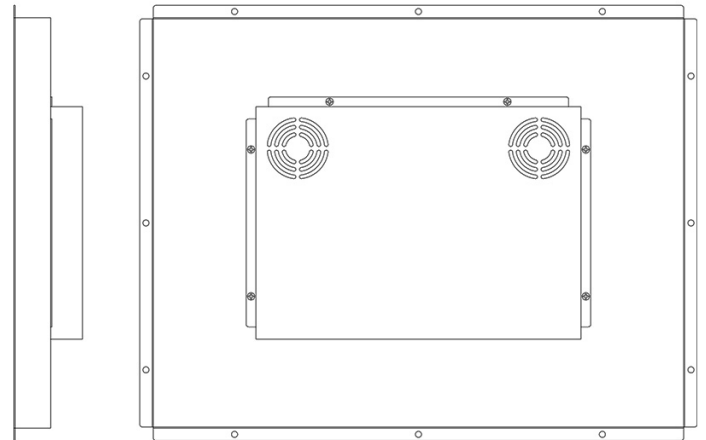
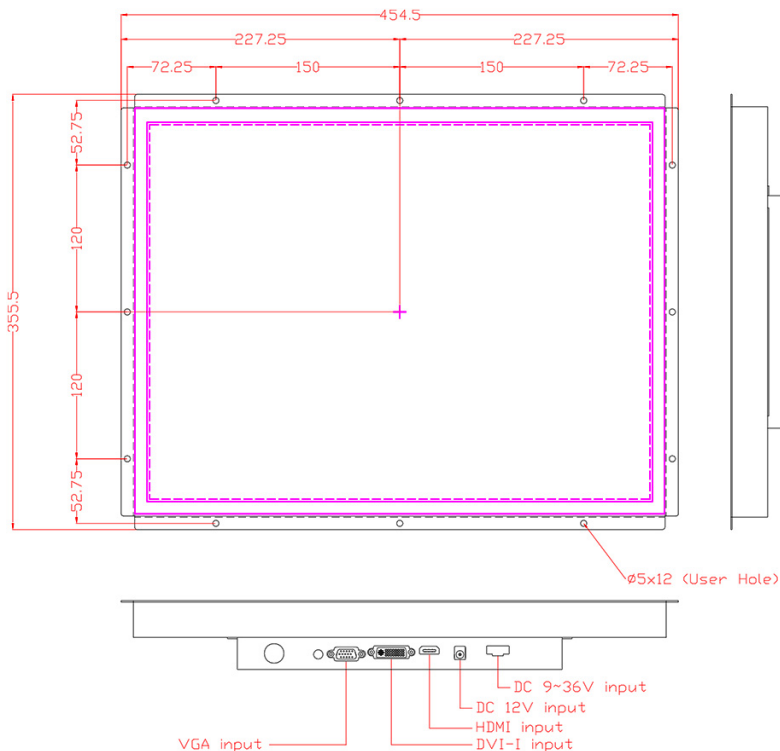
Panel Type	20.1-inch TFT LCD
Screen Diagonal	20.1-inch
Active Display Area (mm)	408.0 (H) x 306.0 (V)
Pixel Pitch (mm)	0.255 x 0.255
Number of Pixels	1600 * 1200
Contrast Ratio	800:1
Display Color	16.7M (8-bit)
Brightness	500nits
Viewing Angle(Typ.)	89 / 89 / 89 / 89 ( R/L/U/D)
Video Input	VGA+DVI+HDMI
Power Source	DC 9-36V input
Power Management	VESA DPMS Compliant
Operating Temperature	0 ~ 50°C
Storage Temperature	-20 ~ 60°C
Plug & Play	VESA DDC 1/2B

## DAY003-HDMI AD Board

- Optional input combination, e.g., TV with PC Monitor.
- Optional input 8-bit LVDS.
- Inverter can supply PWM or Digital Brightness control.
- Small form factor: 130x80 mm.
- Full CRT multi-sync monitor compatibility.
- Multi-sync capability , compatible standard DOS,VGA, SVGA, XGA, SXGA,
- WSXGA, WSXGA+, UXGA and WUXGA VESA timing.
- True color (16.7M) data processing and display driving.
- Single control operated On-Screen-Display(hereafter“OSD”)user interface.
- Multi language support (2 Language).
- Full control of all relevant display and interface parameter via OSD.
- VESA DDC 1/2B compliant.
- Compatible with VESA DPMS power saving modes.
- Multi-standard color (PAL/Secam/NTSC).



## MECHANICAL DRAWINGS:



Note :  
 (1) Unit : mm •  
 (2) Unspecified tolerances are ±0.5mm.