

# Industrial Keyboard

NEMA4X, Small Footprint Rackdrawer

Model: YK9700e



The YK9700E is an extremely small-footprint rackdrawer with an ergonomic 10-degree pullout drawer with magnetic lock. This rack drawer is ideal for use in harsh environments and its very shallow depth allows for storage behind the unit for crucial components such as a power source. The YK9700E-SK-97 comes standard with an SK-97-TP keyboard. Sealed to NEMA 4X specifications, the keyboard includes an integrated touchpad, 10-key numeric pad and rugged ABS polycarbonate case.

## FEATURES:

- Magnetic Locking Draw
- Ultra-Small Footprint Design
- Shallow Dept

## SPECIFICATIONS:

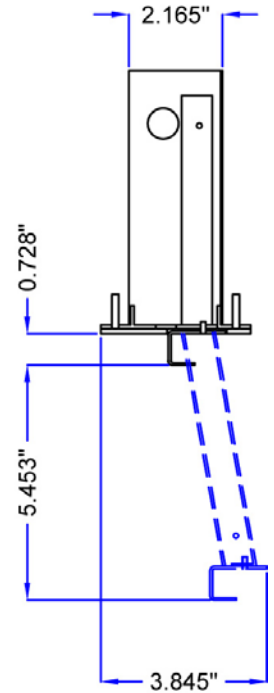
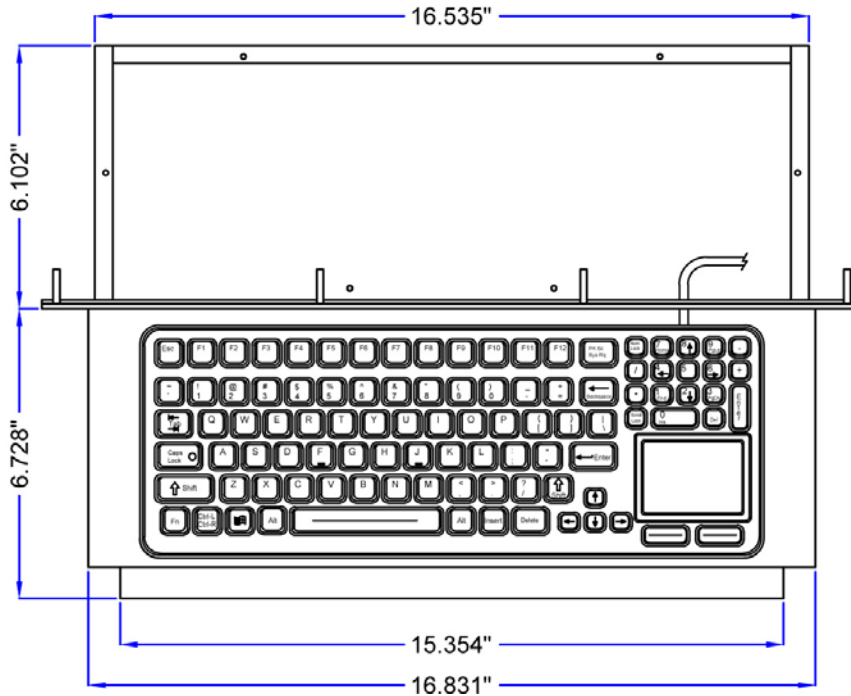
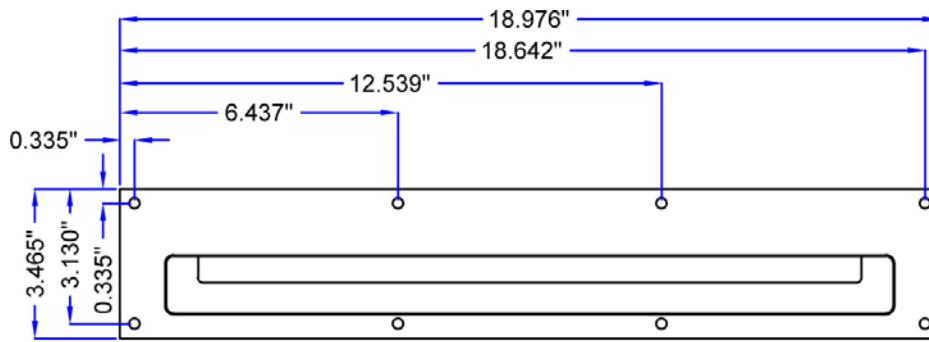
<b>Shock</b>	3 x 11 ms pulses of 50g on each of 3 axes
<b>Cable</b>	PS/2 and USB
<b>Key Switch</b>	Material: LIFE: Greater Than 10 Million Cycles TRAVEL: 0.55in. ACTUATION FORCE: 7.05 oz +/- 1.06 oz (200g +/- 30g) FEEDBACK: Tactile with Mechanical Snap
<b>Vibration</b>	POWER SPECTRAL DENSITY: 0.04g/Hz FREQUENCY RANGE: 20Hz - 2 kHz DURATION OF TEST PER AXIS: 3 hours
<b>Power</b>	PS2: KEYBOARD: 50mA@5V (from Keyboard port) TOUCHPAD: 10mA@5V (from Mouse port) USB: 60mA@5V (from CPU port)
<b>Temperature Range</b>	STORAGE: -40F to +194F (-40C to +90C) OPERATING: -40F to +158F (-40C to +70C)
<b>Weight</b>	10.00 lbs +/- 0.10lbs (4.53 kg +/- 0.05kg)
<b>Dimensions</b>	6.83" x 18.976" x 3.465"
<b>Pointing Device</b>	Touchpad



i-Tech Company LLC

TOLL FREE: (888) 483-2418 • EMAIL: [info@iTechLCD.com](mailto:info@iTechLCD.com) • WEB: [www.iTechLCD.com](http://www.iTechLCD.com)

## DRAWINGS:



### KEY SWITCH

MATERIAL:  
LIFE: Greater Than 10 Million Cycles  
TRAVEL: 0.55 in.  
ACTUATION FORCE: 7.05 oz. +/- 1.06 oz. (200g +/- 30g)  
FEEDBACK: Tactile with Mechanical Snap

### TEMPERATURE RANGE

STORAGE: -40°F to +194°F (-40°C to +90°C)  
OPERATING: -40°F to +158°F (-40°C to +70°C)

### VIBRATION

POWER SPECTRAL DENSITY: .04g/HZ  
FREQUENCY RANGE: 20Hz-2KHz  
DURATION OF TEST PER AXIS: 3 hours

### POWER

PS2: KEYBOARD: 50mA@5V (from Keyboard port)  
TOUCH PAD: 10mA@5V (from Mouse port)  
USB: 60mA@5V (from CPU port)

### HUMIDITY

100% Humidity Resistant

### SHOCK

3 X 11 ms pulses of 50g on each of 3 axes

### WEIGHT

10.00 lbs +/- 0.10 lbs ( 4.53 kg +/- 0.05 kg)