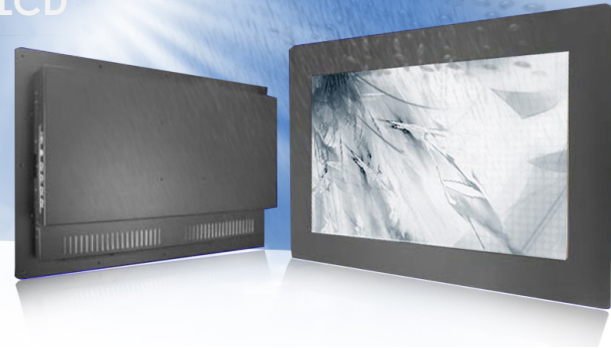


# SUNLIGHT READABLE PANEL MOUNT HIGH BRIGHTNESS LCD

## Industrial LCD Monitor with Aluminum Front Bezel

IP65 Front Panel Mount (Metal-5mm), 21.5" LCD monitor, 1920 x 1080  
1000 nits VGA Input, Side OSD, including rear screw/Clamp/VESA Mount  
with 5 Wire Resistive Touch Screen and USB Controller



## Model: YPMW2150IPHB-TR

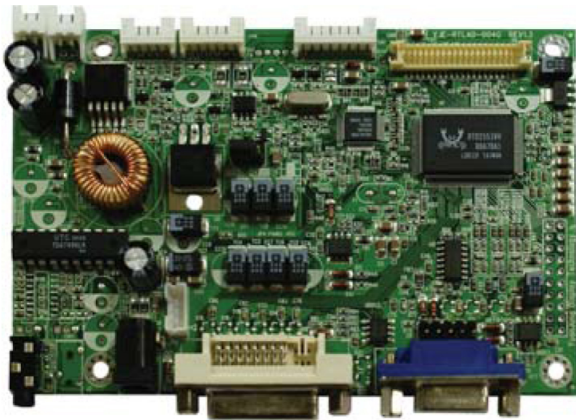
### FEATURES:

- Sunlight Readable.
- Color Active Matrix Liquid Crystal Display.
- FULL HD (1920 x 1080)
- Suitable for military, tablet, ruggedized PC, kiosk, advertising, POS, marine, transportation, gaming, gas pump.

### System Specifications

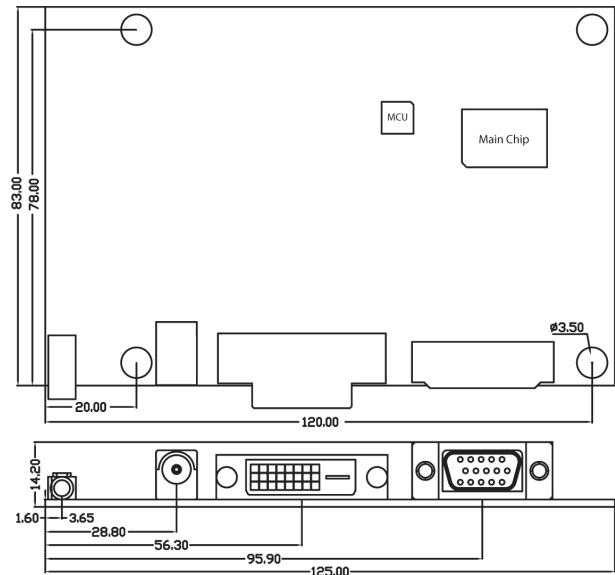
Active Area	476.64 (H) x 268.11 (V)
Pixels H x V	1920(x3) x 1080
Pixel Pitch	248.25 (per one triad) x 248.25
Pixel Arrangement	R.G.B. Vertical Stripe
Display Mode	TN Mode. Normally White
White Luminance	1000 (center, Typ) cd/m <sup>2</sup>
Contrast Ratio	1000 : 1 (Typ)
Optical Response Time	5 ms (typ. on/off) msec
Nominal Input Voltage VDD	+5.0 V Volt
Electrical Interface	Dual channel LVDS
Surface Treatment	Anti-Glare, 3H
Support Color	16.7M colors (RGB 6-bit data + HiFRC data)
Physical Size (H x V x D)	495.6 (H) x 292.2 (V) 16.35 (D) (Typ) mm
Temperature Range Operating Storage (Non-Operating)	0 to +50 °C
RoHS Compliance	RoHS Compliance

### AD-DB Board



- Small form factor 125 x 83mm.
- TTL/Dual LVDS interface.
- On-Screen Display control.
- Build-in YUV to RGB color space converter and de-interlace.
- Integrated 8-bit triple-channel 210MHz ADC/PLL.
- On chip brightness, contrast, and gamma correction.
- Auto adjustment for frequency, phase, H/V position and white balance.
- Embedded dual DDC can support DDC1, DDC2B.
- Flexible firmware to meet design for any custom request.
- Support various panel: VGA, SVGA, XGA, SXGA, WSXGA, WSXGA+, UXGA, WUXGA.

Unit : mm



# MECHANICAL DRAWINGS:

