



SINCE 2004

INNOVATIVELY

SMART
DISPLAY
SOLUTIONS



Version V.2 2023

www.itechlcd.com



TABLE OF CONTENTS

Global Supply And Service Networks	1
OUR Customers	2
Government Customers	3
Aerospace, Defense, Security Customers	4
Educational Customers	4
Corporate Customers	5
Military LCD	7
Portable Lunch Box All-in-One Computer	8
Medical Panel PC	9
Military Rackmount LCD Monitor KB KVM	10
Marine LCD and Marine Panel PC	11-12
Rackmount LCD	13
Rackmount LCD Keyboard Highlights	14
Outdoor LCD	15
IP66/IP67 Fully Sealed Touch Monitor AIO	16 - 18
Customized Touchscreen Solutions	19
Touchscreen Wide Open Frame LCD	20
High Brightness Outdoor LCD	21 - 23
Application	24 - 27
From Design To Manufacturing And Quality Control	28
Manufacturing And Quality Control	29
Testing And Quality Control	30

GLOBAL SUPPLY AND SERVICE NETWORKS



USA Headquarters & Factory



Factory & Service

OUR CUSTOMERS



GOVERNMENT CUSTOMERS

Air Force Research Laboratory
Air Force Weather Agency
American Embassy
Arizona US Court
Arnold Air Force Base
City of Lake Worth
Eglin Air Force Base
Georgia Department of Natural Resources
Kunsan Air Base
Lawrence Livermore National Laboratory
McGuire Air Force Base
General Atomics
Los Alamos National Laboratory
Naval Air Warfare Center
US Coast Guard
US Army
US Department of Agriculture
US Geological Survey
US Naval Research Laboratory
US Army Redstone Technical Test Center
US Army Institute of Surgical Research

Naval Inventory Control Point
US Navy
NSCW Corona Division
NAVSEA PHILADELPHIA
New York State Unified Court System
NASA/GSFC
Santa Clara City Library
Virginia Air National Guide
Vandenberg Air Force Base
174th Fighter Wing
Crane Divisions
Georgia Tech Research Institute
Sandia National Laboratories
Space Dynamics Laboratory

AEROSPACE, DEFENSE, SECURITY CUSTOMERS

Honeywell
Lockheed Martin
Raytheon
Northrop Grumman
Boeing
BAE
Saab Group
Airbus Defense and Space GmbH
Space X
SAIC
Leonardo DRS
Rohde & Schwarz

EDUCATIONAL CUSTOMERS

The University of Arizona
James Madison University
Johns Hopkins University
University of Illinois
Penn State University
Stanford Linear Accelerator Center
Arizona State University

University of Notre Dame
University of New Mexico
University of Missouri
University of Toledo
Yale University

CORPORATE CUSTOMERS

ASM France
ASM United Kingdom
ASM Germany
American Airlines
ANIXTER
APPRO International, Inc.
Ball Systems Engineering Solutions
CompServ, Inc.
Disney Hong Kong
Disney Land
Disney World and Cruise Ship
First Chatham Bank
Gap International, Inc.
Gateway
Genus, Inc.
Goodrich
Honeywell Technology Solutions
Kaiser
Pixelworks Inc.
Steel Dynamics
Time Warner Cable

ITECH OFFERS HIGH QUALITY PRODUCTS

MILITARY LCD

IP67 Rugged Monitor | Military Rack Mount LCD | Military Chassis Mount LCD | Military Rackmount KB | Military Panel Mount LCD



BMil21730-16e: 3U Military Grade Dual Slides Rugged Rackmount
17.3" LCD with 16 ports KVM

PORTABLE LUNCH BOX AIO COMPUTER



Triple Monitor – Model: BPCW31700HD-i7-V1



Dual Monitor – Model: BPCW21500BB



Single Monitor – Model: BPCW21500BB



MEDICAL PANEL PC



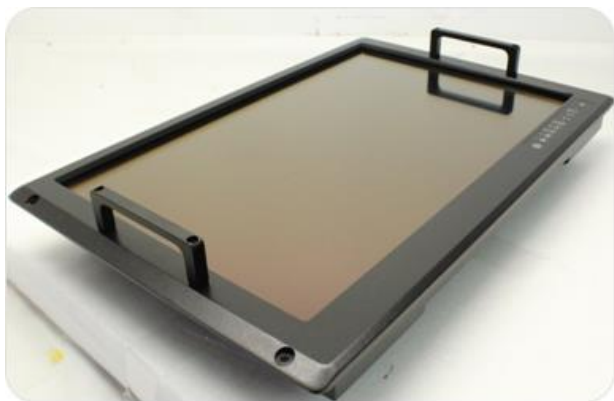
Model: VMPCW1730i_V2



Model: WMPC-2400C



MILITARY RACKMOUNT LCD MONITOR KEYBOARD KVM



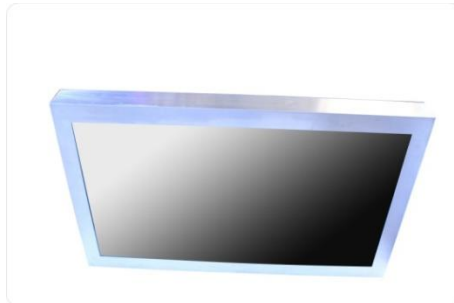
MARINE LCD AND MARINE PANEL PC



Model: AMAR1900HB-TR



Model: NMR-4600HB-DNV-V1



Model: WPM-MAR-PC-1500M2-TR-V1

CERTIFICATION:
DNVGL-CG-0339, IEC60945 4th,
CE, FCC, IACS E10



MARINE LCD AND MARINE PANEL PC



Model: WPM-MAR-PC-1500M2-TR-V1



Model: WPM-MAR-W2400A1-ST02

CERTIFICATION:
DNVGL-CG-0339, IEC60945 4th,
CE, FCC, IACS E10



RACKMOUNT LCD

- Rackmount 1U HDMI 2K/4K KVM
- 4K Rackmount LCD
- 2U Dual Monitor Console Drawer
- 2U Triple Monitor
- 4U Quad Monitor Rackmount LCD (Quad)
- 1U Rackmount LCD Console w/ CAC Card Reader
- Portable KVM Console
- KVM Console Drawer
- 1U Single Screen Console Drawer



RACKMOUNT LCD KEYBOARD HIGHLIGHTS



EWT-AVPW117-K-2DP



NVP3DW17e-4K 4K Panel



17" and 20.1" 1600x1200
Portable monitor keyboard console



DRP4W2150-H-TS

OUTDOOR LCD



Model: CCHW2150HB2-OB-SIP



IP66/IP67 FULLY SEALED TOUCH MONITOR AIO

Large Screen Sunlight

Open Frame Monitor

Chassis Monitor

Stainless Monitor

Rugged Industrial LCD



Steel Factory floor



Open Area on Research Ship



Restaurant Kitchen



Food Processing Plants

IP66/IP67 FULLY SEALED TOUCH MONITOR AIO

IP65 Rugged Panel PC

NEMA4X Panel PC

IP66 Rugged LCD



IP66/IP67 FULLY SEALED TOUCH MONITOR AIO



CUSTOMIZED TOUCHSCREEN SOLUTIONS

Industrial Touchscreen
Large Touchscreen



True Flat Zero Bezel



10 points Touches



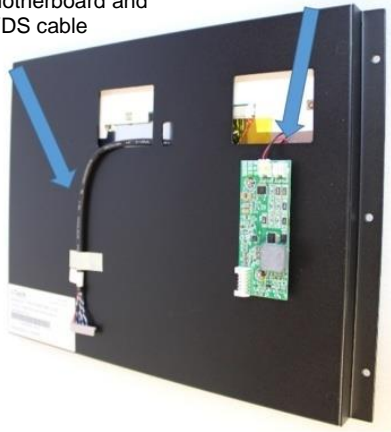
4K Curved Touchscreen



TOUCHSCREEN WIDE OPEN FRAME LCD

LVDS Cables (Please send us Pin for Assignment from your motherboard and specify Length of the LVDS cable

Backlight Inverter DC Input



Model: YOP1210WTHB2-LVDS



Open Frame Wide 10.1
With Optical Bonding and Touch



Open Frame 6.4" Panel PC
with Touch



Open Frame 32" High
Brightness with SAW Touch

HIGH BRIGHTNESS OUTDOOR LCD

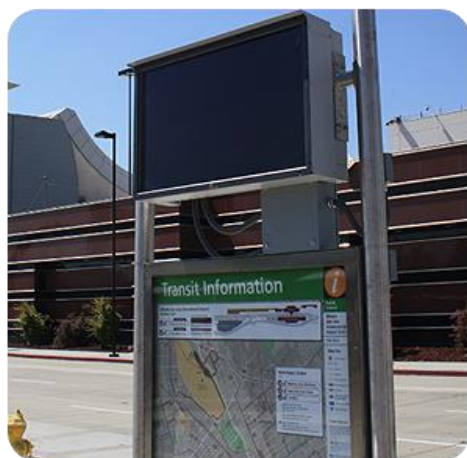
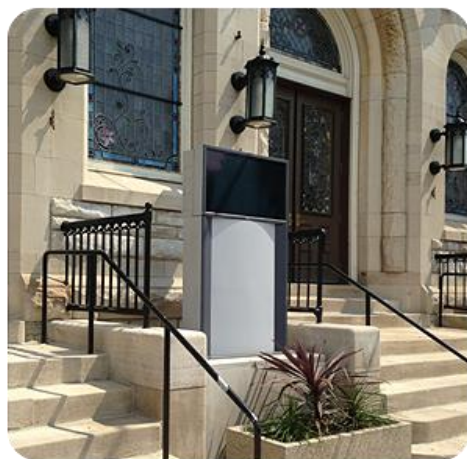
- All Weather Outdoor LCD
- Open Frame LCD
- Chassis Mount LCD
- Panel Mount LCD
- Rugged Industrial LCD



HIGH BRIGHTNESS OUTDOOR LCD



HIGH BRIGHTNESS OUTDOOR LCD



APPLICATION

BAE / Selex / UK, US Coast Guards



C-130 Aircraft in Naval Base, South Carolina, USA



10.4" Panel PC for Federal Aviation Adm. USA



APPLICATION

15" Sunlight-Readable Panel PC for Military Control



Swedish Coast Guard

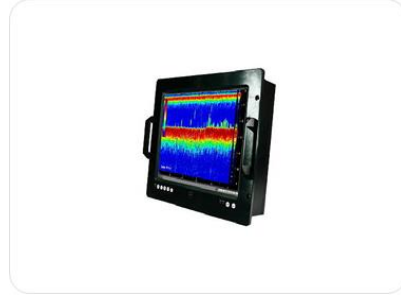


For Ballistic Missile Destroyers - French, Canada, Taiwan Navies

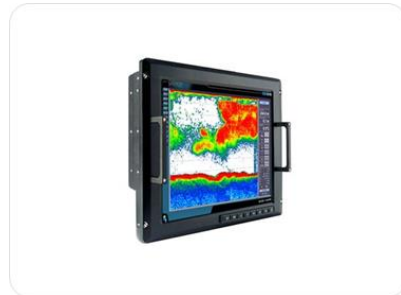


APPLICATION

Canada, French Navy Deep-sea Defense



Taiwan, French, Canada Navy



Navigation System Panel PC for Oil Tanker



APPLICATION

Control Center, Military Applications



FROM DESIGN TO MANUFACTURING AND QUALITY CONTROL

PROCESS STEP 1

Plan and Define the Product Requirement Analysis. (1-1.5 weeks)

PROCESS STEP 2

Product Design/Submit Cost Proposal / Draft Datasheet and Drawings / Revise & Resubmit/Approval (1-1.5 weeks)

PROCESS STEP 3

Place Order and Production Part Approval Process PPAP (1 week)

- a. Design Documentation(Components List and Components Datasheet, Package and Final drawings submittal)
- b. If this is a repeat order (Engineering Change Documentation)

PROCESS STEP 4

Start Production (Industrial Product 3-5 Weeks, Marine Product 4-6 weeks and Military product 8-12 Weeks)

- a. IQC- Inspection and testing of components supplied by our vendors. The purpose of this step is to catch any defects before assembly starts.
- b. IPCQ- Performed during the manufacturing process. This step catches defects that may arise during assembly. We will submit each components pictures and check against Components list in Step 3 before Final assembly.
- c. OQC-Outgoing Quality Control is the last step before fully assembled products leave the factory. We do once again to perform visual and functional inspections and can also take pictures before shipping out.

PROCESS STEP 5

Finished Deliver Product.

PHASE 1

Study and understand what customer need (1-2 Weeks)
We will reply with question and alternative solutions(more up-to-date computing power) (1-2 weeks)

PHASE 2

After finalize our proposed design and we will provide you the quantity pricing and sample pricing (2-3 weeks)
After approval of the proposal's pricing and product requirement, then we will work on Datasheet and drawings (2 weeks)

PHASE 3

After place order and received payment.
Prepare Documentations/components list/Final Drawings/shipping Weight and Dimensions for approval.
Lead time start after we got your Final Approval (Not the PO date)

PHASE 4-5

Production start
IQC
IPCQ
OQC: Before Final assembly, we will submit pictures for update and approved
Before shipment we will send you pictures of the final product for approval as well.

Optional for further Certification time is not included. We can do all the testing in before shipping the sample unit to you. Certification might take independently another 5-6 weeks.

MANUFACTURING AND QUALITY CONTROL



Production Lines



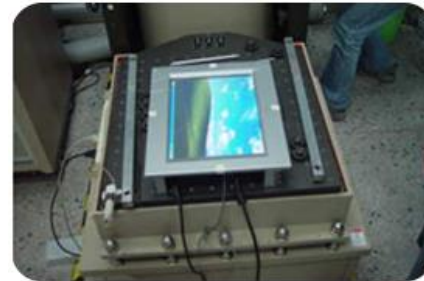
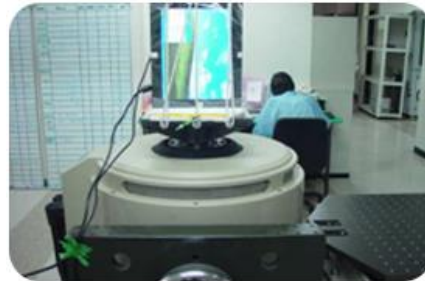
Metal Work Fabrication Shop



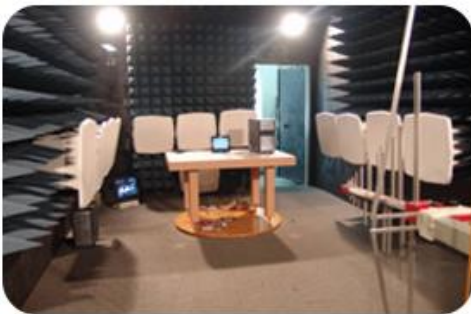
TESTING AND QUALITY CONTROL



IP65/66 Waterproofing Test



Shock & Vibration Tests – MIL-STD-810F



MIL-STD-461E Tests

END