

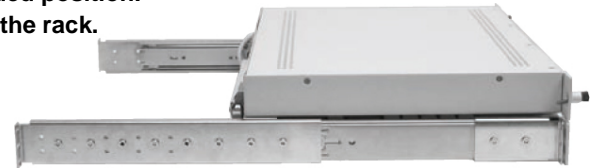
## 2U 17" and 19" LCD KVM CONSOLE

**Model: RCK2417ce  
RCK2419ce**



### FEATURES:

- Monitor and Cherry™ keyboard with two button touchpad occupies 2U of 19" rack space.
- Included adjustable mounting depth ball bearing slides lock in the fully extended position.
- Monitor powers off preserving back light life when tilted down for sliding into the rack.
- Retainer and lock options to keep unit contained in the rack when not in use.
- Housed in rugged steel construction with a durable powder coat finish.
- Reduced rack depth for mounting in confined spaces.



### Display Specifications:

<b>Display Type:</b> Active matrix TFT LCD	<b>Resolution:</b> 640 x 350
<b>Colors Displayed:</b> 16.7 million colors.	640 x 480
<b>Contrast Ratio:</b> 17": 1000:1 typ. 19": 800:1 typ.	800 x 600
<b>Brightness:</b> 17": 250 cd/m2 typ. 19": 270 cd/m2 typ.	1024 x 768
<b>Viewing Angle:</b> Horizontal (17"/19"): 170° /178° Vertical (17"/19"): 160° /178°	1280 x 1024
<b>Response Time:</b> 17": 5ms Typ. 19": 18ms Typ.	<b>Display Area:</b> 17" Diagonal 19" Diagonal
	<b>Horizontal Frequency:</b> 31 to 80 KHz
	<b>Vertical Frequency:</b> 55 to 76 Hz.

### General Specifications:

<b>Dimensions:</b> 17": 19.0" (W) x 3.50" (H) x 13.25" (D) 19": 19.0" (W) x 3.50" (H) x 14.90" (D)
<b>Weight:</b> 20 lbs
<b>Power (TFT Display):</b> 90 - 260 VAC, 50/60 Hz. 60 Watts maximum
<b>On-Screen Controls:</b> Brightness, Contrast, Horizontal & Vertical Position, Auto Adjust, OSD H & V Position, Load and Save Values
<b>Plug &amp; Play:</b> DDC1 and DDC2B
<b>Temperature:</b> Operating: 0° C to 50° C Storage: -20° C to 60° C
<b>Humidity:</b> Operating: 10 to 85% RH (max)
<b>Input Signal (VGA):</b> R.G.B. analog video, TTL H & V sync
<b>Input Connector:</b> Display: 15-pin mini D-Shell
<b>Colors Available:</b> Black(B) and Light Gray

### Keyboard and Mouse Specification:

<b>Rollover:</b> Alpha N-key rollover.
<b>Auto repeat:</b> Yes.
<b>Self Diagnostics:</b> At power on and system reset.
<b>Data Buffer:</b> All codes buffered before sending.
<b>Operating voltage:</b> +5 VDC +/- 5%.
<b>Operating current:</b> 200 mA
<b>Touchpad Size:</b> 2.2" X 1.6"
<b>Buttons:</b> Left and Right
<b>Interface:</b> Keyboard: PS/2 Touchpad: PS/2
<b>Compatibility:</b> Windows operating systems.



i-Tech Company LLC

TOLL FREE: (888) 483-2418 • EMAIL: [info@i-techcompany.com](mailto:info@i-techcompany.com) • WEB: [www.i-techcompany.com](http://www.i-techcompany.com)