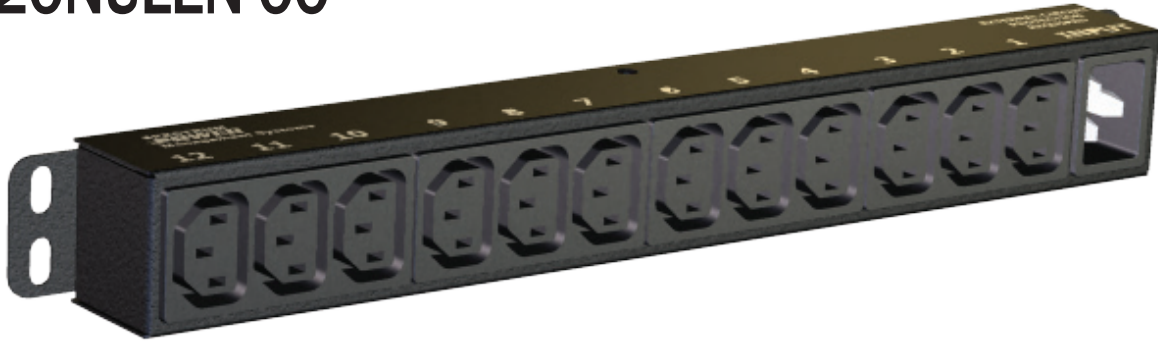


VERTICAL MOUNT POWER STRIP

..... 14" SPACE SAVER SATELLITE DESIGN

72A-120NULEN-00



FEATURES

- Compact 14" Chassis
- IEC C20 Power Inlet Connector
- 12 IEC C13 Receptacles
- Ruggedly Constructed 0U Design

TECHNICAL SPECIFICATIONS

Input / Output

- Voltage Input: 100-127 VAC or 200-250 VAC*
- Voltage Output: 100-127 VAC or 200-250 VAC*
- Line Current: 16A / 20A* Max.
- Output Power: 3.68 / 2.40* KVA
- Output Connector: 12 x IEC C13
- Input Protection: Requires External Branch CB

Physical

- Size (Overall): 14.0"W x 1.73"H x 1.50"D

* North America Rating

We at i-Tech Company know how important your rack space is. That's why we strive to produce high-quality power solutions in a compact size, leaving valuable "U" space for other network-critical devices. The small 14" package allows for extra room on the mounting rail for additional 0U power strips. However, if horizontal mounting is desired, 1U adapter brackets can be purchased for a quick and easy horizontal installation. Both installations allow the power sockets to be placed close to the equipment being powered, reducing the nuisance of cable clutter.

The 72A-120NULEN-00 is an excellent choice for standard power distribution to a variety of devices that do not require circuit protection. This device features 12 IEC C13 outlets and an IEC C20 inlet input. Although commonly installed in a rack environment, this power strip is suitable for a variety of installations including office work stations, computer consoles, and network operating centers.

For additional information on the 72A-120NULEN-00 or other power strips from the Spectrum Power Management Systems line, please contact a Sales Representative at sales@i-techcompany.com or visit the website at www.i-techcompany.com.

Toll Free: 1-888-483-2418

Tel: 1-510-226-9226

Fax: 1-510-372-2736

Email: sales@i-techcompany.com

Address: 42828 Albrae Street, Fremont, CA 94538