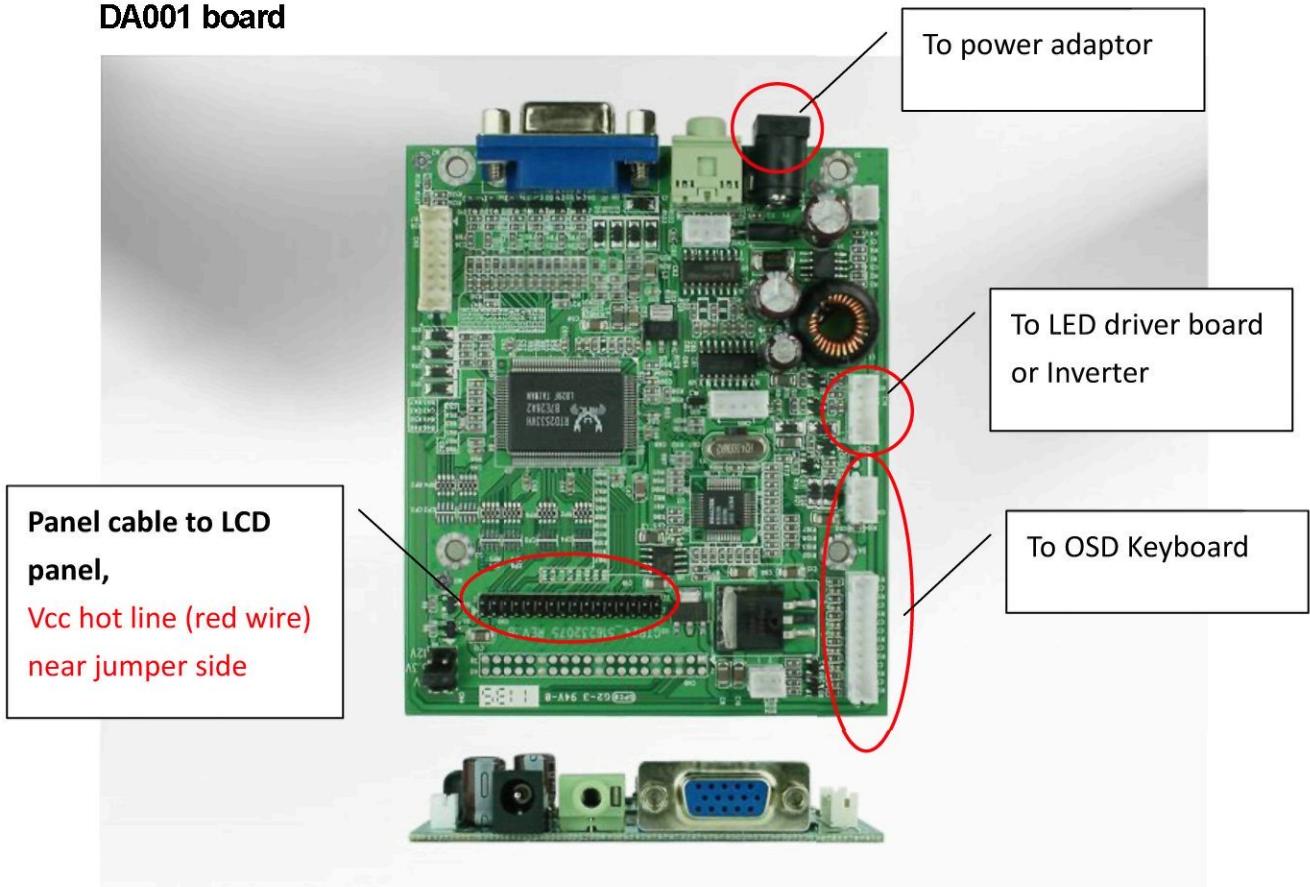
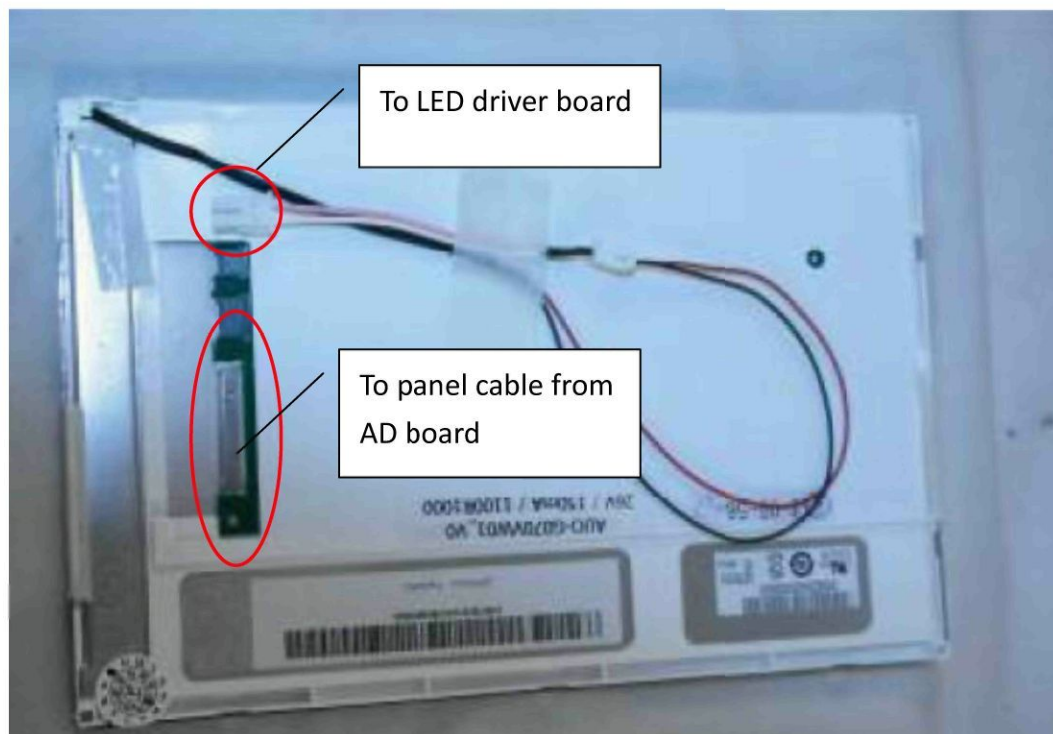


## Standard Operating Procedure (SOP) for DA001 Loose skit LCD 7" Panel G0706VW01-V0 with Touchscreen

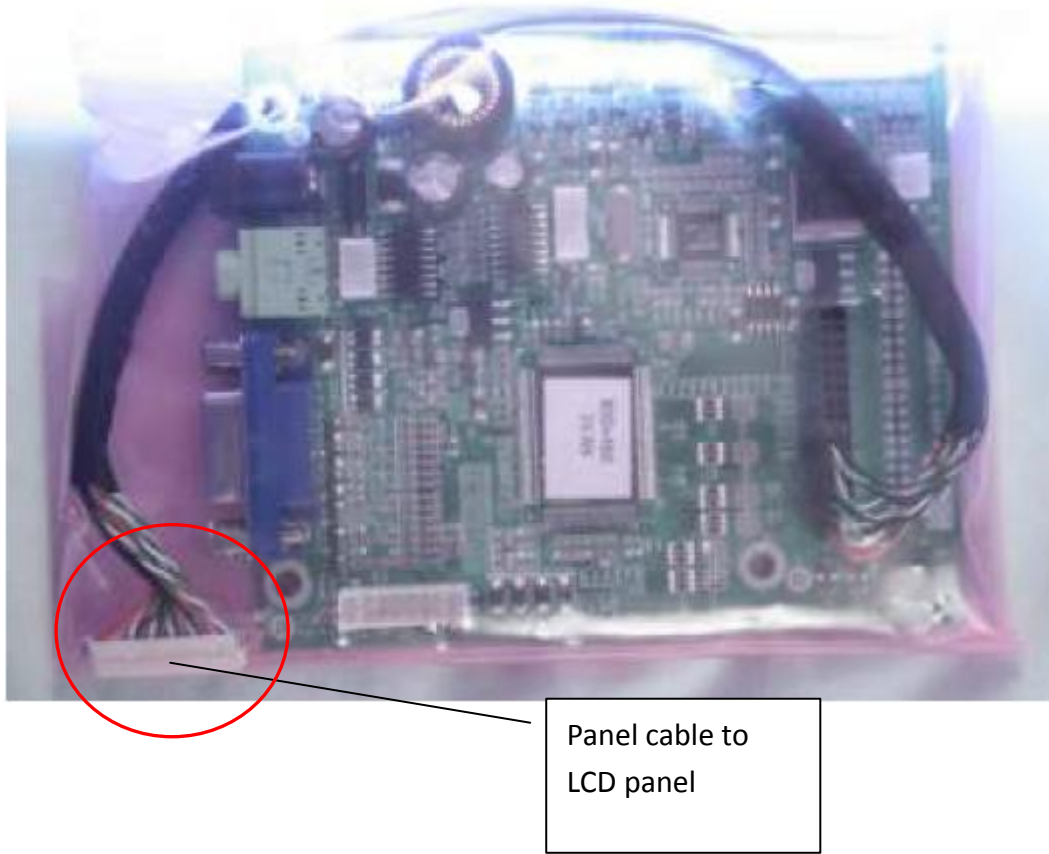
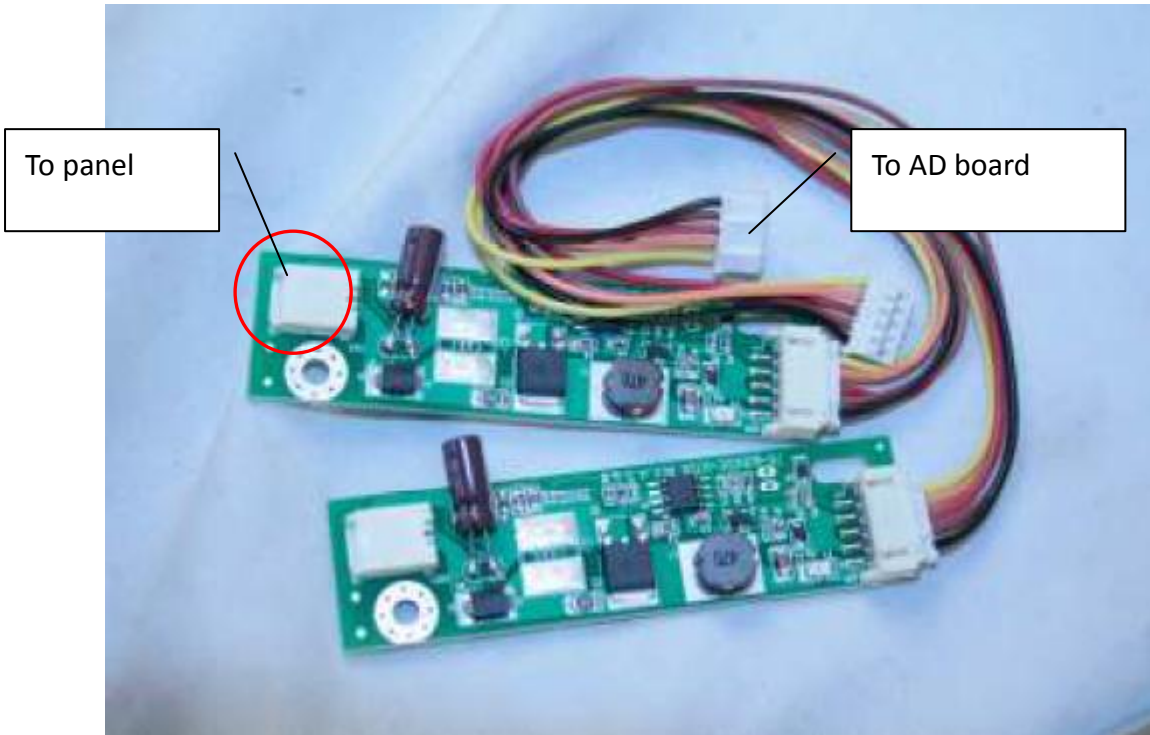
### DA001 board



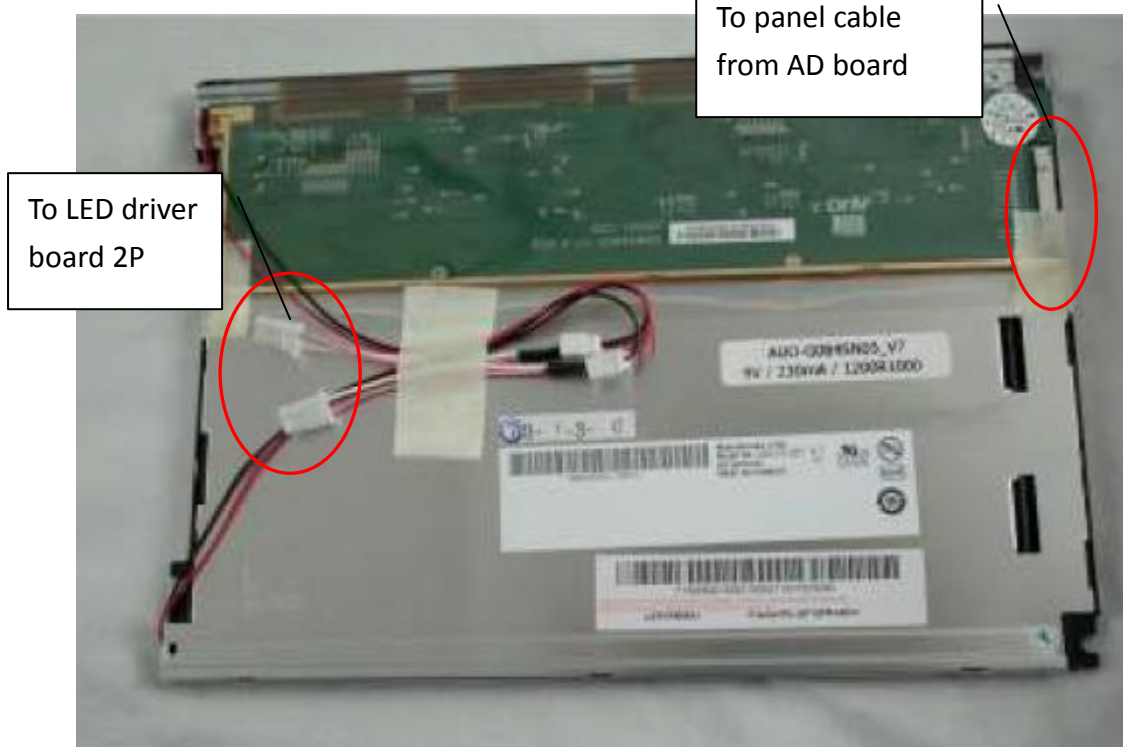
### LCD panel 7" G0706VW01-V0



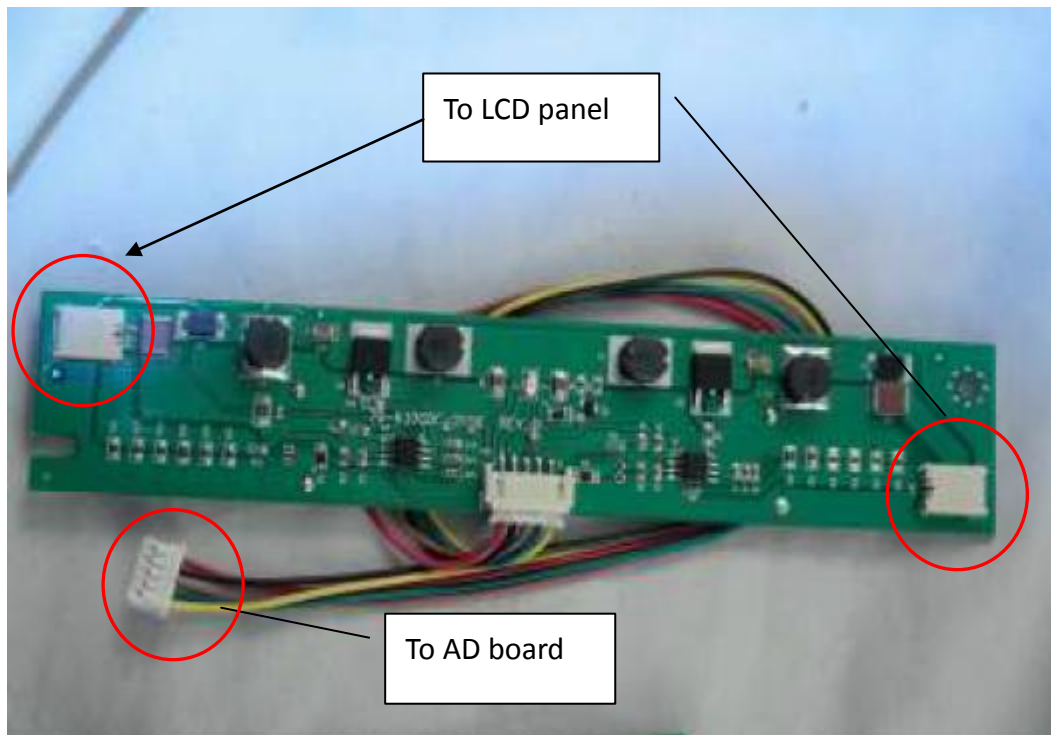
LED driver board 1 port (1P)



LCD panel 8" G084SN05-V7



LED driver board 2 ports (2P)



# 10" LCD panel N101L6-L0A

