

DKP Series Keyboard Replacement Instruction

Rev 1.0



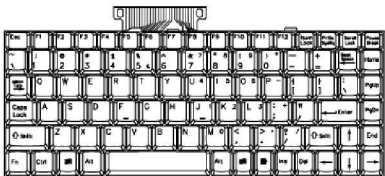
i-Tech Company LLC
TOLL FREE: (888) 483-2418 • EMAIL: info@itechlcd.com • WEB: www.iTechLCD.com

Notes:

- 1. Please check all peripherals according the list before installation. To make sure that the whole unit was not damaged and lost during shipping process. If you encounter any problem, please contact your dealer.
- 2. Before install, make sure all devices have been turned off.
- 3. Reliable grounding of rack-mounted equipment should be maintained. Particular attention should be given to supply connections other than direct connections to the branch circuit.

Hardware kits contents:

- 1. Keyboard x 1

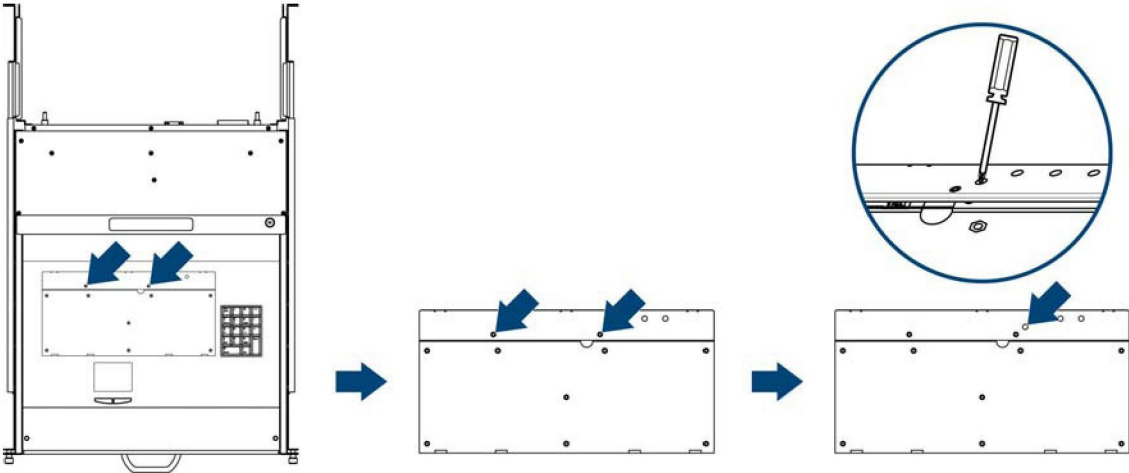


- 2. Name plate x 1

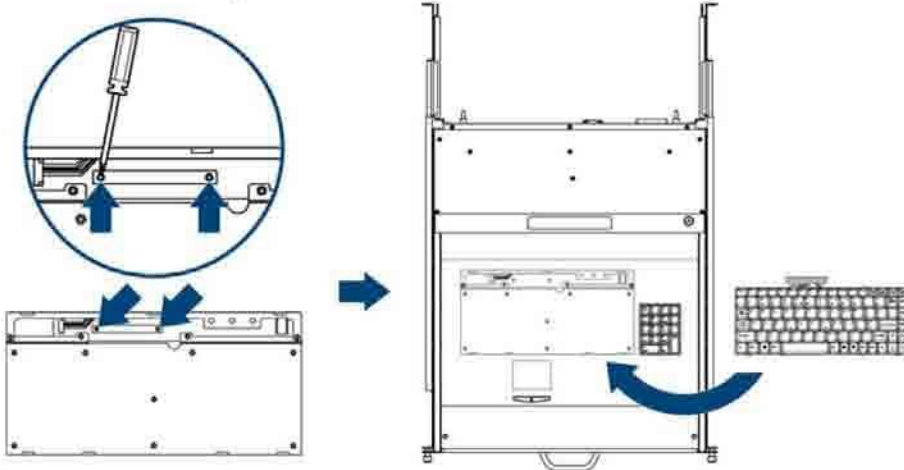


Install keyboard steps (Gemini as the example):

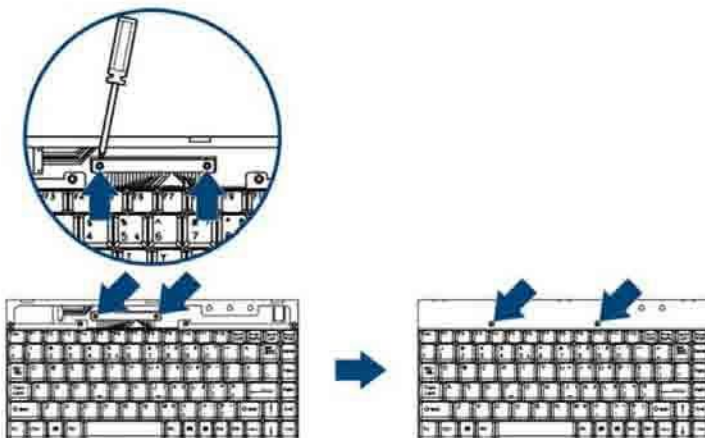
- 1. Unscrew two screws then use screwdriver to take keyboard cover out.



2. Unscrew two screws to take rubber pad and rubber pad holder out.
Then install keyboard.



3. Install two screws to combine rubber pad with rubber pad holder and keyboard membrane. Then install two screws to combine keyboard cover.



4. Stick name plate to finish install keyboard.

