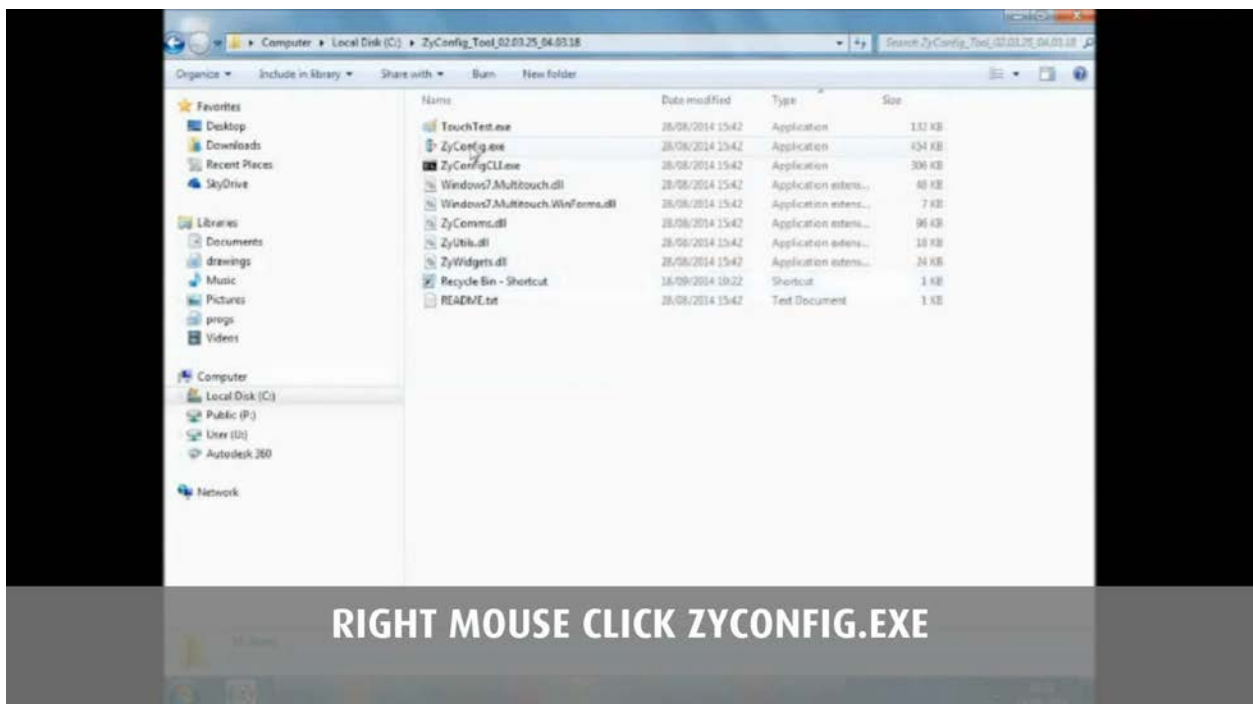
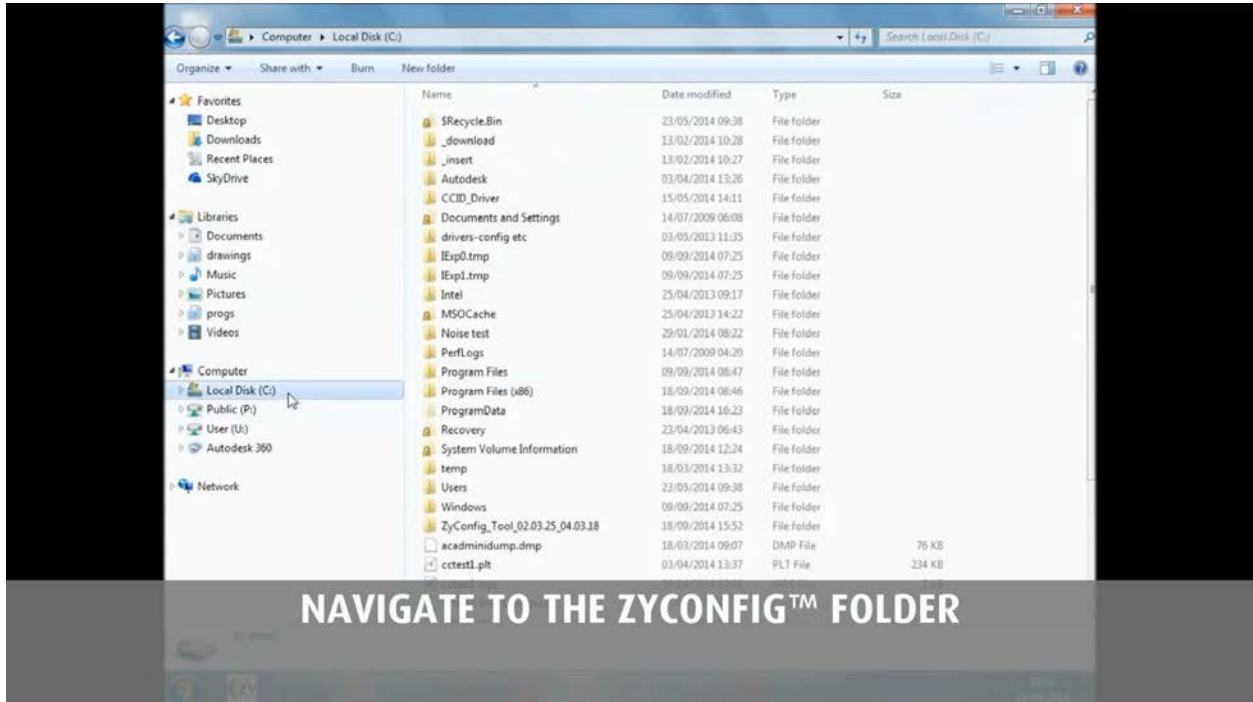
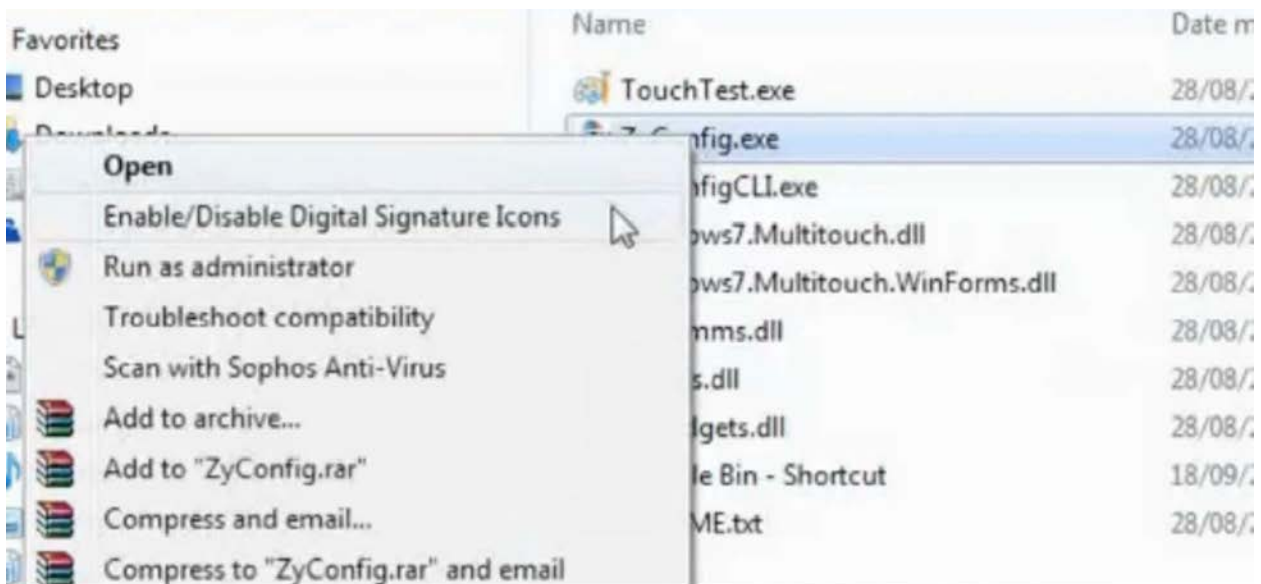
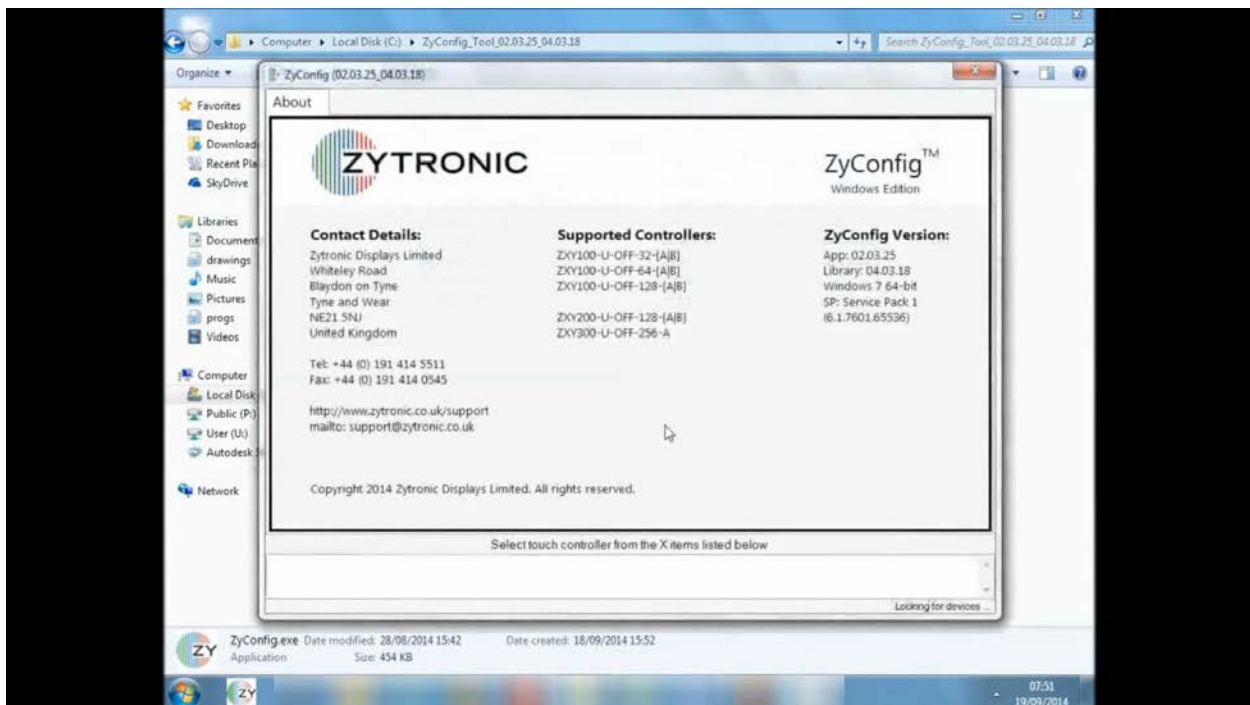


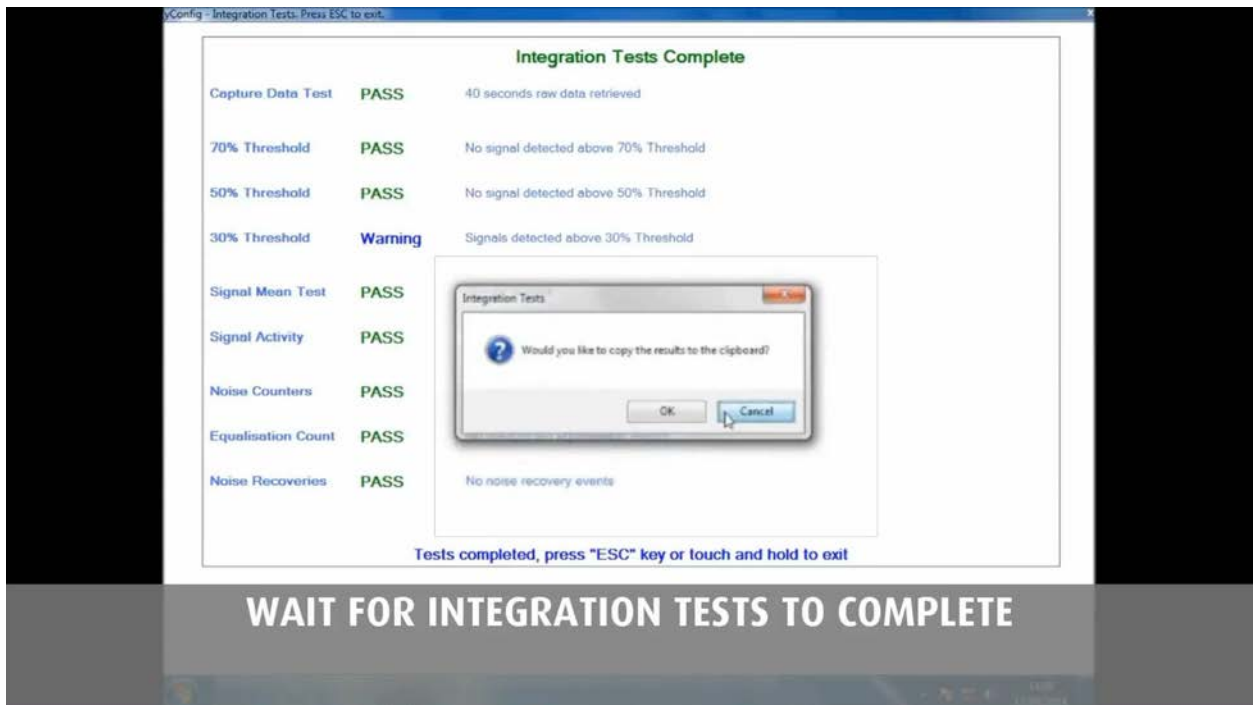
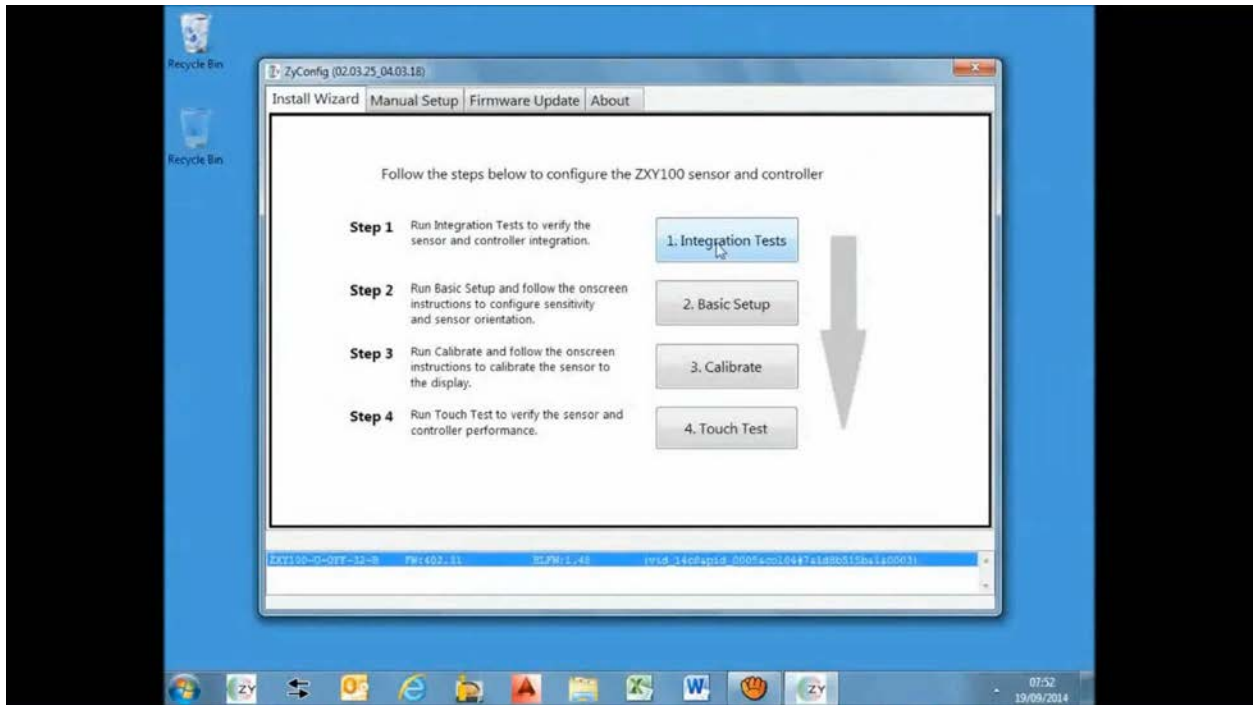
Using ZYCONFIG™ to Set Up a ECH-SIP Sensor and Controller

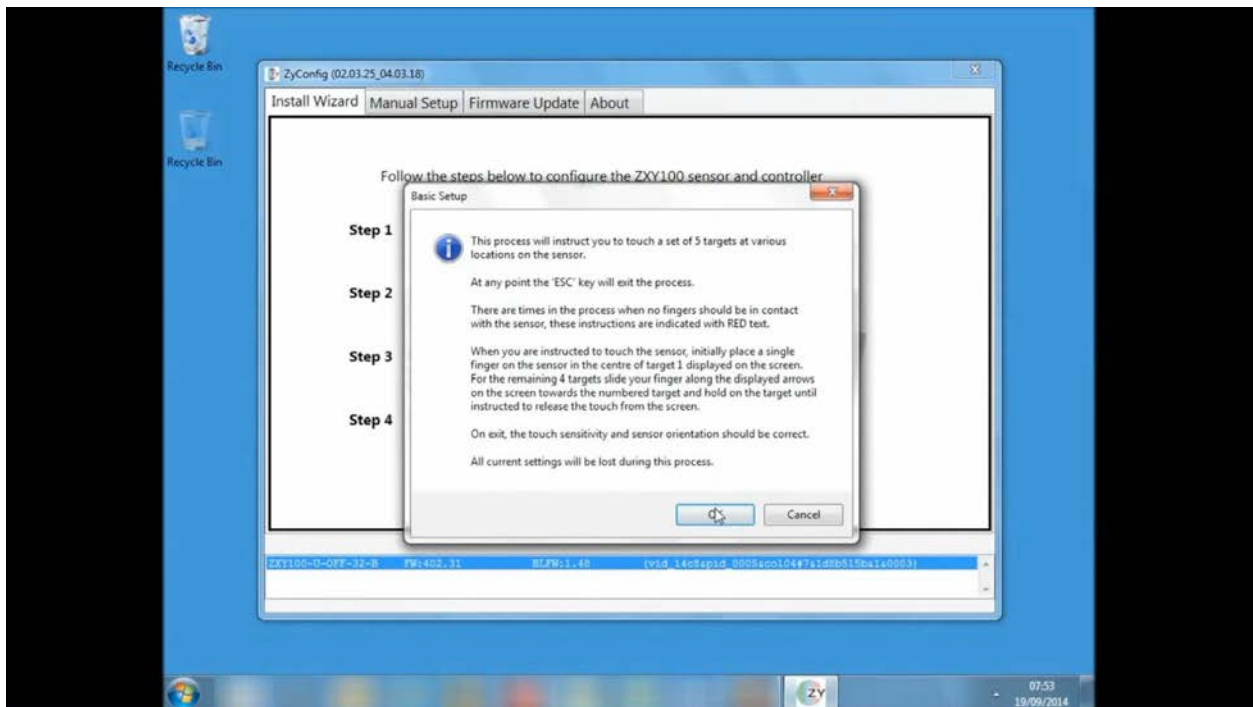
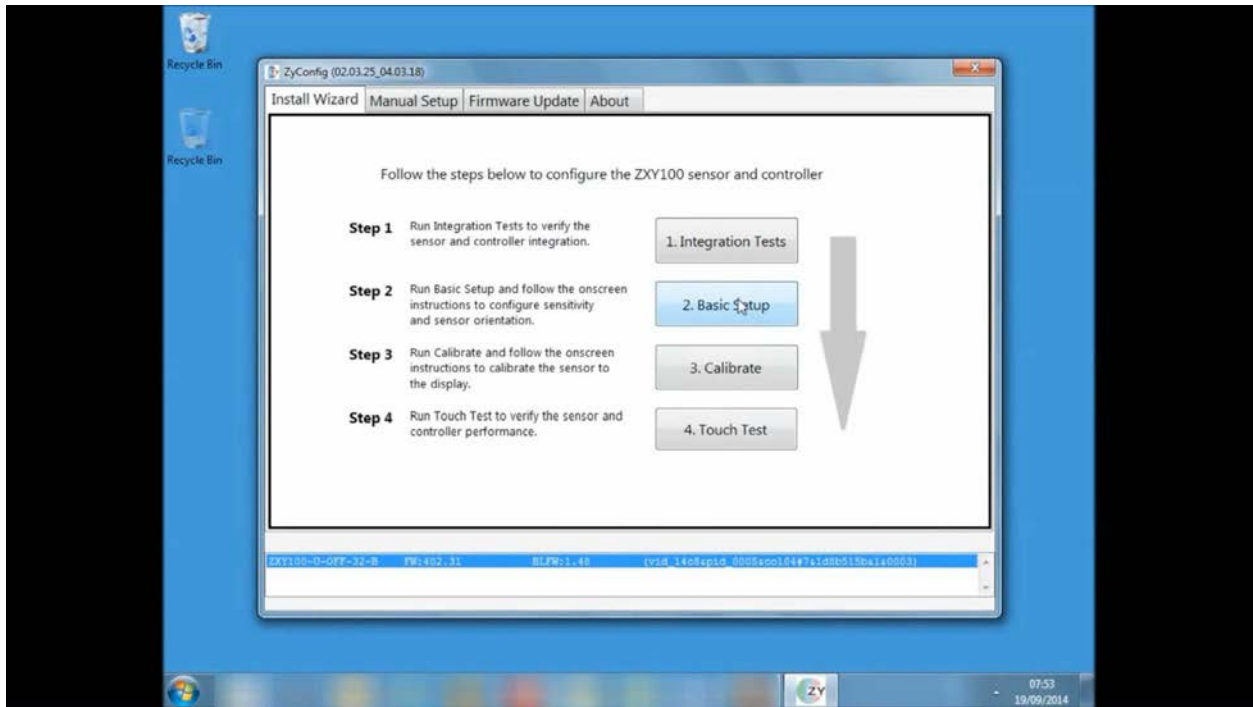




**RUNNING AS ADMINISTRATOR IS REQUIRED
TO ENABLE CALIBRATION**







Place your finger on target 1
and do not remove it
Only one finger should be in
contact with the sensor

Testing coarse sensitivity = 1, activation threshold: 0, deactivation threshold: 49

1



FOLLOW THE ON-SCREEN INSTRUCTIONS

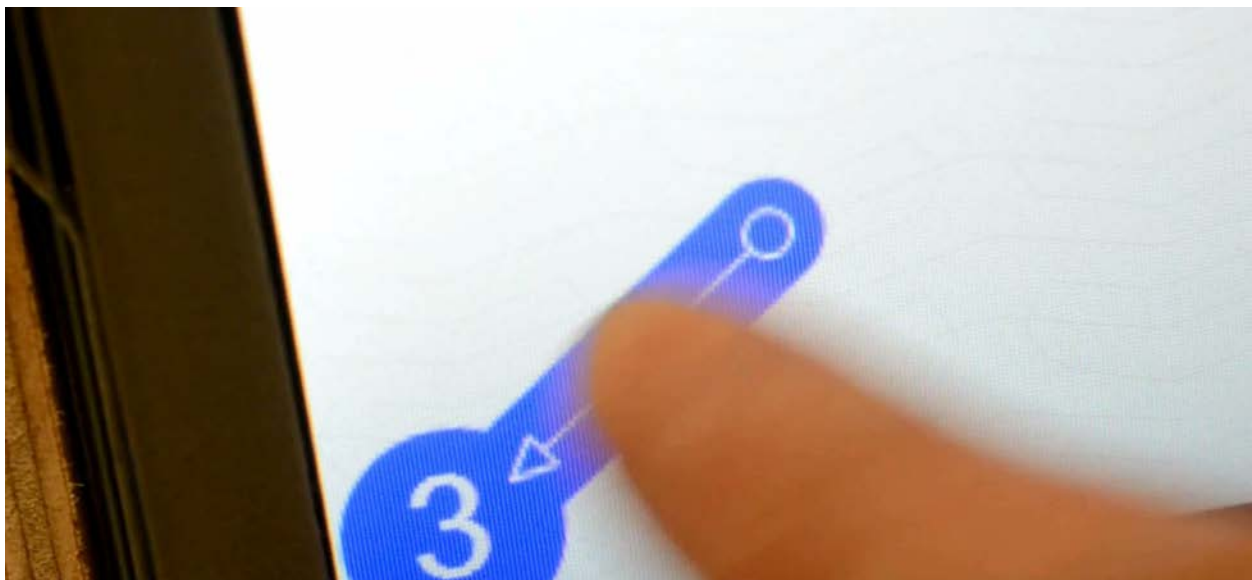
sensitivity = 2, activation thresh



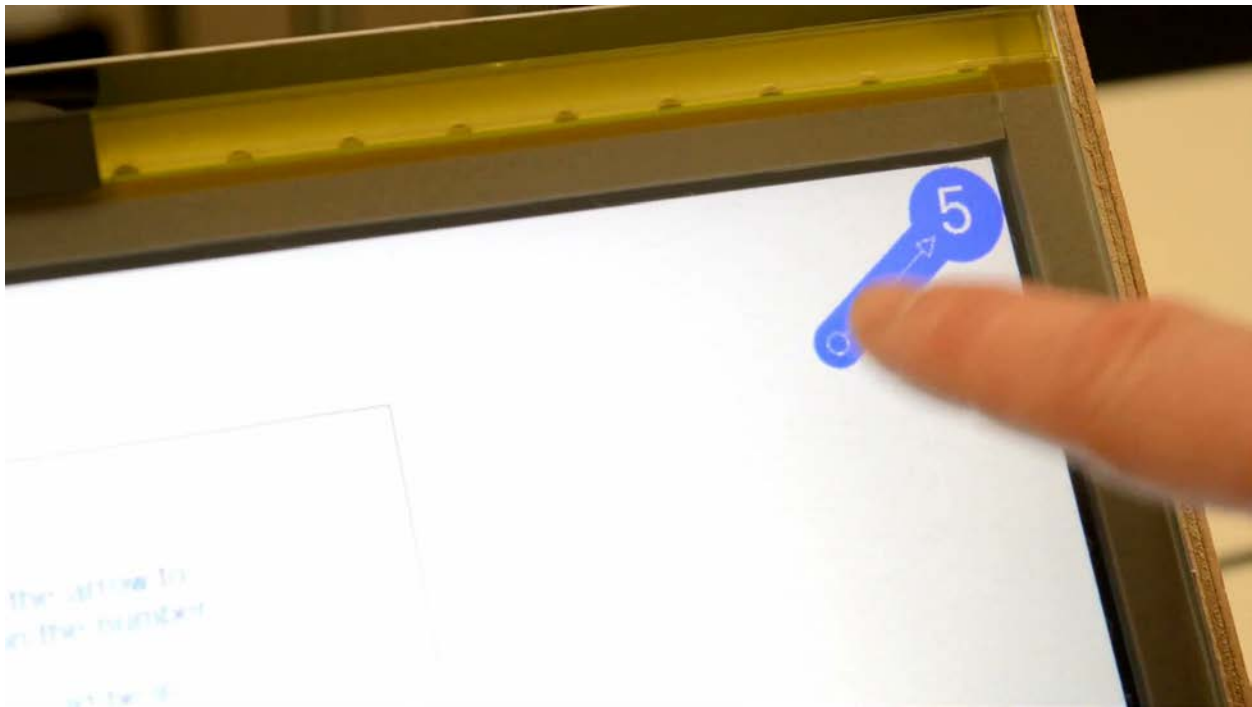
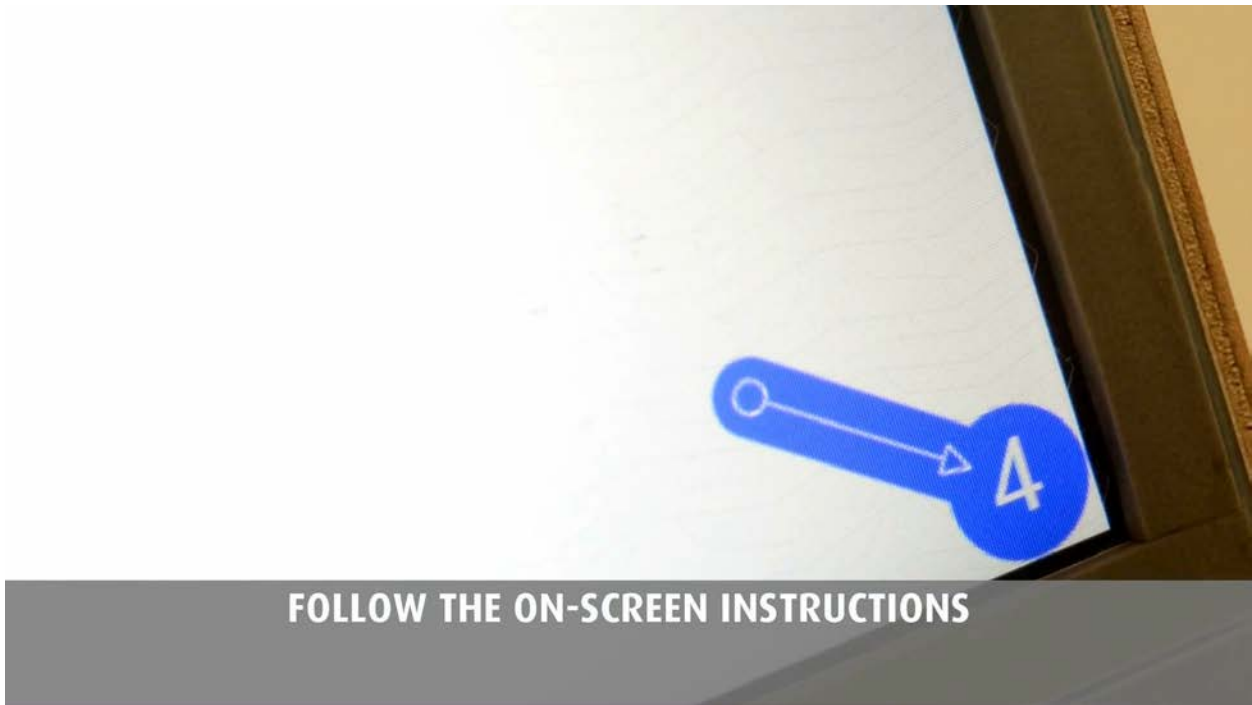
FOLLOW THE ON-SCREEN INSTRUCTIONS

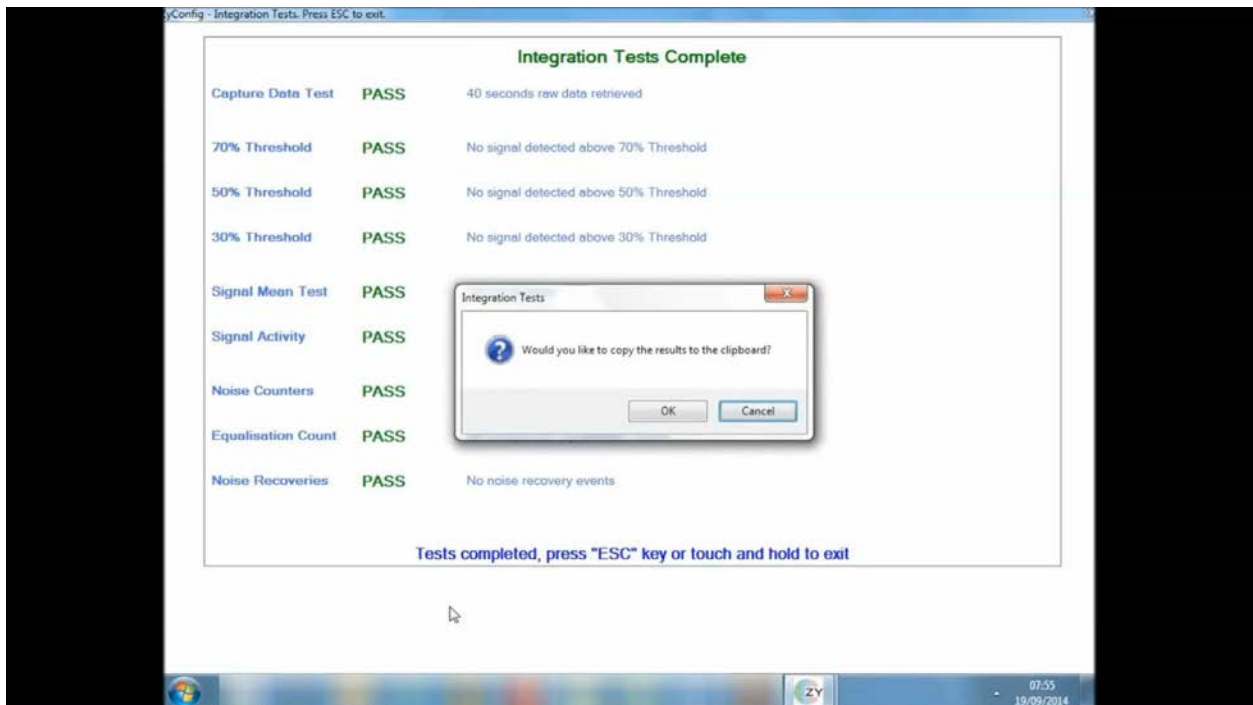
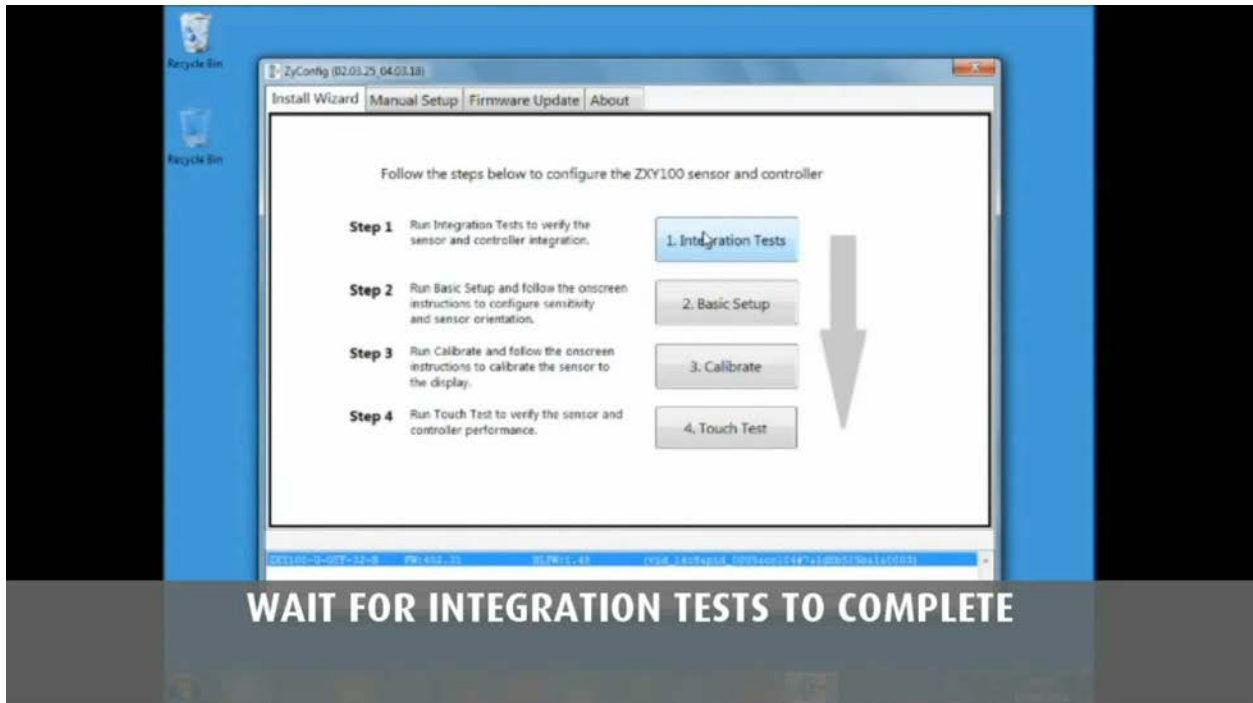


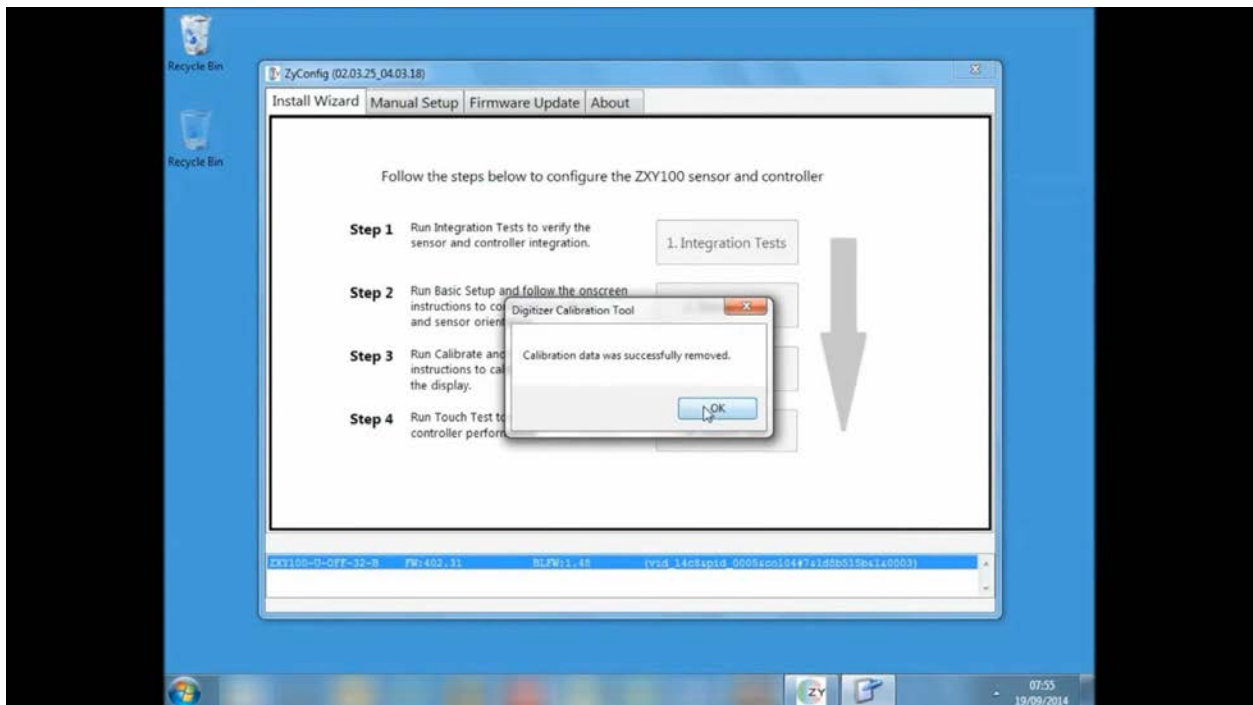
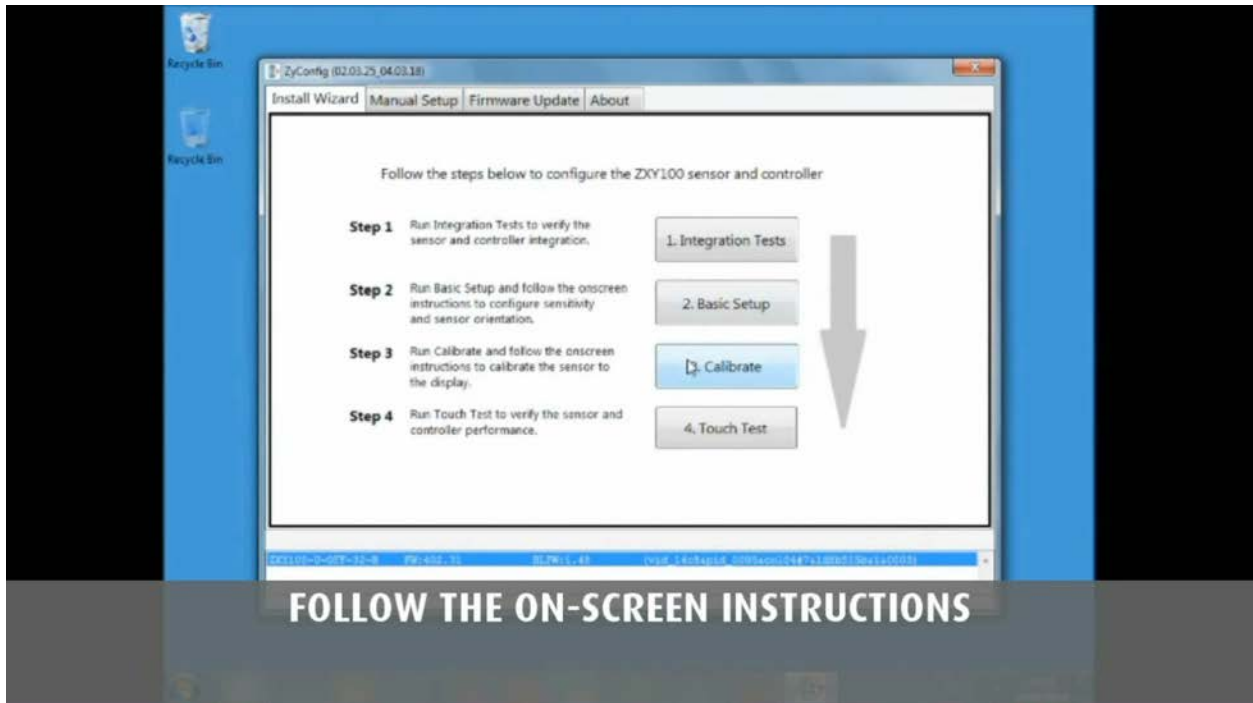
FOLLOW THE ON-SCREEN INSTRUCTIONS

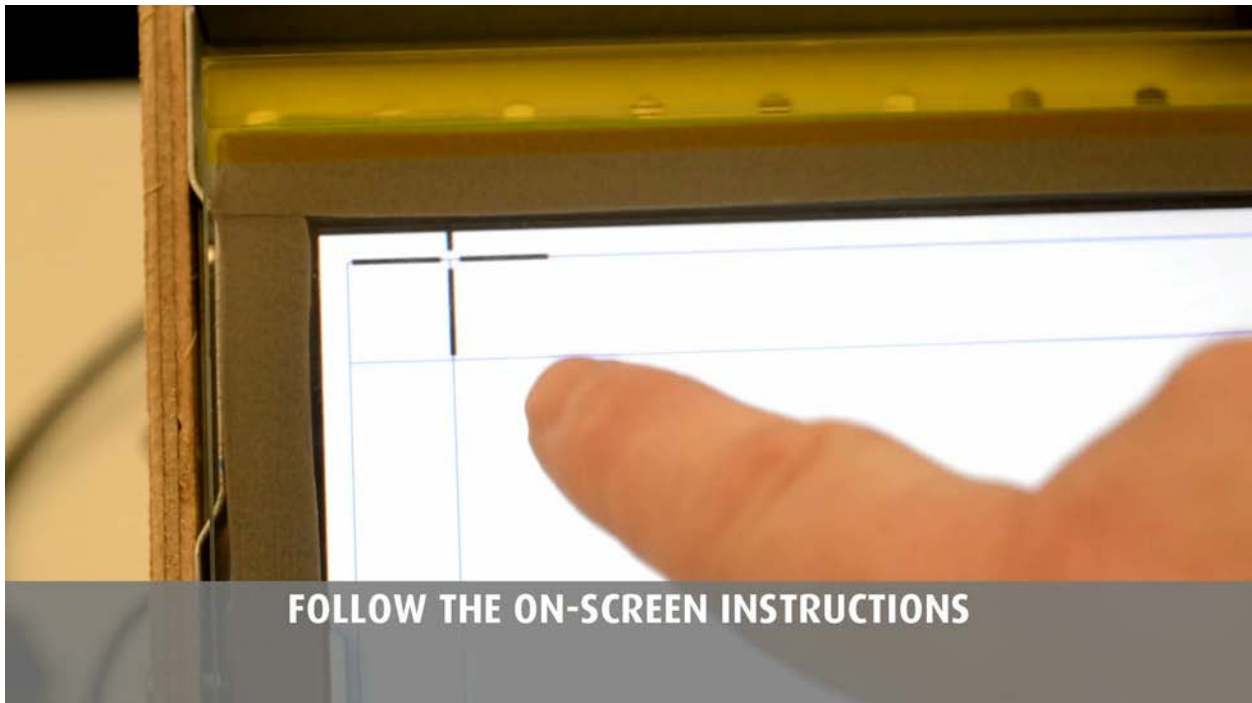
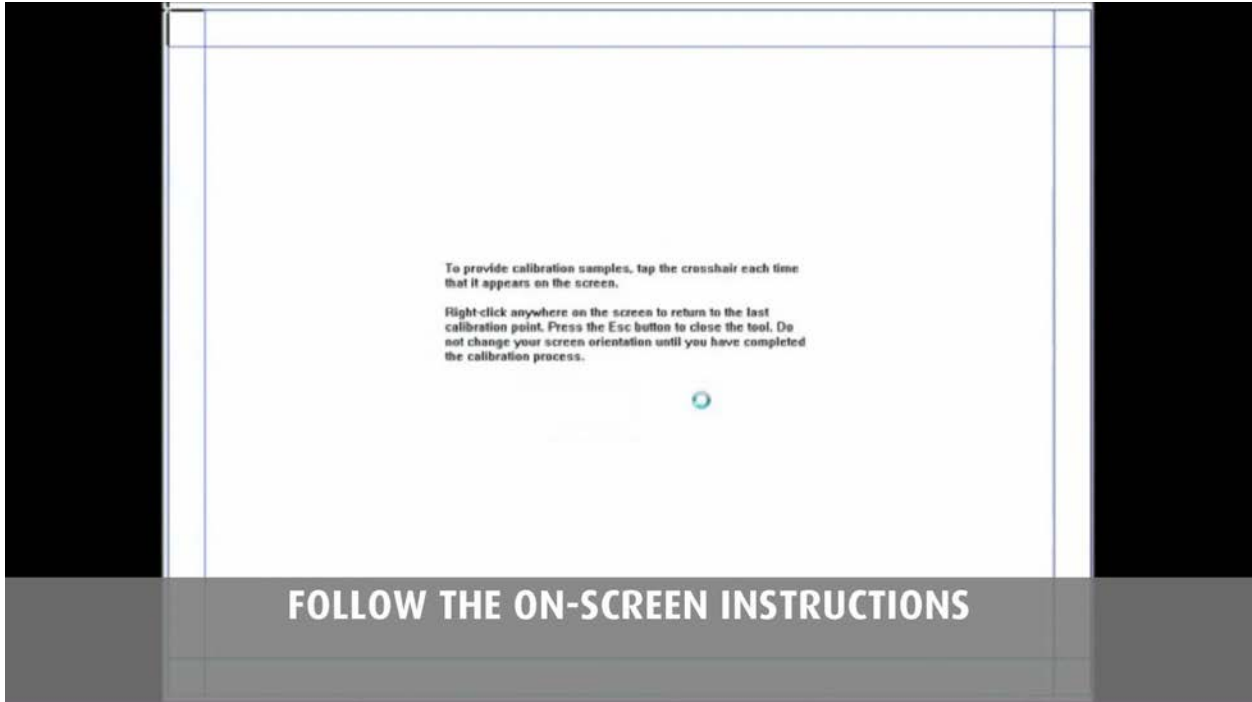


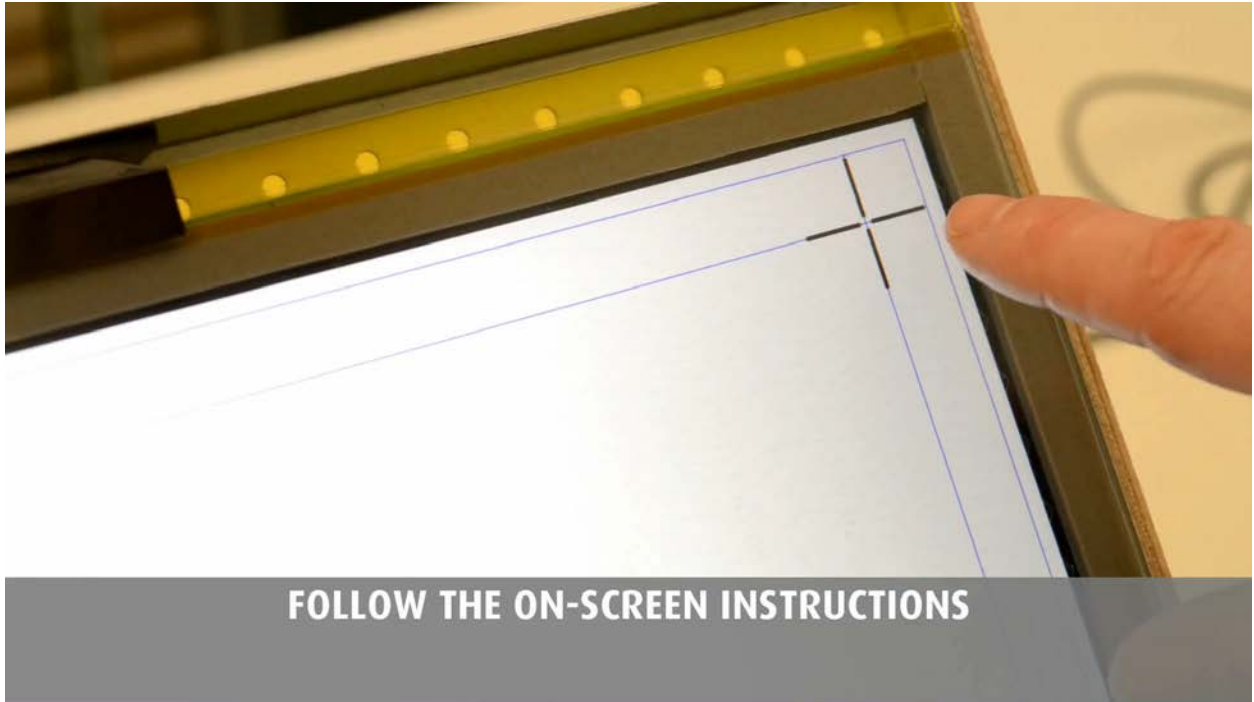
FOLLOW THE ON-SCREEN INSTRUCTIONS











FOLLOW THE ON-SCREEN INSTRUCTIONS

