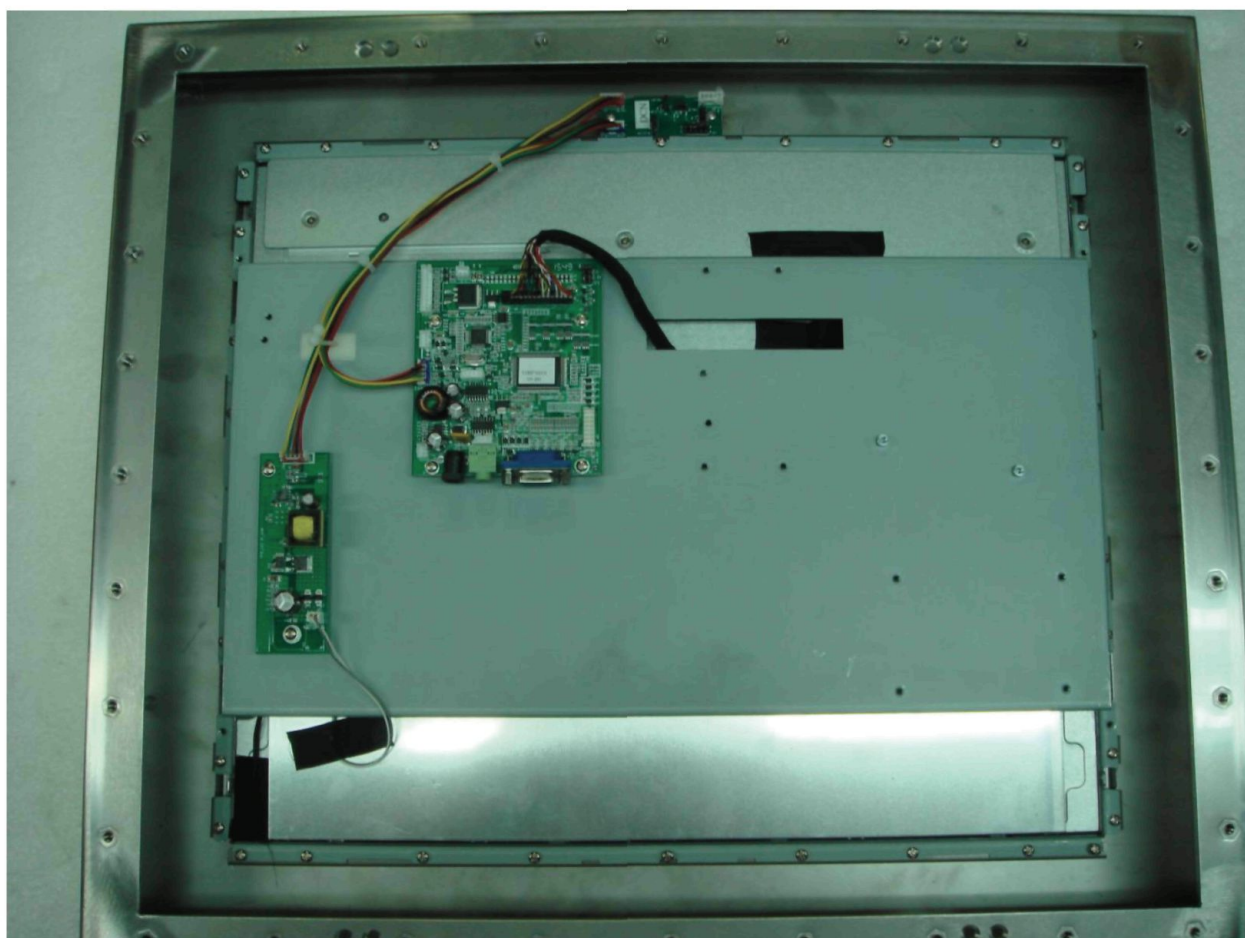


How to remove and replace ECHXXXX-SIP units back plate for service

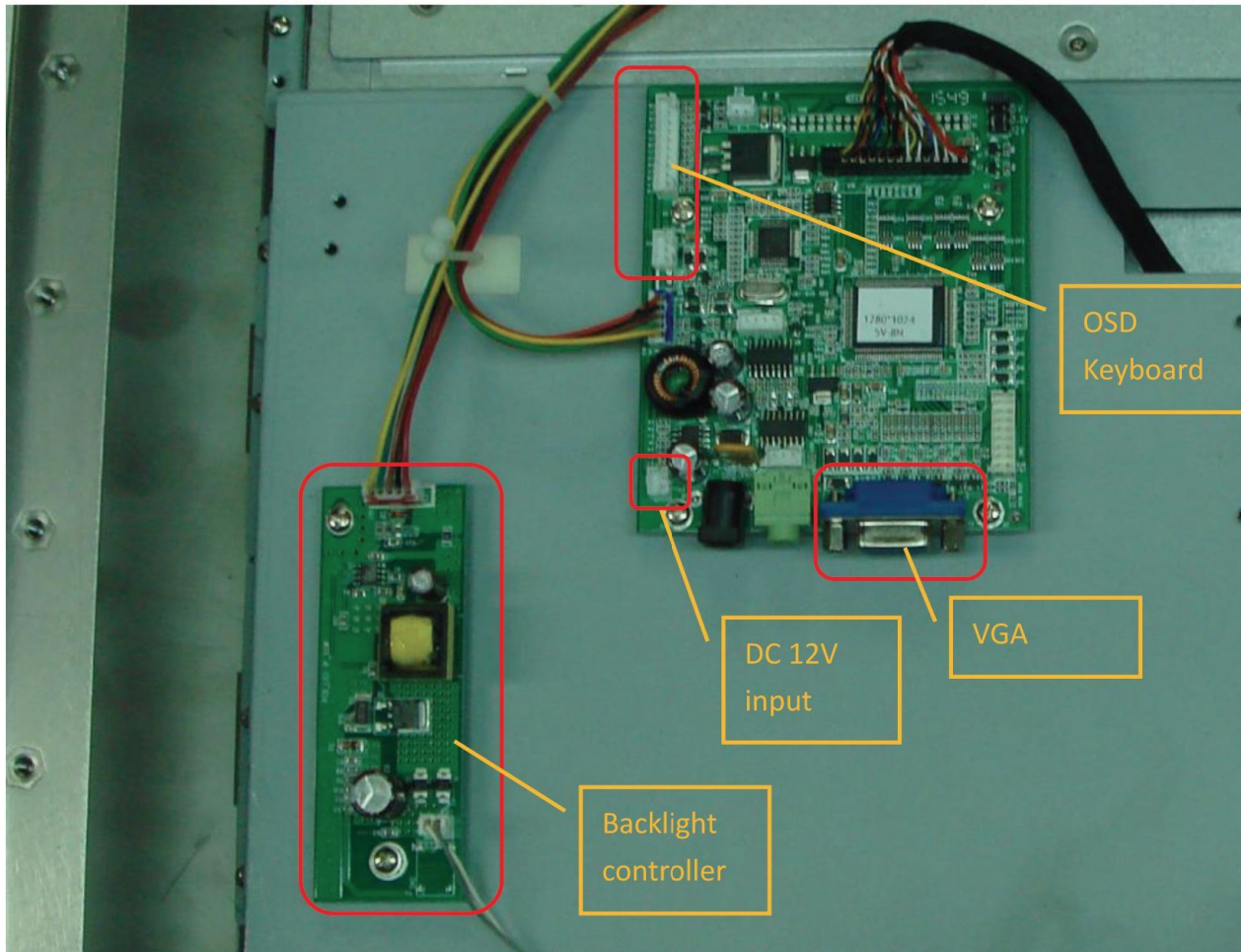
1. Remove screws of back cover, and then open back cover.



2. Remove internal VGA, OSD keyboard and power input cables to separate back cover from monitor.



3. Replace backlight controller and OSD keyboard on back cover



4. Recover all cables inside and integrated back cover for function test. At test stage, install some screws of back cover.
5. Make sure function work properly before install all screws of back cover by balance way around edges, and then lock tightly also by balance way around edges.

Remark:

1. Screwdriver torque for back cover set at 19 +/- 1 Kgf-cm, for internal bracket
2. Screwdriver torque for internal PCB 7 +/- 0.5 Kgf-cm
3. When doing recovery, over torque may damage screw or hole of screw. Recover screw by balance way on all sides while locking tightly.