






# MANAGE ALL YOUR DIGITAL SIGNAGE

File Mode Tools Help

 Add Device  Add Group

Device List

-  test

Device Property  Frame Setting  Schedule Setting

Product ID

Device Name  Group

Remote Login

Host  Port

Password

System Configuration

Touch Panel

☐ Calibration

☐ Reset Password

☐ License Key

Network Setting

IP Address

Network Mask

Gateway

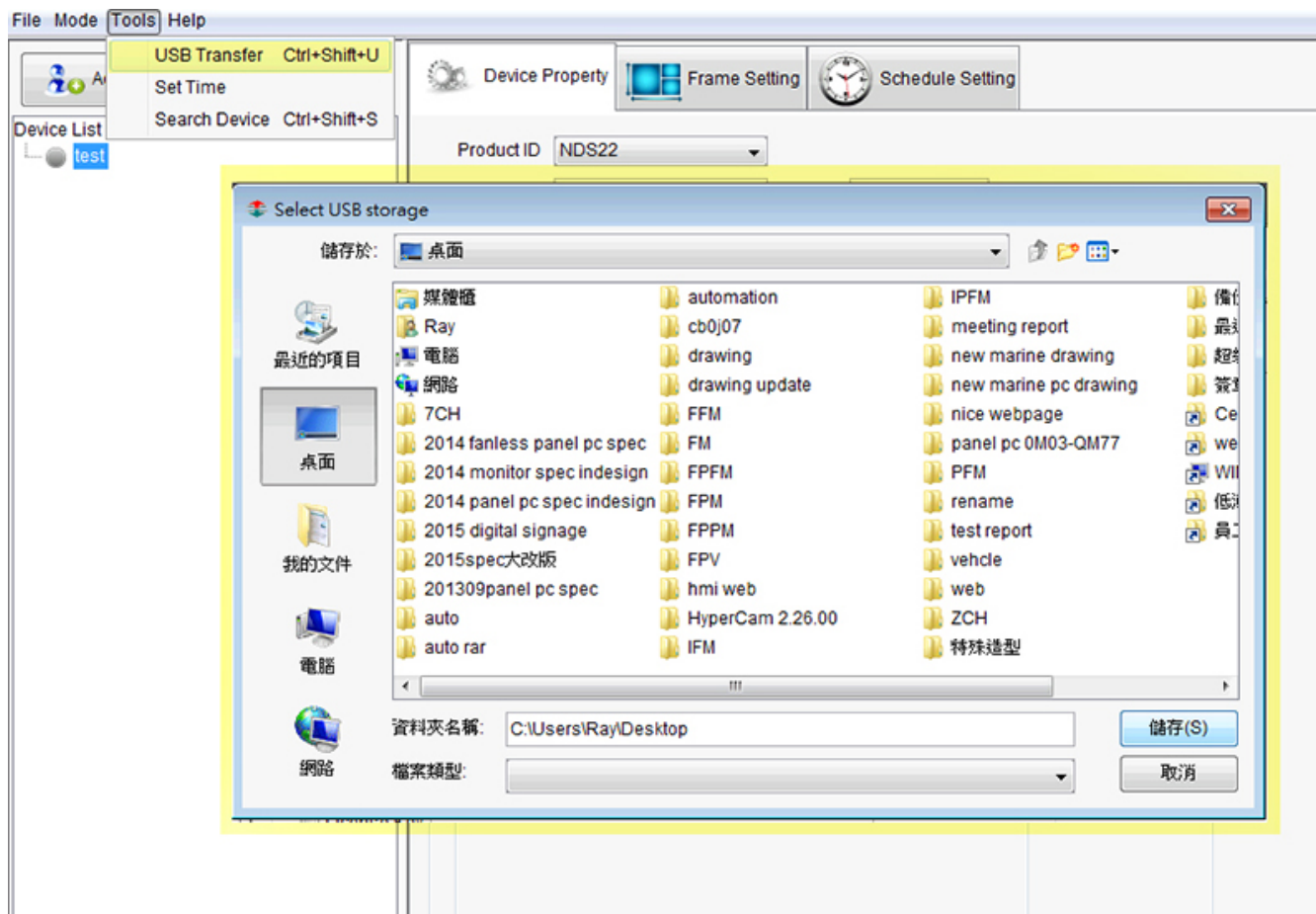
DNS

Device List

Control Panel

Software

Content Manager : NMT software does not need to be installed, and it is running on Windows OS. Heart of the digital signage network; to manage your media assets, playlists, content distribution – to monitor your players NMT is green installation software (Non-install), support Windows OS. NMT is a media broadcast distribution, scheduling and management software tool. Allow the user to set up Client IP address, scheduling contents and update via USB.



Update via USB

- Click USB transfer button.
- Create and Save the “script” to USB dongle.
- Save the Video or photo contents into USB dongle.
- Insert USB into player.
- The contents will transfer to SD card storage.

File Mode Tools Help

Add Device Add Group

Device List

- test

**Device Property** Frame Setting Schedule Setting

Product ID

Device Name  Group

Remote Login

Host  Port

Password

System Configuration

Touch Panel

☐ Calibration

☐ Reset Password

☐ License Key

Network Setting

IP Address

Network Mask

Gateway

DNS

## Update via LAN

Device Property Setting: The user can be required to change their product ID and password. Click “connect” button to make sure connection status is success.

File Mode Tools Help

Add Device
 Add Group

Device List

- test

Device Property
 Frame Setting
 Schedule Setting

Product ID: NDS22

Device Name: test Group:

Remote Login

Host: 192.168.1.123 Port: 5678

Password: ●●●●●● Connect New Password

System Configuration

Touch Panel

☐ Calibration: None

☐ Reset Password

☐ License Key:

Network Setting

IP Address: 0 . 0 . 0 . 0

Network Mask: 0 . 0 . 0 . 0

Gateway: 0 . 0 . 0 . 0

DNS: 0 . 0 . 0 . 0

Export

1.1 Extranet Network Setting: The user could set up DHCP or Static IP. How to set up local Network Static IP Setting:

1. Please contact administrator for helping. The administrator could provide Network Mask, Getway IP and DNS.
2. Enter the IP address, Network Mask, Getway IP and DNS in the network setting. Select static IP in the network setting.
  - The contents will transfer to SD card storage.

File Mode Tools Help

Add Device Add Group

Device List

- test

Device Property Frame Setting Schedule Setting

Product ID NDS22

Device Name test Group

Remote Login

Host 192.168.1.123 Port 5678

Password ●●●●●● Connect New Password

System Configuration

Touch Panel

☐ Calibration None

☐ Reset Password

☐ License Key

Network Setting

DHCP DHCP static\_IP

IP Address 0 . 0 . 0 . 0

Network Mask 0 . 0 . 0 . 0

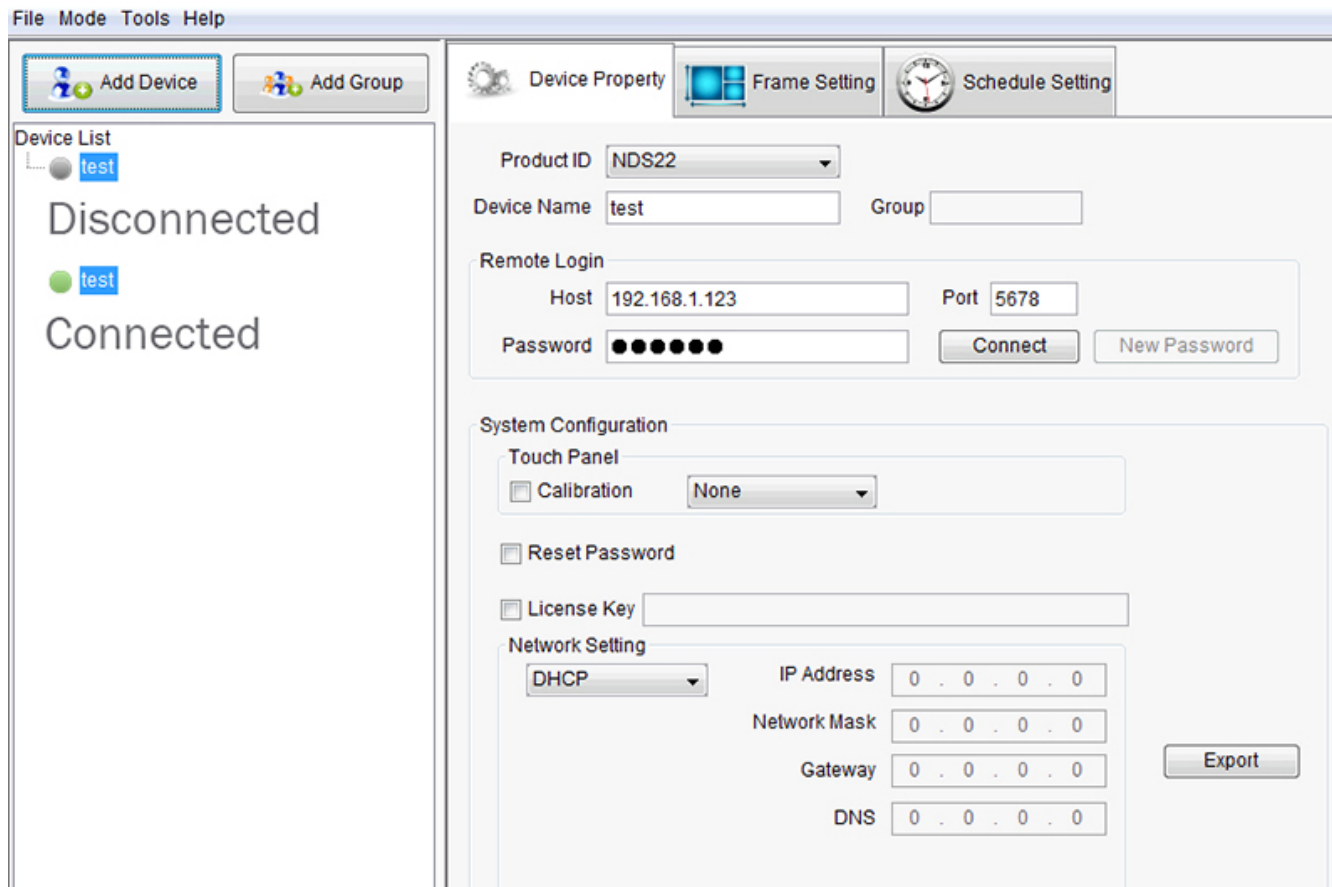
Gateway 0 . 0 . 0 . 0

DNS 0 . 0 . 0 . 0

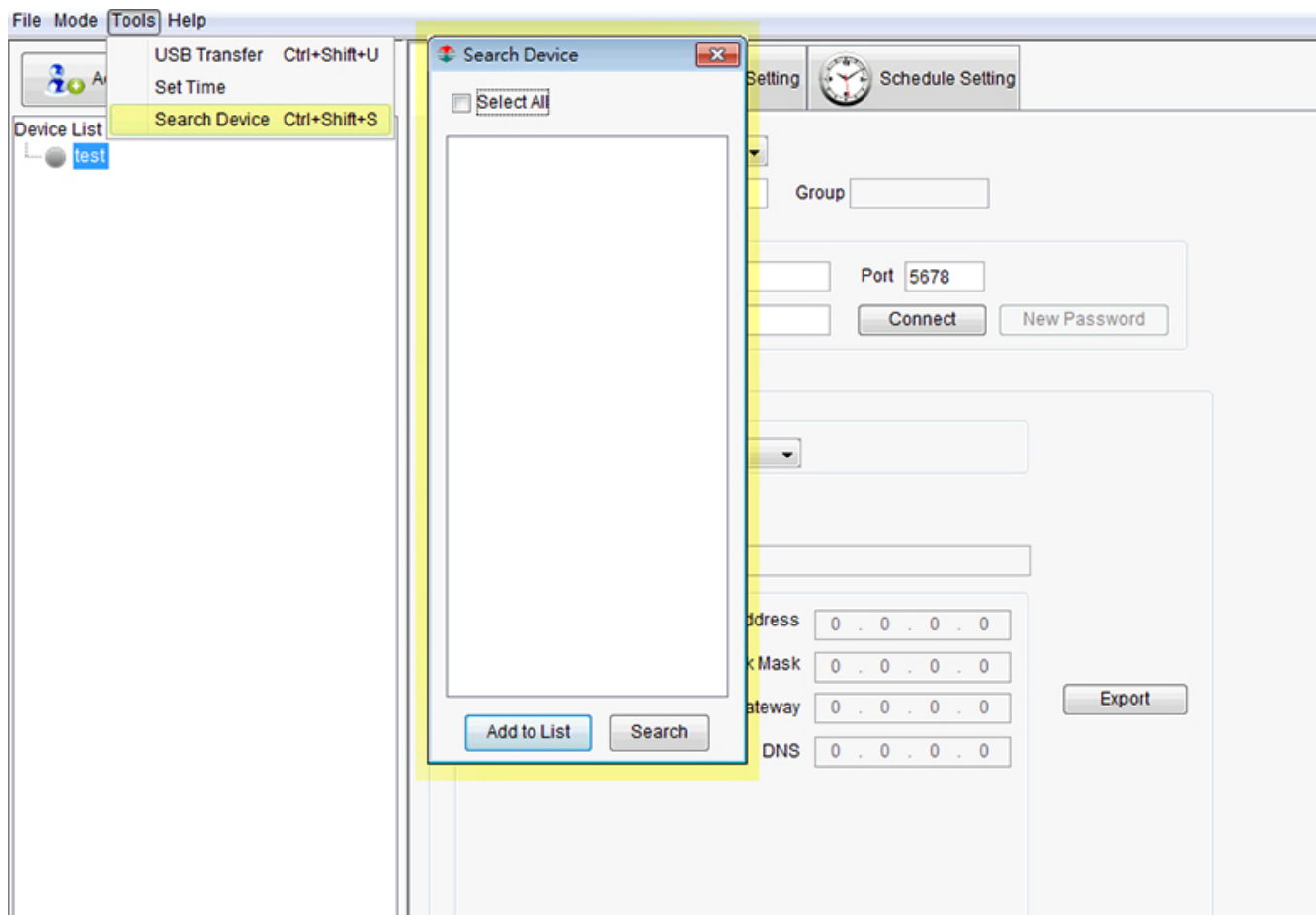
Export

3. Click Export button → Save the export file in to Micro SD card → plug micro SD card into NDS22 player → The device will tag the network setting information automatically. Finally, you can upload contents and schedule setting.

4. If the user network has supported DHCP. The user could select DHCP in the network setting. Click Export button directly→ Save the export file in to Micro SD card → plug micro SD card into NDS22 → The device will tag the network setting information automatically. Finally, you can upload contents and schedule setting.



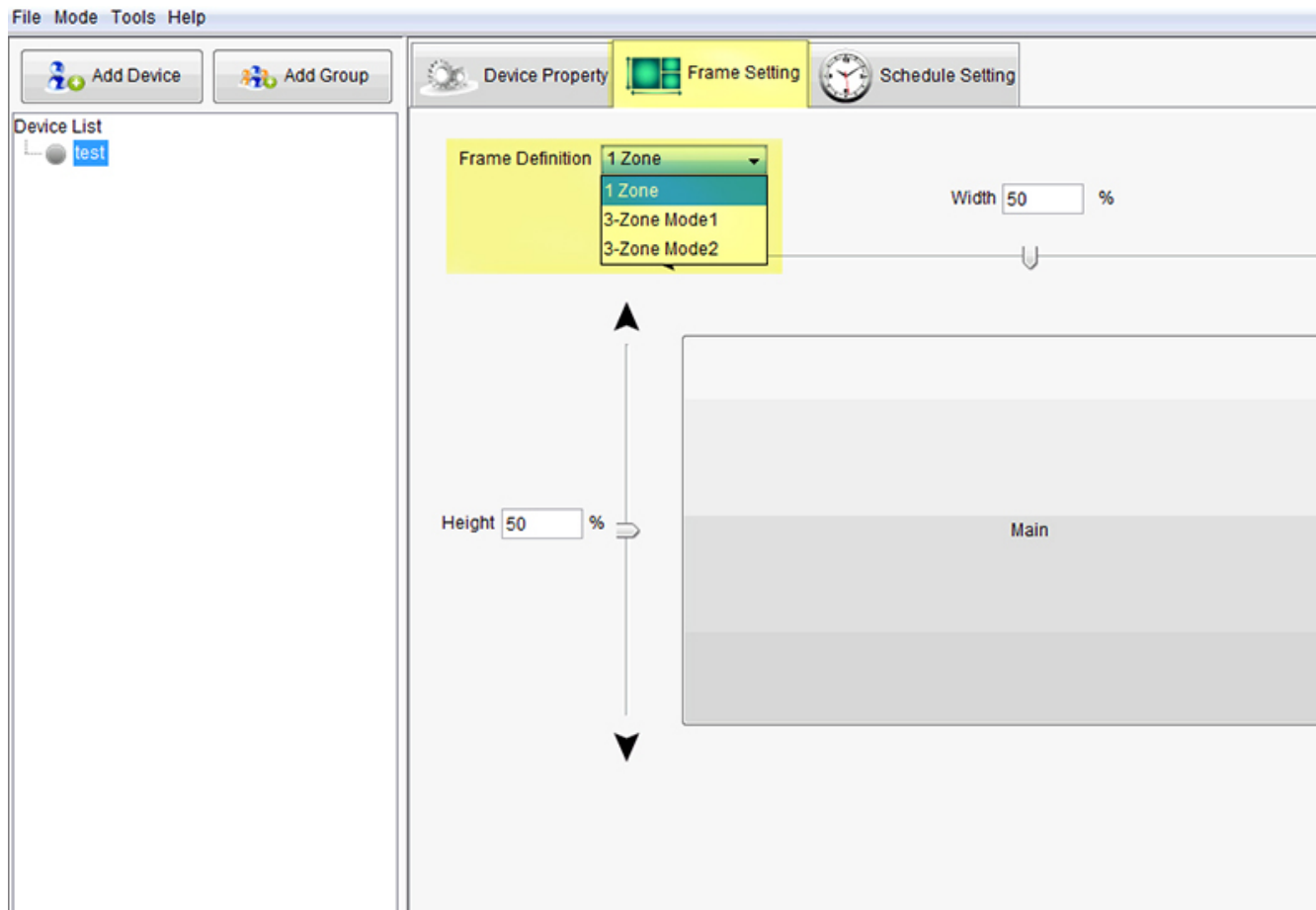
Device connection status ICON:



## Creating Device

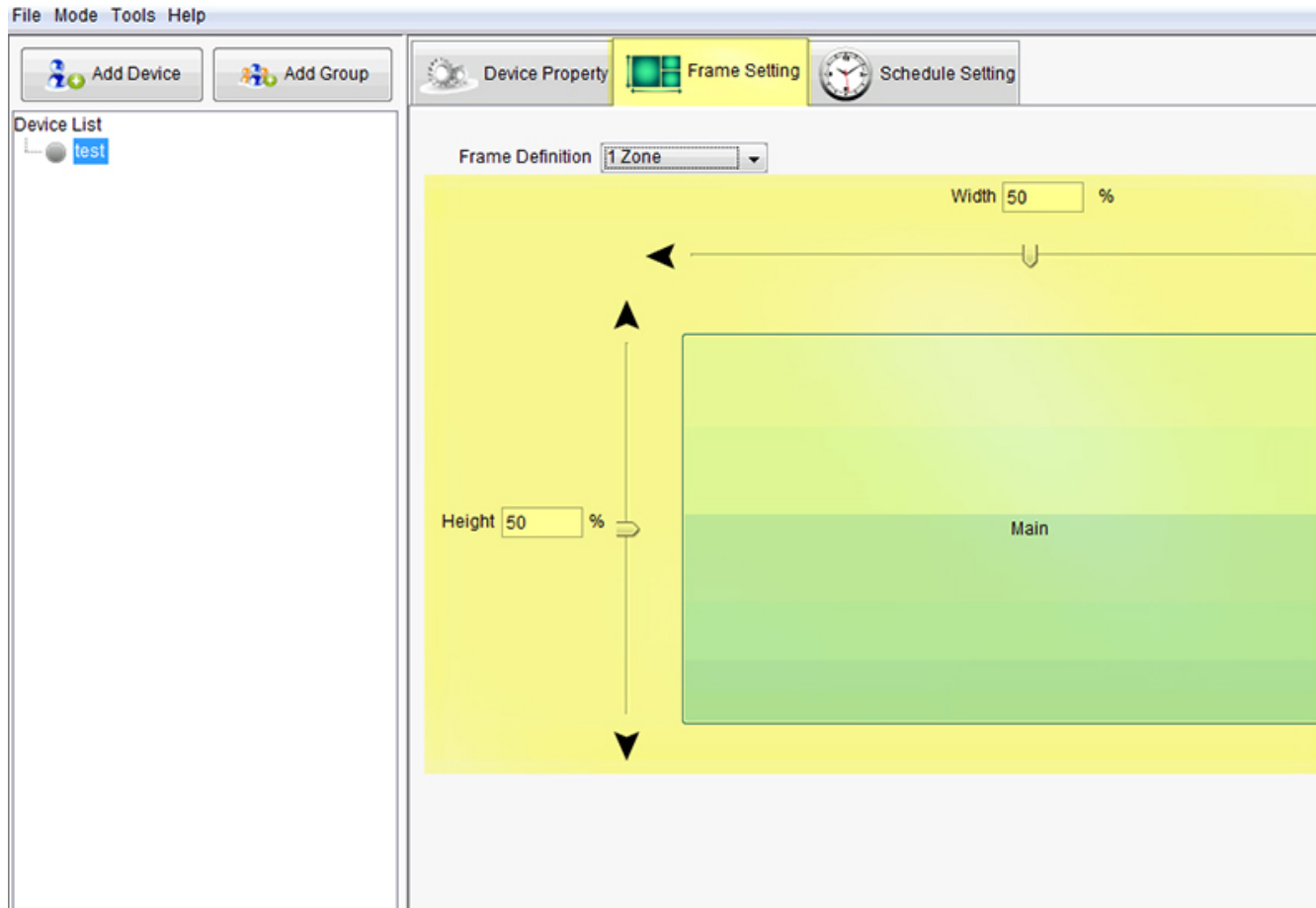
- In the local LAN, you are able to search device function to find available device. Tool Bar --- Tools --- Search Device
- The available device will list on the dialog box. You can select all or select one of the lists.





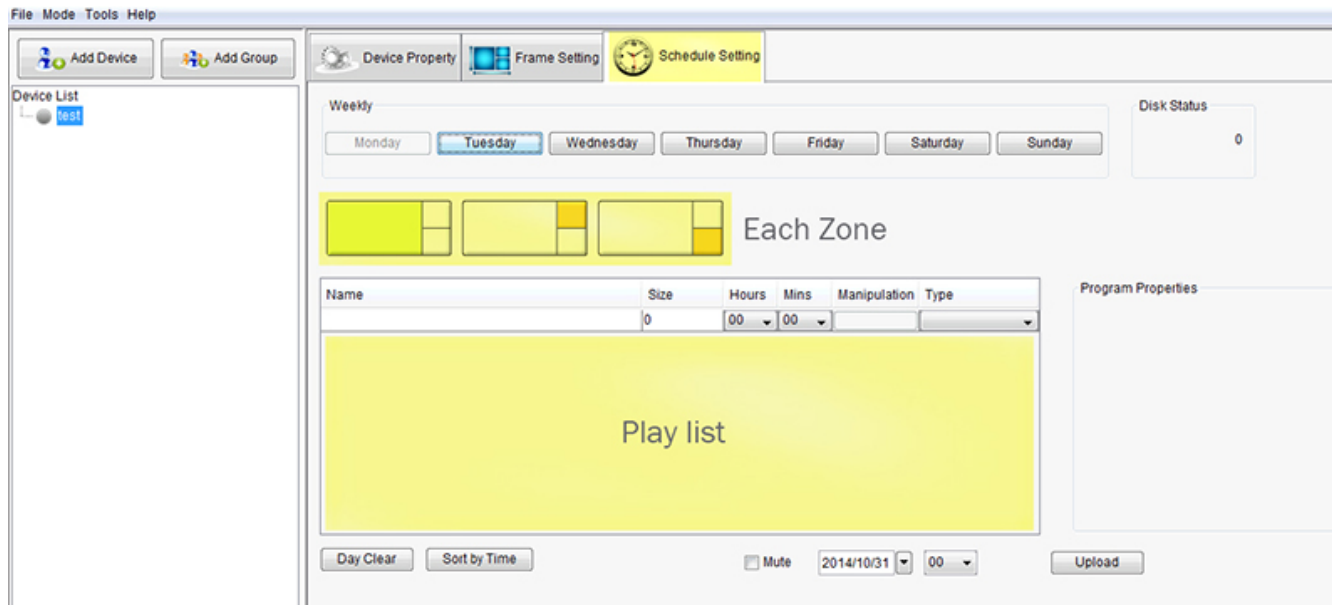
## Create Layouts

- Frame setting screen and choose 1 Zone or 3 Zone.



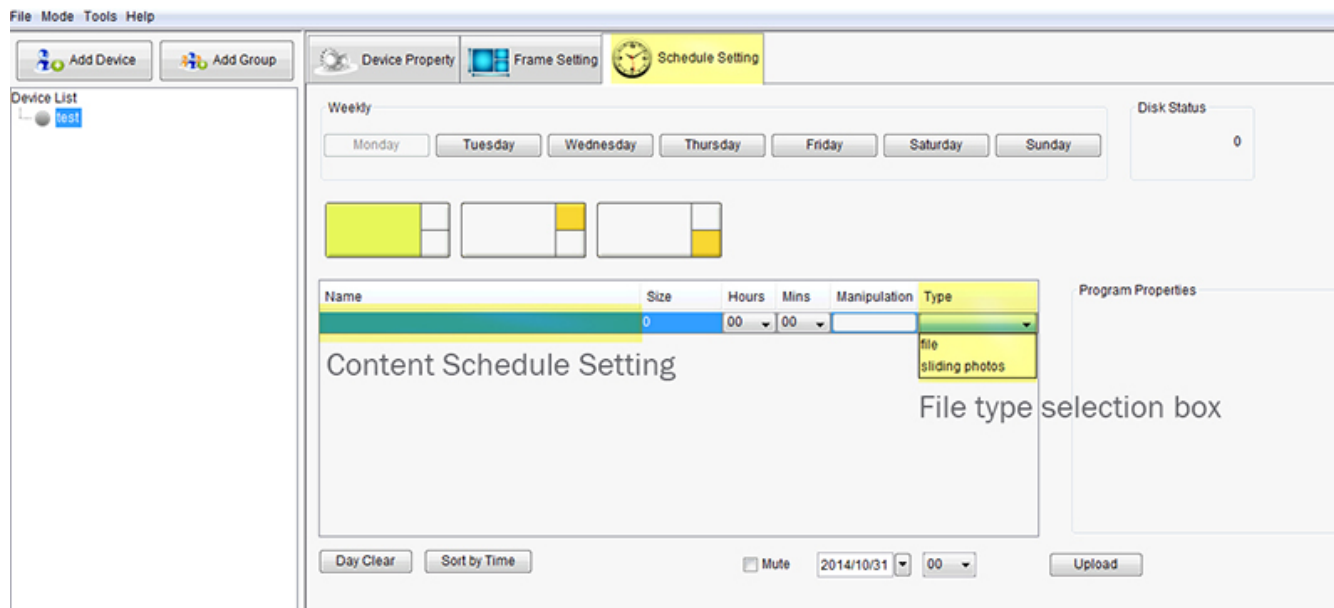
## Creating Device

- Adjustable Width / Height: Either input numeral of percentage or click scrollbars.

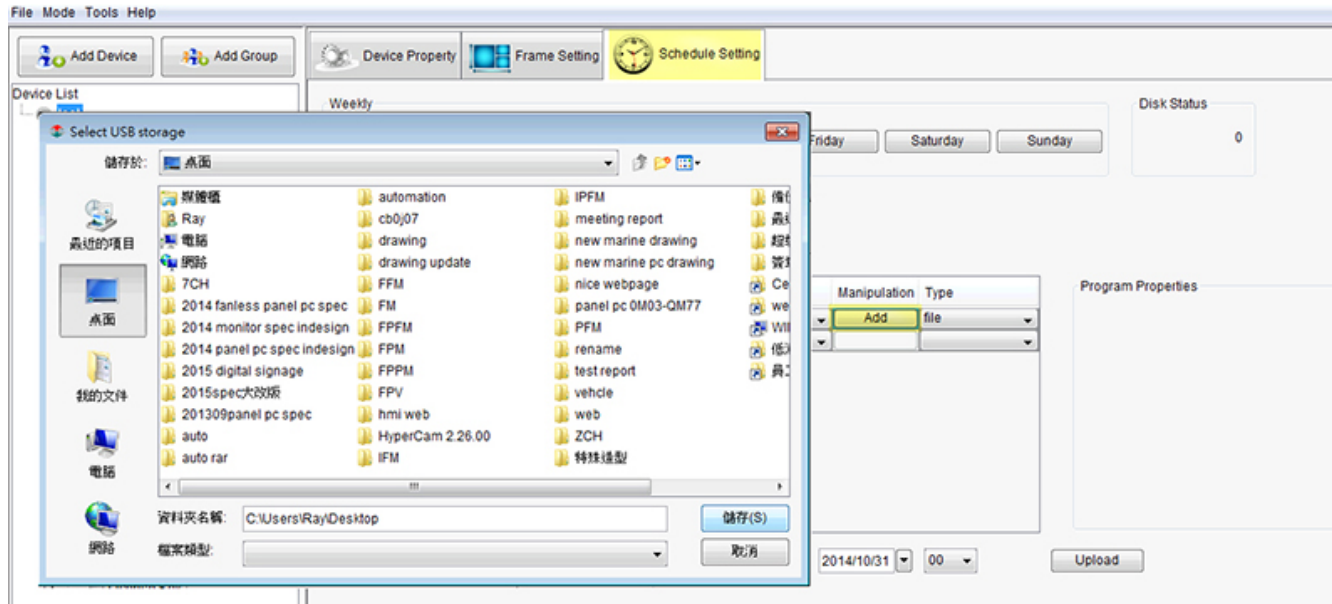


## Schedule Setting

- Setting order : Select Date of Week -> Select Zone -> Set up playlist



- Set up a weekly schedule. The user can be required to set up a weekly schedule and upload at once. Select scroll box to set up broadcast on the content schedule setting. The first scroll box is setting the hour. The second scroll box is setting the minute. Click “File type selection box” to select content type; then the file name and file size will list on the schedule list.



- File Type has four types, image / video / sliding photo / web page. The type of image & video allow sending files to the playlist.

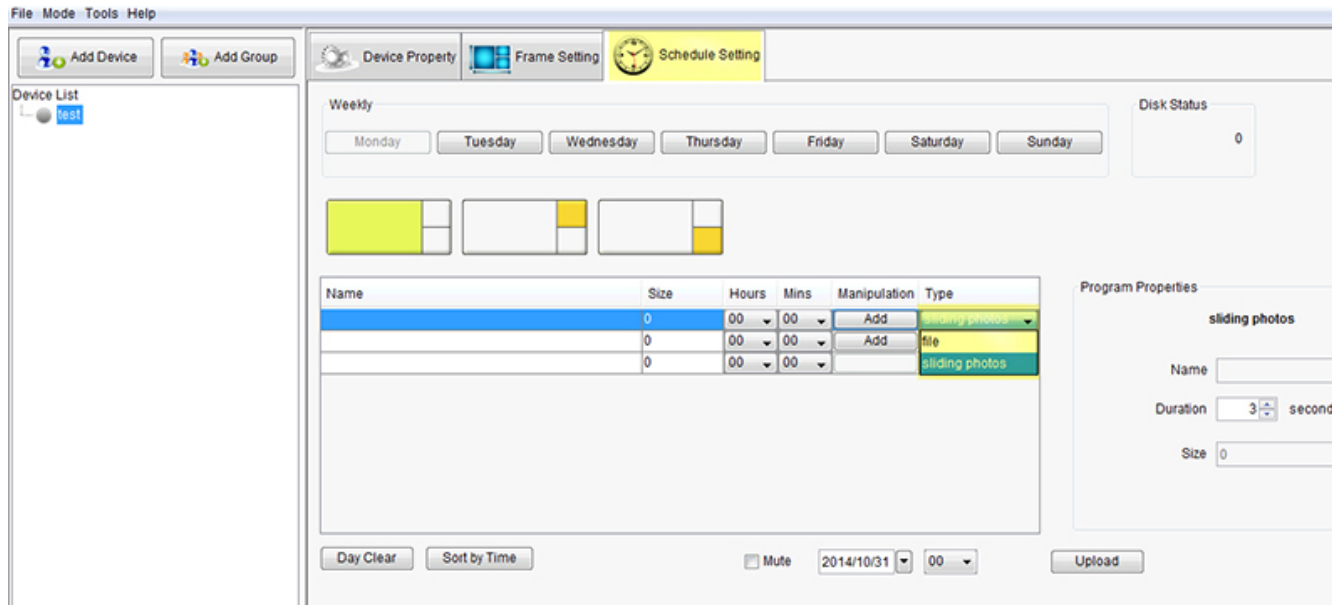
## Clock Setting

Please set up time zone for player, before sending contents

1. Require USB Keyboard & Mouse
2. "Ctrl+T" will call the time zone setting.
3. The player's monitor screen will shows "Time & Date" selections.
4. Adjust the Time & Date by your mouse or keyboard then Click "OK" button return to signage.

# Rolling Message

1. Click device twice, the Scrolling Message Screen will pop out.
2. Input the text in the text box and then Click Send button.
3. Click check box of Left or Right for the scrolling direction.



## Sliding Photo

- Sliding Photo type: Select Sliding photos then click "Add" button