

# EPMW1210 Check Backlight Inverter Instruction



i-Tech Company LLC

TOLL FREE: (888) 483-2418 • EMAIL: [info@itechlcd.com](mailto:info@itechlcd.com) • WEB: [www.iTechLCD.com](http://www.iTechLCD.com)

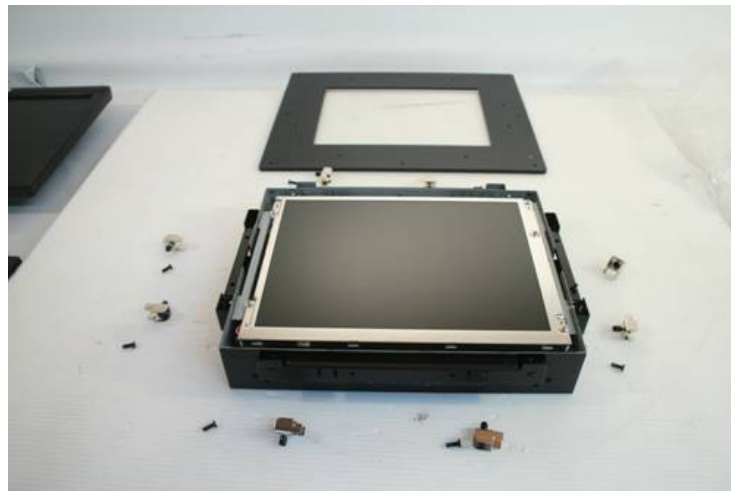
Step 1- remove all Clamp/VESA Mount brackets..



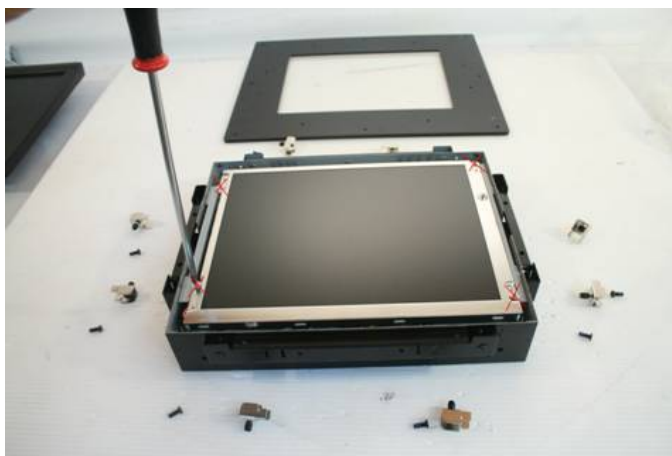
Step 2 - unscrew all around the unit mark down with red color X, see below pictures for details.



Step 3 - after remove all screws you will be able to remove the front bezel. See bellow pictures for details.



Step 4 - remove 4 screws mark down with red color X, this 4 screws holding LCD panel. See bellow pictures for details.



Step 5.- lift up the LCD panel, to access to internal components of the unit.  
please help us to check all internal connections, inverter board connection, LVDS cable connection to LCD panel, LVDS connection to AtoD board, If everything look fine but still the same issue, we may have to replace the inverter controller board, but please also help to check is when you turn up the unit do you see any backlight on the screen or is completely back screen all the time.

