

True FLAT Touch Display LCD Monitor

User Manual

Installation Guide



10.4" True FLAT Touch LCD Monitor (USB Interface)

MODEL: KKF1040B-TR



i-Tech Company LLC

TOLL FREE: (888) 483-2418

EMAIL: info@itechlcd.com

WEB: www.iTechLCD.com

User Manual / Installation Guide

10.4" True Flat Monitor (USB interface)

Warning! It will cause malfunction if the monitor is operating with incorrect power voltage. Do not expose this unit in the rain or moisture environment to reduce the risk of fire or electric shock.

Contents

I. FCC Warning Statement.....	2
II. Introduction.....	3
Features.....	3
Unpacking the monitor.....	3
III. Installation.....	4
I/O placement.....	4
Control Buttons.....	4
Touch Driver installation.....	5
IV. Installation Guide.....	7
V. Troubleshooting.....	15
VI. Mechanical dimension.....	17
VII. Product General Specification.....	18



I. FCC Warning Statement

WARNING

Note: This equipment has been tested and found to comply with the limits for a Class A digital device, pursuant to Part 15 of FCC Rules. These limits are designed to provide reasonable protection against harmful interference in a residential installation. This equipment generates, uses and can radiate radio frequency energy and, if not installed and used in accordance with the instruction, may cause harmful interference to radio communications. However, there is no guarantee that interference will not occur in a particular installation. If this equipment does cause harmful interference to radio or television reception, which can be determined by turning the equipment off and on, the user is encouraged to try to correct the interference by one or more of the following measures:

- Reorient or relocate the receiving antenna.
- Increase the separation between the equipment and receiver.
- Connect the equipment into an outlet on a circuit different from that to which the receiver is connected.
- Consult the dealer or an experienced radio/TV technician for help.

Notice:

- (1) An Unshielded-type power cord is required in order to meet FCC emission limits and also to prevent interference to the nearby radio and television reception. It is essential that only the supplied power cords are used.*
- (2) Use only shielded cables to connect I/O devices to this equipment.*
- (3) Changes or modifications not expressly approved by the party responsible for compliance could void the user's authority to operate the equipment.*

II. Introduction

The 10.4" True Flat Monitor is color TFT LCD monitors, with compact and ecological design. The power consumption is only 2.5W with LED backlight.

Features

- Optimal display resolution 800 * 600
- No ventilation hole design
- Light weight, only 800g physically for 10.4" True Flat Monitor.
- VESA 75 * 75 mm wall mount standard
- Integrate with resistive touch

Unpacking the monitor

- Put the monitor on a clean surface; make sure the box in upright position.
- Remove packing materials from inside of box.

Check accessory

Please make sure the entire accessories are included:

1. LCD Monitor
2. USB Cable (for Touch model *2)
3. Driver CD



or

1



2



3

III. Installation

I/O placement

PC



USB Monitor



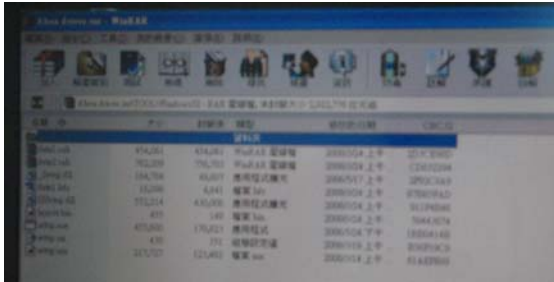
USB Cable

Control Buttons

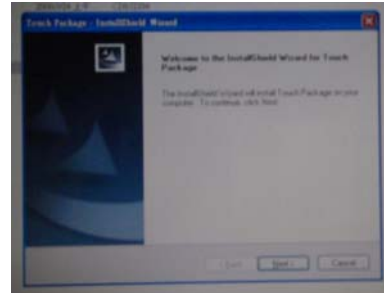


▲ UP / ▼DOWN key : When adjustment item is selected, the two keys are defined to decrease or increase the value of brightness.

Touch Driver installation (for Touch model only)



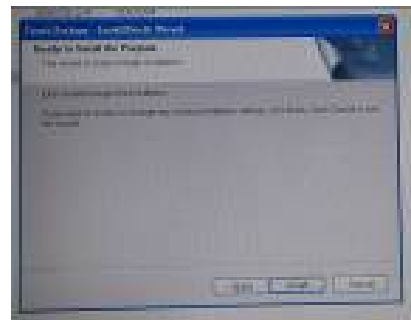
1. Double click "setup.exe" from driver menu



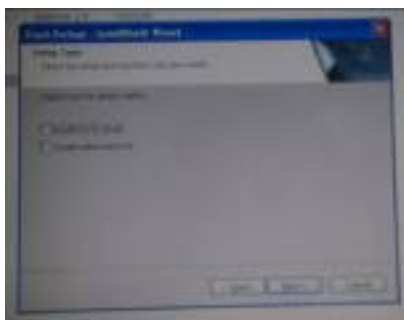
2. Click "next" from welcome window



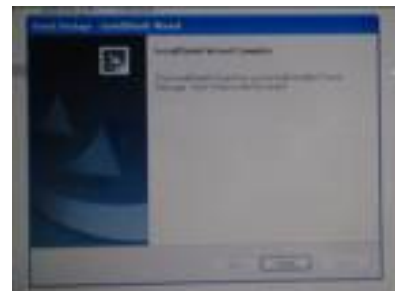
3. Click "next" from choose destination location window



4. Click "next" from ready to install the program



5. Click "next" from setup type

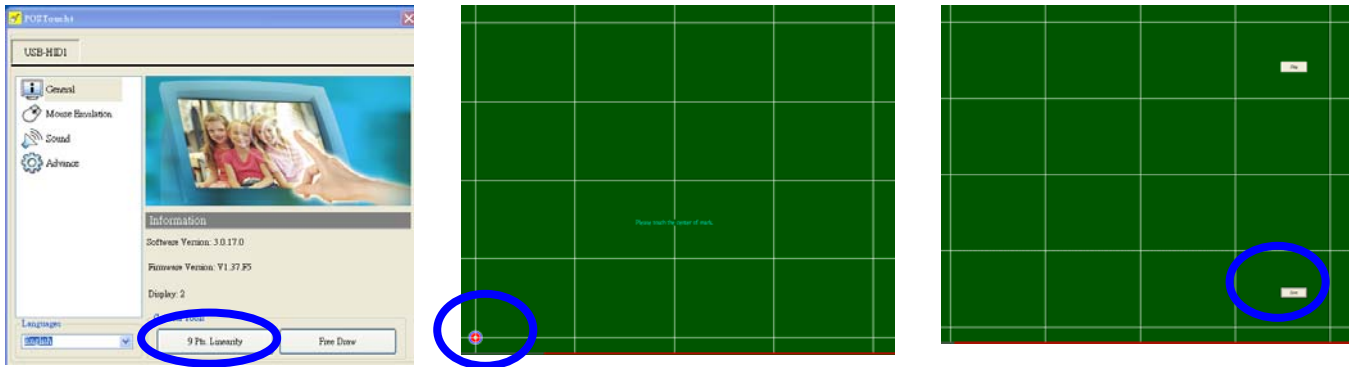


6. Click "finish" when setup completed

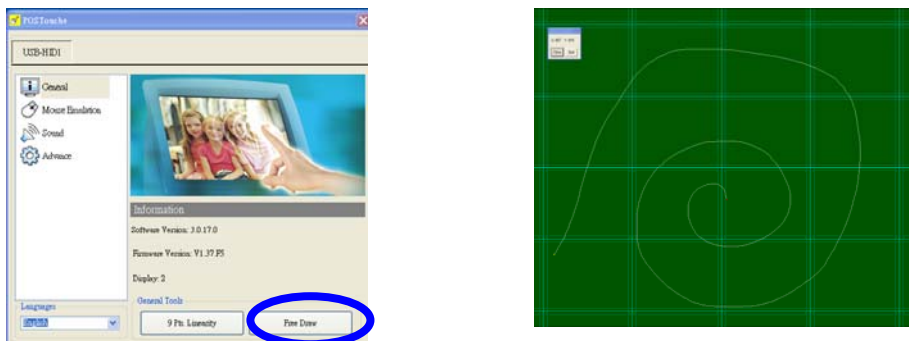
Calibration procedures:



1. Double click "POS Touch+" icon to run calibration function



2. Follow 9 points linearity calibration procedures and save the data



3. Follow free draw calibration
4. Exit calibration menu
5. Reboot PC

IV. Installation Guide

PC requirements

USB Monitor software can be used on PCs, from Netbooks, Notebooks/Laptops to Desktops. The driver will run on processors ranging from Atom N270 based PCs, basic single Core CPUs, and of course the latest Dual, Quad Core and Core i3/i5/i7 CPUs.

The performance of the software is dependent upon the processing power available, as well as the Operating system in use. More capable systems offer higher performance.

DisplayLink software is available for PCs running one of the following Windows Operating Systems:

- Windows 7 (32-bit or 64-bit)
- Windows Vista with Service Pack 1 or 2 (32-bit or 64-bit)
- Windows XP Home or Professional (including Tablet edition) with Service Pack 2 or 3
- Windows 2000 with Service Pack 4

Note: 64-bit editions of XP are not supported. No Windows Server editions are supported. Mac OS X support can be found at <http://www.displaylink.com/mac>

Recommended typical system requirements are:

Windows 7 / Windows Vista

For Windows 7, the Windows Experience Index (WEI) is a useful measure of hardware level. The WEI is accessible from Computer > Properties, or from Control Panel > System.

The recommended typical hardware requirements for the PC are:

- WEI score of at least 3 in the 'Graphics; Desktop performance for Windows Aero' category.
- Overall WEI score of at least 3 as recommended by Microsoft.
- At least one USB 2.0 port.
- 30 MB of free disk space.
- Computer screen for use with the DisplayLink device, if it is not integrated.
- Network access for software downloads, or access to a CD-ROM drive.

If the PC specification is below this, performance will be lower (or CPU loading higher than acceptable).

Windows XP/2000

- For 1-2 monitors, business usage, productivity target. This may not provide full frame rate DVD playback at full screen.
 - 1.2 GHz Single Core CPU
 - 512 MB RAM
- For 3 monitors where 1 could run DVD video while also targeting productivity and business apps. Will support only 1 video of DVD resolution at full screen:
 - 1.6 GHz Single Core CPU
 - 1 GB RAM

- For 6 screens where 1 screen can run full screen DVD video:
 - 1.8 GHz Core Duo
 - 1 GB RAM
- At least one USB 2.0 port
- 30 MB of free disk space
- Computer Screen for use with the the DisplayLink device, if it is not integrated
- Network Access for software downloads, or access to a CD-ROM drive

Graphics Card Support (Windows Vista/Windows 7)

On Windows Vista and Windows 7, DisplayLink software interacts closely with the primary graphics card. DisplayLink support and test a single graphics card (GPU) installed in a PC. All major GPU vendors Intel, AMD, NVidia and VIA are supported.

Issues may be found with PCs with multiple graphics cards, or other graphics card combinations, and DisplayLink software. The following documents the combinations of testing and known configuration support.

Vista/Windows 7 on version 5.2

Switchable Graphics (AMD/Intel)

- Untested on Vista may be used at user's own risk
- On Windows 7 unsupported

Hybrid Graphics / Hybrid SLi / Hybrid Crossfire

- Unsupported

SLi machine in SLi mode:

- Untested on Vista may be used at user's own risk
- On Windows 7 unsupported

SLi machine in non-SLi mode (i.e. with 2 or more identical GPUs):

- Unsupported

Crossfire

- Unsupported

Other machines with 2 GPUs where only 1 is active at once – reboot needed to switch

- Supported

Graphics Card Support (Windows 2000/XP)

All graphics cards are supported on Windows 2000/XP.

Supported Languages

The following languages are supported in version 5.2, on all supported operating systems:

- Arabic
- Bahasa Indonesian
- Bulgarian
- Chinese (Traditional)
- Chinese (Simplified)
- Croatian
- Czech
- Danish
- Dutch
- English
- Finnish
- French
- Greek
- German
- Hungarian
- Italian
- Japanese
- Korean
- Norwegian
- Polish
- Portuguese
- Russian
- Slovak
- Slovenian
- Spanish
- Swedish
- Turkish

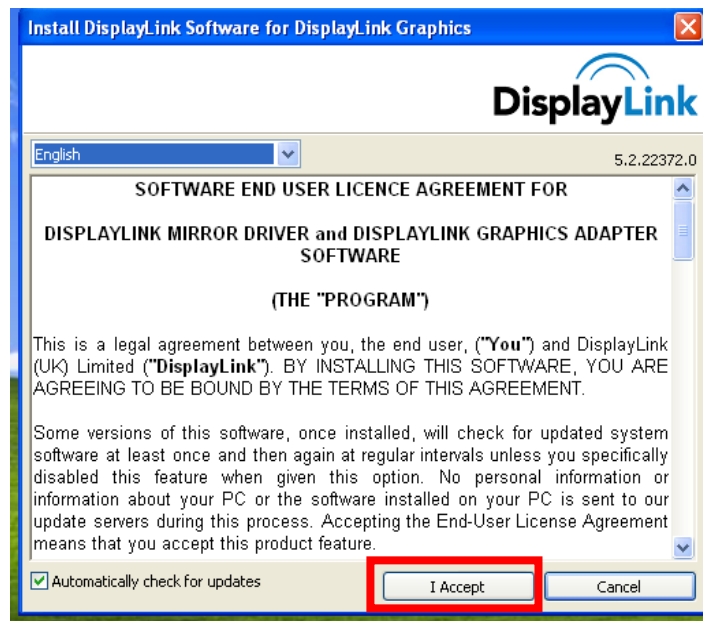
For unsupported languages the default language is English.

Installing the USB Monitor Software

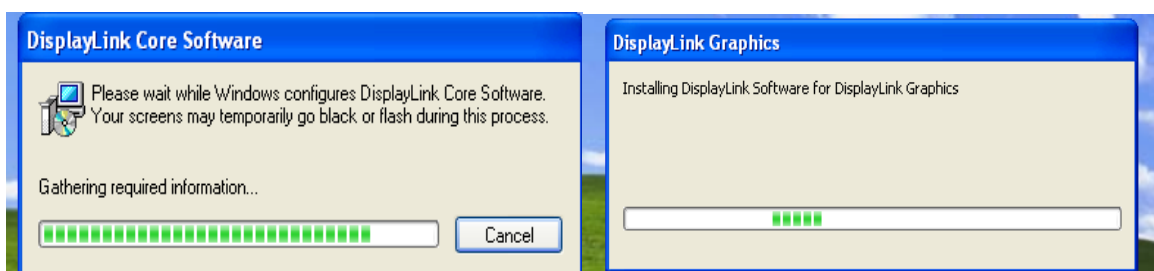
- Make sure to connect the USB cable and begin the installation after your PC has booted.
- The Setup program requires about one minute for the installation. If you turn the power off or remove the USB cable while the Setup program is running, it may cause an error with the PC or the Windows operating system.
- The optimal resolution for this USB monitor is 800x600.

1. Insert CD into the CD-ROM drive. Click "USB Monitor Driver"

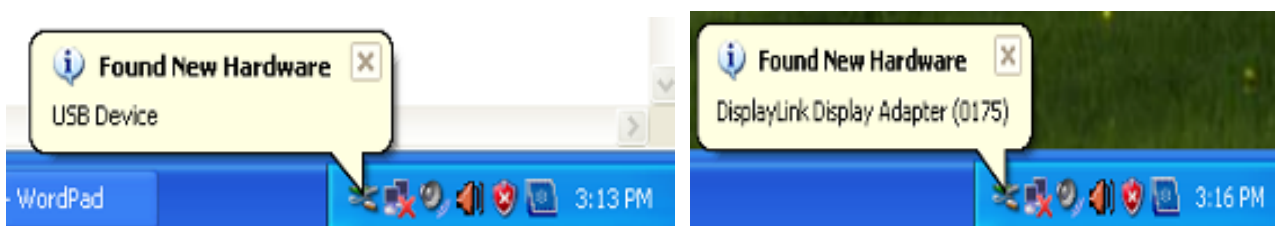
2. Click "I Accept".



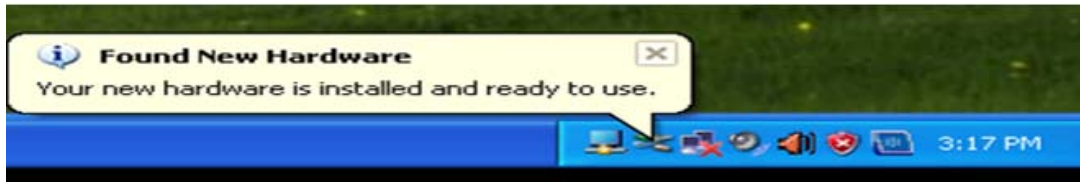
3. The progress window appears, as shown in the figure below.



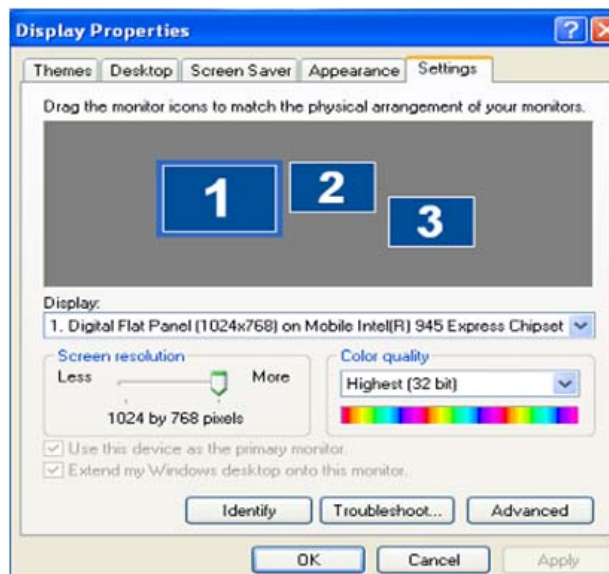
4. If you connect your USB monitor to your PC, it recognizes the monitor and the "Found New Hardware" wizard is displayed, as shown in the figure below.



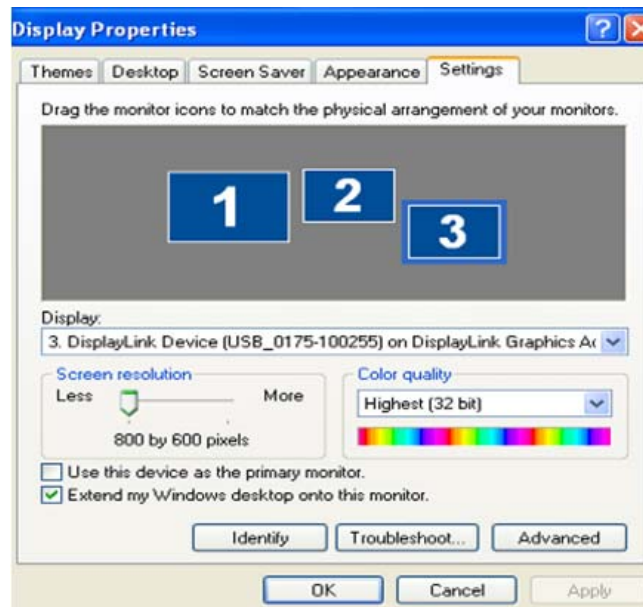
When setup is finished, a monitor icon is created in the system tray at the bottom of the monitor screen, and the information for the installed USB monitor is displayed.



5. When the installation is completed, configure the following settings to use multiple monitors.
 - (1). Right-click on the "Windows Desktop" and select "Properties" from the displayed menu. The "Display Properties" window appears.
 - (2). Select the "Settings" tab. A list of connected USB monitors is displayed.



- (3). Arrange the monitors displayed in the 'Display Properties' window in the order they are actually used.



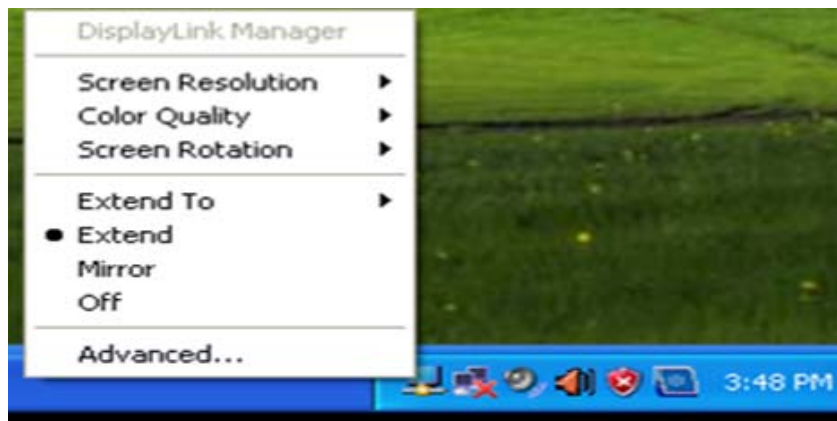
- (4). Then click "OK" button.

Configuring the USB Monitor Display Information

1. When the driver setup for the USB monitor is finished, a monitor icon is created in the system tray at the bottom of the monitor screen.



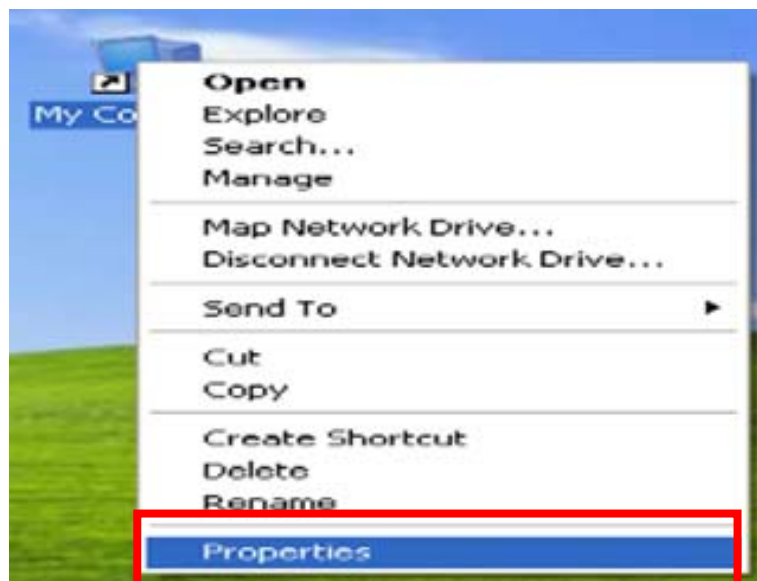
2. Click the monitor icon to display a list of connected USB monitors. Select the monitor for which you want to configure the display settings. You can configure the "Screen Resolution" , "Color Quality" and "Screen Rotation" settings for your monitor.



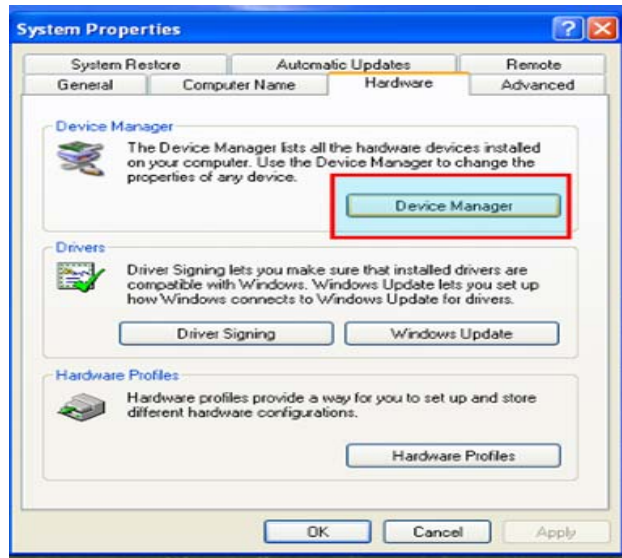
Checking the configuration

After the installation, you can check the configuration by following these steps.

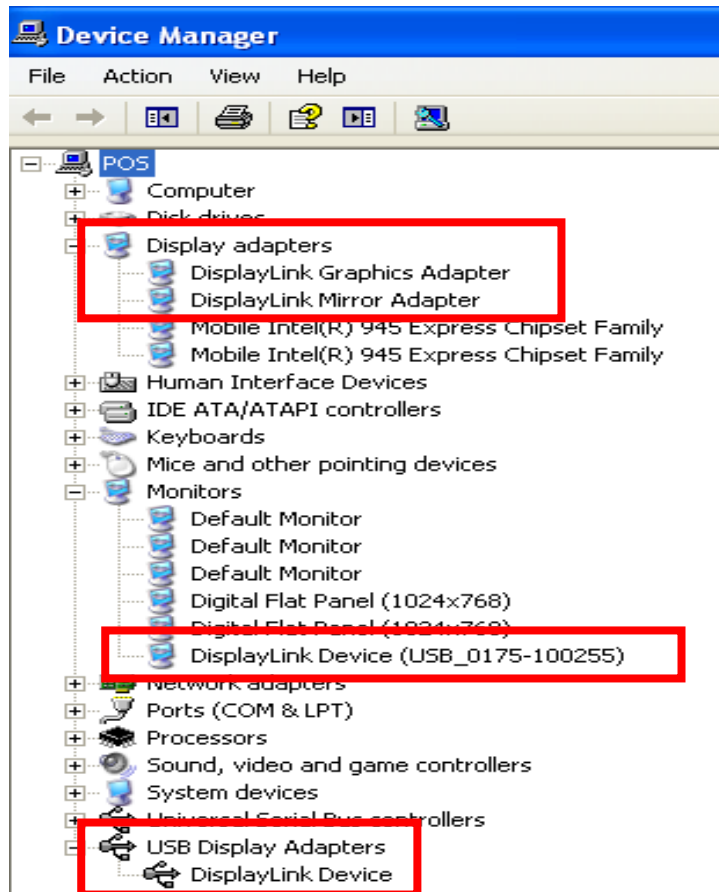
1. Right-click "My Computer", and select "Properties" - "System Properties" - the "Hardware tab".



2. Click “Device Manager”.



3. A list of the installed device will be displayed, as shown in the figure below.



- The Initial Screen Settings after Installing the Program

- Applicable mode: Extend mode
- Mode position: To the right of the primary screen
- Mode rotation: 0°

Restrictions on the USB Monitor

Supported OS (Operating Systems)

- Windows XP
 - Service Pack 1 or earlier: Unsupported
 - Service Pack 2 or later: Supported
- Windows 2000
 - Service Pack 3 or earlier: Not Supported
 - Service Pack 4 or later: Supported
- Windows Server 2003: Not Supported

- Windows Vista: Supported.

To check the information on the operating system of your PC, right-click “My Computer” on the “Windows Desktop” and select “Properties” from the displayed menu. Check the information in the “General” tab of the “Computer Properties” window.

1. Because this USB monitor is recognized as a USB device, the DOS screen that appears for general monitors when a PC is booting up is not displayed.
2. You cannot use the USB monitor for software using 3D hardware acceleration.
 - Real Player (Expansion mode is not supported.)
 - For most 3D games
 - Programs running on the base of Direct X
3. Supported movie programs
 - Power DVD
 - Win DVD (Version 5 onwards)
 - Windows Media Player (Version 10 or later is supported.)
 - VLC
4. This monitor does not support the MagicTune program.
 - The MagicRotation function may not function normally.
 - If the MagicTune program is installed on your PC, it may not be compatible with this monitor.
5. The USB monitor may not work normally with USB 1.0.
6. If the graphics card of your PC does not support WDDM, the extended mode may not be available in Windows Vista.
(Example) Some versions of Matrox Cards

V. Troubleshooting

Check List

Note

Before calling for assistance, check the information in this section to see if you can remedy any problems yourself. If you do need assistance, please call the phone number on the In-formation section or contact your dealer.

There is no image on the screen. I cannot turn on the monitor.

- Q: Check whether the USB cable is connected correctly. Check whether the USB driver is installed.
- A: The USB monitor is recognized as a general USB device on a PC. If you turn the monitor on or off quickly and repeatedly, a USB device problem may occur. Refer to the USB device Troubleshooting section on the Microsoft customer support website.
1. Right-click the “My Computer” and click on “Properties”
 2. The Device Manager is displayed.
 3. From the “Action” menu, click “Scan for hardware changes”. Reboot your PC.

The screen of the USB monitor freezes.

- Q: Check the “Hardware acceleration” setting for your USB monitor in the “Display Properties” window.
- A: Set the “Hardware acceleration” value to “Full”.
- For more information on how to configure the settings, click here.
1. Right-click the “Windows Desktop” and click on “Properties”.
 2. The “Display Properties” window appears.
Select the “Settings” tab and click on “Advanced”.
 3. If the “Properties” window for your monitor is displayed, select the “Troubleshoot” tab.
Move the “Hardware acceleration” slide to “Full”.

My USB monitor is connected but the screen is blank.

- Q: Does the Auto Installation program run when your USB monitor is connected?
- A: Install the "USB Monitor Driver" from the provided CD. For more information on how to install the driver, refer to "Installation and Installation Guide".

I have connected the USB monitor but it does not boot up...

- Q: For the One-Board Type computer which uses an i815 chipset motherboard, change the Legacy USB support option to [Disabled] in the BIOS Setup menu and reboot the computer.
- A: (Example) Phoenix BIOS
- If you turn on the computer, the “Press F2” to enter SETUP” message is displayed on the bottom of the screen. Press [F2] to display the BIOS Setup menu.

Q & A

Q: How I can clone or extend screen mode?

A: Open the “Display Properties” window and select the “Settings” tab,

Q: How can I remove the “USB Monitor Installation Program” completely?

A: Click “Add/Remove Programs” in the “Control Panel”. A list of “currently installed programs” is displayed.

Select “DisplayLink Graphics” from the list and click “Remove”.

Q: The screen size of the USB monitor is larger than the actual monitor size.

A: If the primary monitor has a high resolution, screens are expanded beyond the recommended resolution in Clone mode (USB monitor).

Q: The screen size of the USB monitor is smaller than the actual monitor size. The screen is centered on the monitor.

A: If the primary monitor has a high resolution, screens are smaller than the recommended resolution in Clone mode (USB monitor).

Q: I disconnected or turned off my USB monitor but my PC still displays the old monitor information in the Display Properties window.

A: The deactivated USB monitors are such that the power to them is turned off or their USB cables are disconnected. To remove this information, you have to remove the “DisplayLink Graphics” program from “Add/Remove Programs” in the “Control Panel”.

If you remove the program you cannot use all the connected USB monitors.

If you want to use the USB monitor again, you have to setup the installation program again.

Q: Icons and photos are broken or jagged in Clone mode (USB monitor).

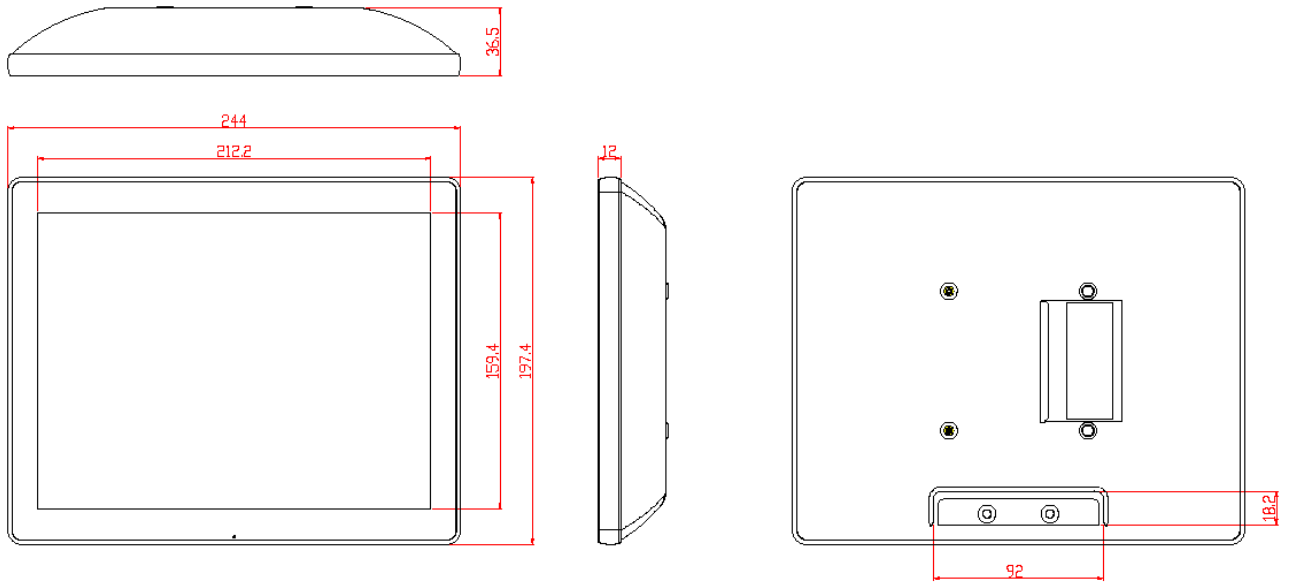
A: This occurs because Windows does not send the screen updating information to Clone mode if Extended mode is active on a single PC.

We recommend using the monitor in Extend mode.

Note

Before calling for assistance, check the information in this section to see if you can remedy any problems yourself. If you do need assistance, please call the phone number on the Information section or contact your dealer.

VI. Mechanical dimension



VII. Product General Specification

Model	Monitor	Monitor with stand	Touch Monitor	Touch Monitor with stand
Cabinet color	Black			
Display size	10.4"			
Active Area	211.2 * 158.4 mm			
Optimal Resolution	800 * 600			
Color Arrangement	RGB-stripe			
Brightness (Panel)	300 cd/m ² (typ)			
Contrast Ratio	500:1			
Response Time	30 ms (typ)			
Viewing Angle	150 degrees (H) 110 degrees (V)			
Input Video Format	USB			
Touch Panel	NA		USB Interface 5 Wires TWN Resistive	
Input Video signal connector	USB B-Type		USB B-Type*2	
Power consumption	500mA/2.5W		500mA/3.5W	
Power supply	DC 5V +/- 5 %			
Temperature	Operating : 0°C ~40°C Storage : -10°C ~50°C			
Humidity	Operating : 20%~80% Storage : 10%~90%			
Weight	0.8kg(net)	1.4kg(net)	1.0kg(net)	1.6kg(net)
Approvals	CE, FCC			
Wall Mount	VESA 75 * 75 mm			