

True FLAT Display LCD Monitor

User Manual

Installation Guide



10.4" True FLAT LCD Monitor (VGA Interface)

MODEL: KKF1040V



i-Tech Company LLC

TOLL FREE: (888) 483-2418

EMAIL: info@itechlcd.com

WEB: www.iTechLCD.com

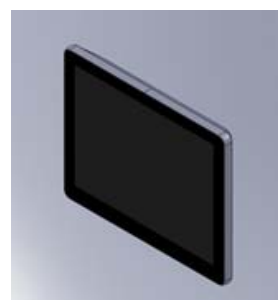
User Manual / Installation Guide

10.4" True Flat Monitor (VGA interface)

Warning! It will cause malfunction if the monitor is operating with unspecified power supply unit or incorrect power voltage. Do not exposure this unit in the rain or moisture environment to reduce the risk of fire or electric shock.

Contents

I. FCC Warning Statement.....	2
II. Introduction.....	3
Features.....	3
Unpacking the monitor	3
III. Installation	5
I/O placement.....	5
To PC	5
Touch Driver installation (for Touch model only)	6
Control Buttons.....	10
IV. For your safety	10
V. Support timing chart.....	11
VI. Mechanical dimension	11
VII. Product General Specification	12



I. FCC Warning Statement

WARNING

Note: This equipment has been tested and found to comply with the limits for a Class A digital device, pursuant to Part 15 of FCC Rules. These limits are designed to provide reasonable protection against harmful interference in a residential installation. This equipment generates, uses and can radiate radio frequency energy and, if not installed and used in accordance with the instruction, may cause harmful interference to radio communications. However, there is no guarantee that interference will not occur in a particular installation. If this equipment does cause harmful interference to radio or television reception, which can be determined by turning the equipment off and on, the user is encouraged to try to correct the interference by one or more of the following measures:

- Reorient or relocate the receiving antenna.
- Increase the separation between the equipment and receiver.
- Connect the equipment into an outlet on a circuit different from that to which the receiver is connected.
- Consult the dealer or an experienced radio/TV technician for help.

Notice:

- (1) An Unshielded-type power cord is required in order to meet FCC emission limits and also to prevent interference to the nearby radio and television reception. It is essential that only the supplied power cords are used.*
- (2) Use only shielded cables to connect I/O devices to this equipment.*
- (3) Changes or modifications not expressly approved by the party responsible for compliance could void the user's authority to operate the equipment.*

II. Introduction

The 10.4" True Flat Monitor is color TFT LCD monitors, with compact and ecological design.
The power consumption is only 6W with LED backlight.

Features

- Optimal display resolution 800 * 600
- No ventilation hole design
- Light weight, only 800g physically for 10.4" True Flat Monitor.
- VESA 75 * 75 mm wall mount standard
- Integrate with resistive touch

Unpacking the monitor

- Put the monitor on a clean surface; make sure the box in upright position.
- Remove packing materials from inside of box.

Check accessory

Please make sure all the accessory are included:

True Flat Monitor

a.



b.



c.



d.



a. LCD Monitor

b. Power adaptor

c. VGA cable (8 PIN Mini DIN cable)

d. User Manual CD

True Flat Monitor with stand

a.



b.



c.



d.



a. LCD Monitor

b. Power adaptor

c. VGA cable (8 PIN Mini DIN cable)

d. User Manual CD

True Flat Touch Monitor

a.



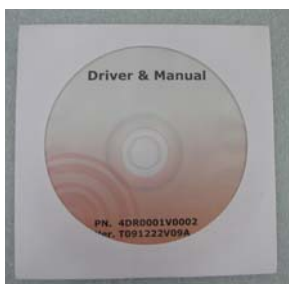
b.



c.



d.



e.



a. LCD Monitor

b. Power adaptor

c. VGA cable (8 PIN Mini DIN cable)

d. Touch driver / User Manual CD

e. USB Touch cable

III. Installation

I/O placement



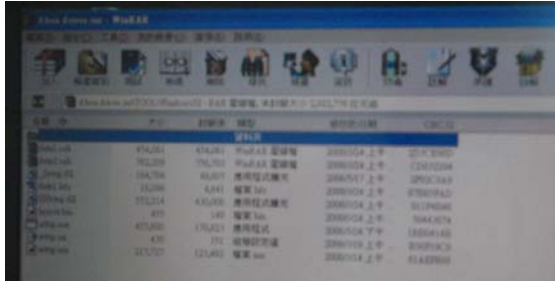
- | | | | |
|---|----------------------------------|---|----------|
| 1 | VGA (DIN Type) | 2 | DC Input |
| 3 | USB Input (for Touch model only) | | |

To PC

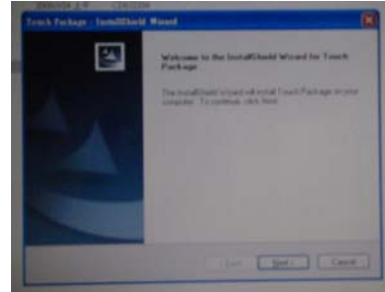


1. Connect VGA cable from monitor to PC
2. Connect USB touch cable to PC
3. Connect DC plug to monitor and the other side to wall outlet

Touch Driver installation (for Touch model only)



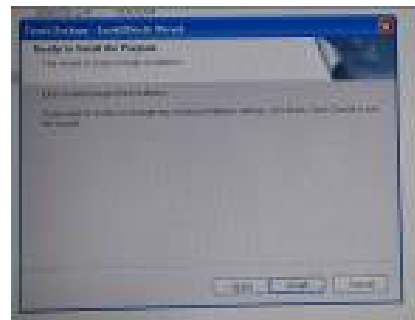
1. Double click "setup.exe" from driver menu



2. Click "next" from welcome window



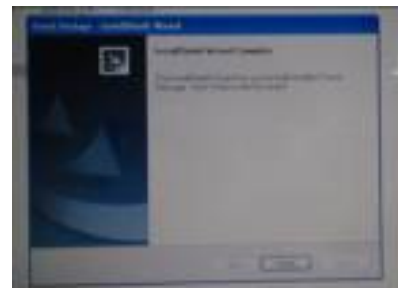
3. Click "next" from choose destination location window



4. Click "next" from ready to install the program



5. Click "next" from setup type

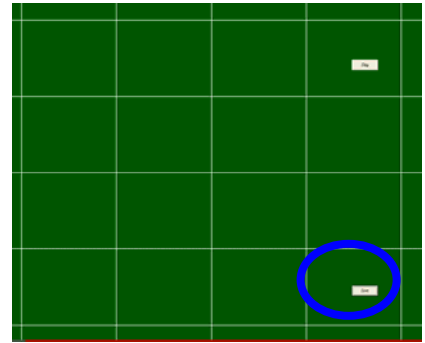
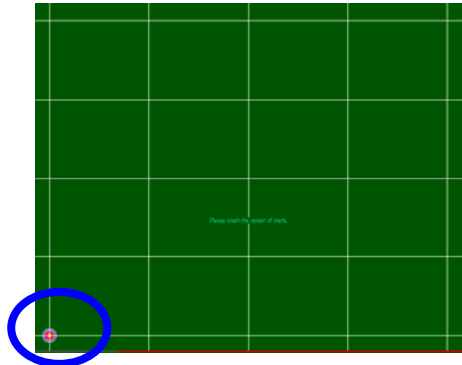
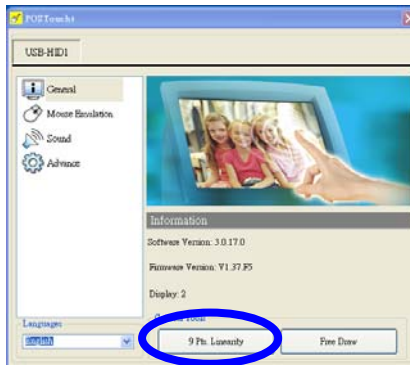


6. Click "finish" when setup completed

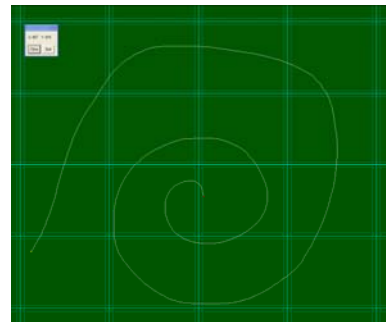
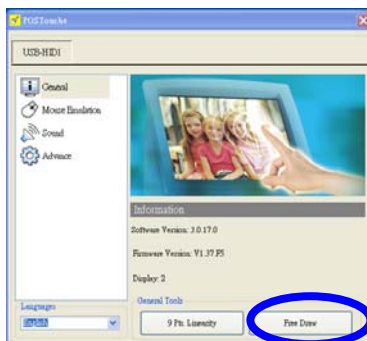
Calibration procedures:



1. Double click “POS Touch+” icon to run calibration function



2. Follow 9 points linearity calibration procedures and save the data



3. Follow free draw calibration
4. Exit calibration menu
5. Reboot PC

OSD settings

Main Menu	First Level	Second Level	Third Level	Operating Procedure
	Auto Adjust			Press “UP” or “DOWN” to adjust H-phase & H-position & V-position clock automatically.
	Luminance	Brightness Contrast Exit		Press “UP” key to increase brightness, “DOWN” key to decrease brightness. Press “UP” key to increase contrast, “DOWN” key to decrease contrast.
	Geometry	H. Position V. Position Clock Phase Exit		Press “UP” key to shift screen right, “DOWN” key to shift screen left. Press “UP” key to shift picture upward, “DOWN” key to shift picture downward. Adjust sampling clock of analog to digital converter until clock is equal to pixel frequency of video input. By varying this “UP” “DOWN” control the exact sampling time within the pixel can be adjusted.
	Color	9300K 6500K 5800K		Press “UP” or “DOWN” to choose three types of color temperature 9300°k, 6500°k and user define.
		User Preset	Red Green Blue Exit	
		Exit		
	OSD	H. Position V. Position		Adjust OSD frame horizontal location, press “UP” key to shift frame right, “DOWN” key to shift frame left , timeout and preset OSD. Adjust OSD frame vertical location, press “UP” key to shift frame upward, “UP” key to shift frame downward , timeout and preset OSD.

		OSD Timeout Exit		
	Language	English French German Italian		Press “UP” or “DOWN” to choose any one of the following languages , English , French , Germany , Italian , Spanish , Russian , Traditional Chinese and Simplified Chinese.
		Spanish Russian T. Chinese S. Chinese		
	Recall	Color Recall Recall All Exit		Recall the default value.
	Miscellaneous	Sharpness Display Information Exit		Press “UP” key to increase sharpness, “DOWN” key to decrease sharpness.
	Exit			

Control Buttons



Auto Adjusting	a.) Pressing to execute AUTO-Adjusting function. This function will set the monitor display area to the optimal position. b.) Sometimes this function can't achieve the optimal effects. Please follow the manual adjusting procedure.
Menu	When the light bar move other item, the key are used to select it, and read to adjust. Press the MENU key to activate the On Screen Display (OSD). Press twice to turn off the OSD. After 30 sec idle time, the OSD screen will automatically turn off.
Power	Use the power switch to turn the power ON or OFF. We recommend to turn your system power on first, then the LCD monitor.
Up	a.) When OSD mode is activated (When "MENU" key is pressed). The two keys are used to select the adjustment items.
Down	b.) When adjustment item is selected, the two keys are defined to decrease or increase the value of each selected item.

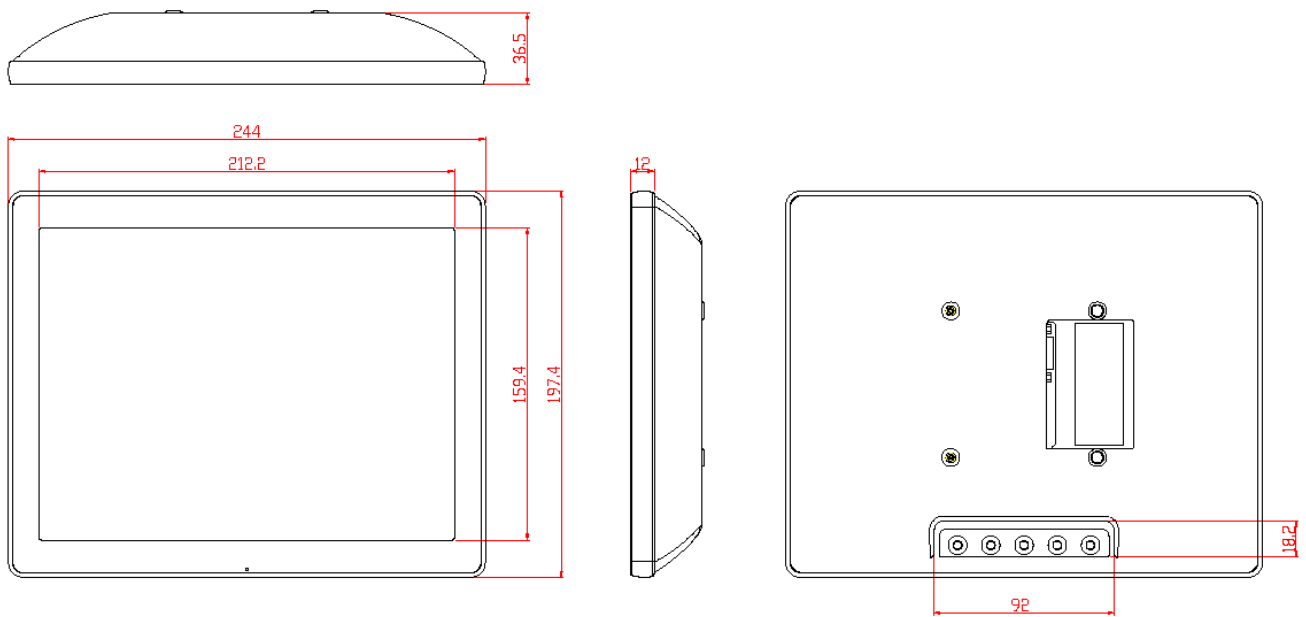
IV. For your safety

1. When move the monitor, always switch off power and disconnect all cables to avoid any danger.
2. Please use the power and signal cables correctly when install or bend it.
3. In case of notice any abnormal smell or noise, please stop operation and call the nearest dealer or service center.

V. Support timing chart

Timing Mode	Reference Standard	Resolution	Pixel MHz	FH KHz	FV Hz	Interlace	H Polarity	V Polarity
Mode 1	VESA	800×600	36.000	35.156	56.250	NO	+	+
Mode 2	VESA	800×600	40.000	37.879	60.317	NO	+	+
Mode 3	VESA	800×600	50.000	48.077	72.188	NO	+	+

VI. Mechanical dimension



VII. Product General Specification

Model	Monitor	Monitor with stand	Touch Monitor	Touch Monitor with stand
Cabinet color	Black			
Display size	10.4"			
Active Area	211.2 * 158.4 mm			
Optimal Resolution	800 * 600			
Color Arrangement	RGB-stripe			
Brightness	300 cd/m² (typ)			
Contrast Ratio	500:1			
Response Time	30 ms (typ)			
Viewing Angle	150 degrees (H) 110 degrees (V)			
Input Video Format	VGA			
Touch Panel	NA		5 Wires TWN Resistive	
Input Video signal connector	Mini DIN 8 pins			
Power consumption	6W		7W	
Input Frequency	Horizontal : 31.5 kHz~60.2 kHz Vertical : 56.3Hz~75Hz			
Power supply	DC 12V +/- 10%			
Temperature	Operating : 0℃~40℃ Storage : -10℃~50℃			
Humidity	Operating : 20%~80% Storage : 10%~90%			
Weight	0.9kg(net)	1.3kg(net)	1.1kg(net)	1.7kg(net)
Approvals	CE, FCC			
Wall Mount	VESA 75 * 75 mm			